



Survey Report Pilot Area #1

Harvey Park

Prepared By:
Jessica Aurora Ugarte
Historic Denver, Inc.
1420 Ogden Street, #202
Denver, CO 80218

Rev. November 24, 2014

With Support From:



DENVER
THE MILE HIGH CITY



HISTORY *Colorado*
STATE HISTORICAL FUND

Contents

Introduction	4
Funding Acknowledgement	4
Project Area	5
Research Design & Methods.....	6
Historic Context	8
Context, Theme and Property Type.....	22
Bibliography	23
Results.....	24
Data.....	24
Residential Building Types	26
Ranch.....	26
Split-Level.....	26
Bi-Level.....	27
A-Frame.....	27
Residential Building Styles	28
Contemporary.....	28
Ranch.....	29
Raised Ranch.....	29
Recommendations	30
Survey Log Key – Potential Local Eligibility	35
Survey Log.....	36

Introduction

Historic Denver, Inc. in collaboration with the City and County of Denver and the State Historical Fund, created Discover Denver, a multi-year project to develop a comprehensive inventory of Denver's historic and architecturally significant resources. This project utilizes advanced technology (developed by the City of Los Angeles) to accelerate the pace of historic survey and improve the consistency of data collection using the National Park Service's Multiple Property Documentation approach and the Historic Context Statement framework.

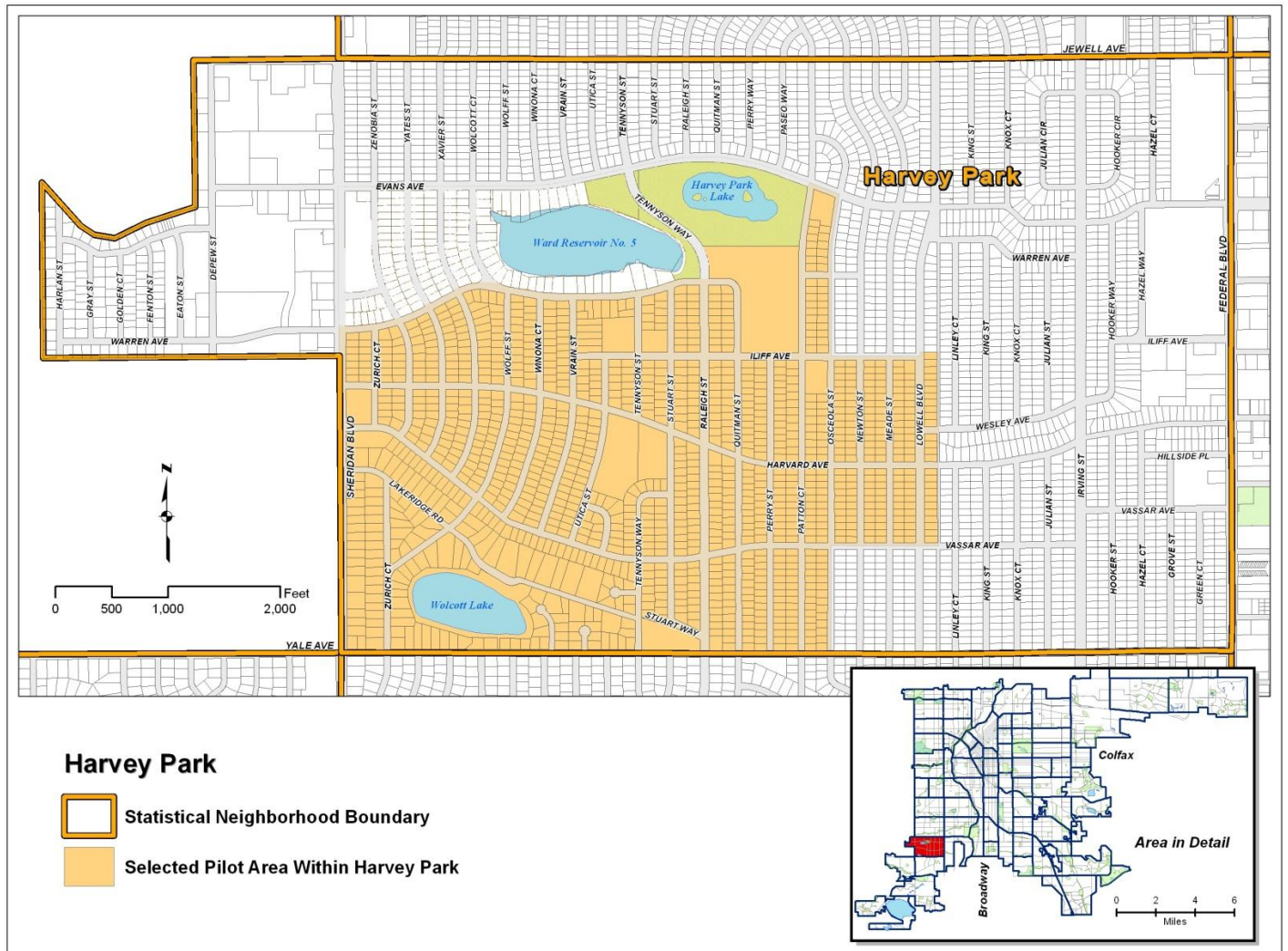
Denver covers a land area of 154 square miles and contains approximately 161,000 primary buildings. Fewer than 5% of these buildings have ever been surveyed for historic and architectural significance. Annually, the City and County of Denver receives and approves approximately 500 demolition permits, and that number is growing as development pressures mount in core cities across the US. Consequently, Denver is at risk of losing many properties that tell the story of our city's evolution and the people, events, ethnic and cultural heritages and architectural styles that make Denver a special and interesting place to live. Recent studies show that economic development occurs in historic districts at seven times the rate of other areas. According to the publication, "The Economic Power of Heritage and Place," investment in historic resources creates jobs, attracts businesses and generates income from consumer visitation and spending. Discover Denver's purpose is to identify those special places in our community where restoration and investment will preserve our city's unique identity and promote quality of life for generations to come.

Funding Acknowledgement

This project is made possible by funding from State Historical Fund grants from History Colorado (formerly known as the Colorado Historical Society) in addition to funding from the National Trust for Historic Preservation (Partners in the Field program), the City and County of Denver, and Historic Denver, Inc.

Project Area

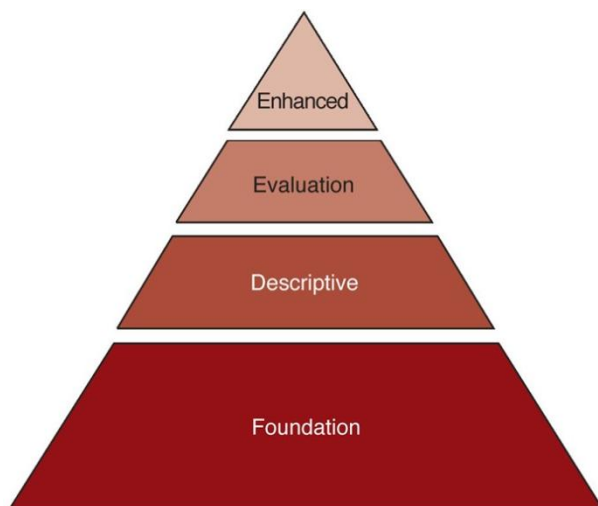
The Harvey Park Pilot area is located in southwest Denver, approximately eight miles from the city's downtown. The survey area is bordered by Yale Avenue, Sheridan Boulevard, West Warren Avenue, South Quitman Street, West Iliff Avenue, the alley between South Lowell Boulevard and South Linley Court, West Vassar Avenue, and South Osceola Street.



Research Design & Methods

During Discover Denver's initial investigative phase (2010-2011), staff from Historic Denver, Inc., the City and County of Denver and the State Office of Historic Preservation worked with consultants and community stakeholders to develop the methodology and funding plan for the program. The document entitled, "Denver Historic Survey: Citywide Survey Strategy," details the project background and methodology to be employed. Through this analysis, it was decided that Discover Denver would employ advanced technology which was developed by the City of Los Angeles to conduct their own citywide survey, currently in its third year.

In 2012 planning for the Discover Denver Pilot Program, which is headed by Historic Denver, Inc. in partnership with the City and County of Denver, began. In Fall of 2013, the Discover Denver program publically launched the Pilot Program, promoting the survey activities through a wide variety of media and promotion outlets. The Discover Denver pilot phase will survey several areas which are representative of three distinct survey themes, covering approximately 4,000 individual properties. During this phase, staff and consultants will develop a database, test the FiGSS software and identify and work out flaws in the methodology and bugs in the technology.



Data gathered for Discover Denver falls under four categories: Foundation; Descriptive; Evaluation; and Enhanced.

The Foundation level consists of 100% of the buildings located in Denver. Using information from the City and County of Denver's electronic property records, every structure's physical location, year built, and use are available.

The Descriptive level is completed for all properties that are 30 years of age or older, regardless of their physical historic integrity. During the Pilot of Discover Denver, trained volunteers used convertible laptop computers to record a building's physical characteristics such as style, materials, and architectural features. One to three photographs were also taken of each property during this level, for inclusion in the survey record. It is estimated that citywide, approximately 85% of all Denver properties will reach this level.

Only properties that are 30 years of age or older, which retain their physical, historic integrity, are assessed during the Evaluation level. The Evaluation level assesses each property on how it relates to broad historic contexts that tell the history of Denver's development. During Evaluation, each property is assigned a proprietary code that indicates whether or not the property is potentially eligible for listing as an individual Denver Landmark or as a part of a Denver Historic Landmark District. These determinations are made by staff at the City and County of Denver's Landmark Preservation Department, and are intended to be an informational tool for city staff, property owners, and developers. Evaluations of potential eligibility or non-eligibility are subject to revision should additional information be discovered in the future, or if the property loses its physical historic integrity. It is estimated that citywide, approximately 35% of all Denver properties will reach this level.

A small percentage of surveyed properties will be assessed at the Enhanced level. Properties that are evaluated at the Enhanced level will have additional research completed to discover if there is evidence of historic persons or events that may make the structure historically significant. Each property that moves to the Enhanced level will have a state-standard 1403 Architectural Inventory Form completed, which includes additional information such as the history of the structure and its residents, background on the local neighborhood, and any relation to broader historic subjects within the city, state, or nation. It is estimated that citywide, less than 5% of all Denver properties will reach this level.

Retooling Denver for the Modern Age – 1945-1982

Suburban Development

At the close of World War II observers described Denver as a “reluctant capital city;” one that was undoubtedly large, but was also “impassive and inert...isolated.”¹ By the 1940s growth and modernization of the Queen City of the Plains had fallen behind that of other western cities such as Seattle and Los Angeles. An older generation, descended from the pioneers and investors that had facilitated Denver’s mining boom, led the city; yet they were largely dedicated to the status quo, rejecting the risks associated with large-scale development and the hardships of the Great Depression. Historian Thomas Noel wrote that Denver “seemed to be resting, reflecting on the past rather than betting on the future.”² Between the years 1945 and 1982, this quiet city experienced an immense transformation into a modern, suburban metropolis.

By 1940, the greater metropolitan Denver area was already home to a large federal presence, including a U.S. Mint and three military installations.³ The Rocky Mountain Arsenal, a 27-square-mile plant northeast of Denver, began operating in 1942, producing chlorine, napalm, bombs, and other defense munitions. Another large plant that provided wartime munitions was Dow Chemical’s Rocky Flats, opened in northwest Denver in 1951. This military presence had the effect of bringing employment, and similarly housing development, to unincorporated and undeveloped areas surrounding the city. This activity helped to contribute to Denver’s postwar growth, which was twice the national average.⁴

¹ Stephen J. Leonard and Thomas J. Noel, Denver: *Mining Camp to Metropolis* (Niwot, CO: University Press of Colorado, 1990), 235.

² *Ibid.*, 237.

³ Bunyak Research Associates and Front Range Research Associates, Inc., “Denver Area Post-World War II Suburbs,” National Register of Historic Places Documentation Form (April 2011), 10.

⁴ “Denver Area Post-World War II Suburbs,” 54.

The Effects of World War II on Residential Housing

When World War II came to an end in 1945, the United States faced a major housing shortage. Millions of veterans and their growing families needed places of their own to settle in. The housing industry in Denver had remained sluggish since the beginning of the Depression, with fewer than 6,000 single-family homes built during the 1930s. During that same decade, however, the population in the city had grown by over 34,000.⁵ Two significant legislative acts would play a part in making the postwar housing boom possible, remedying the nationwide incongruity between the number of houses being built and the large number of people moving into major cities.

While returning war-time veterans would highlight the lack of housing, the issue was first addressed during the Great Depression. In 1934 the National Housing Act was passed, which included the creation of the Federal Housing Administration (FHA). The FHA laid the groundwork for widespread home ownership across the country by providing federally insured loans for banks and other lenders to offer for home building. It provided the means to offer mortgages to homeowners for 80-90% of their property value. This allowed for a reasonable down payment, and monthly mortgage payments that could be paid over a period of years. The FHA also developed mandatory housing standards for single-family homes, rentals, and planned subdivisions, ensuring that development using these federally-backed funds would be of a consistently high quality.

The Serviceman's Readjustment Act, also known as the G.I. Bill, was passed in 1944. The G.I. Bill provided returning service members with benefits such as low-interest loans to start businesses, tuition assistance, and, perhaps most importantly, access to low-cost mortgages. Home ownership by veterans was promoted by eliminating down payments and making mortgages more

⁵ Ken Schroepfel, denverurbanism.com. "Denver's Single-Family Homes by Decade: 1930s," posted April 29, 2012. <http://denverurbanism.com/2012/04/denvers-single-family-homes-by-decade-1930s.html>.

affordable.⁶ With the large-scale return of veterans who were ready and able to move out of cramped urban apartments in favor of buying their own single-family homes, local developers and builders had the tools that they needed to start a new housing boom.

Nationwide Postwar Housing Trends

The development of postwar suburbs across the nation followed similar patterns that created the image and culture of what we now consider the modern subdivision. Suburban development flourished in locations just outside of cities, where the now-obsolete war industry tools were turned to the task of creating modern and mass-produced goods and services for the newly wealthy middle class. This also allowed for the mass production of homes, the speed and economy of which would help to rapidly turn large tracts of undeveloped farmland into new suburban communities. Subdivisions were planned with families in mind, with many including space for parks, churches, schools, and recreational centers. Amenities such as these became an important part of the suburban home and its focus on personal leisure and convenience. With these amenities, developers were selling not only homes for families to live in, but also a lifestyle that offered a closeness to nature that had not previously been available in the city.

The modern suburb can be characterized by a changed form that followed the FHA's new standards for neighborhood planning. Before the FHA guidelines, city neighborhoods had typically been designed with small, rectilinear plots along established street grids; it was generally rare for an urban neighborhood to stray from this defined plan. Post-FHA, best-practice standards were set that sought to create a safe and inviting environment, which would include such features as increasing the width of streets, creating longer blocks, providing for larger lot sizes, and an emphasis on developing

⁶ Kenneth T. Jackson, *Crabgrass Frontier: The Suburbanization of the United States* (Oxford: Oxford University Press, 1985), 204.

streets that followed the natural environment rather than a precise grid.⁷ This disregard of the grid would be one of the most significant character changes of the postwar suburbs. The often rambling, curvilinear roads discouraged high-speed traffic through neighborhoods, decreased hazardous intersections, created a unique, almost pastoral setting, and were well-suited for the uneven land that was often located outside of the urban core.

In the urban downtowns of cities across the nation, privacy of space was a luxury that could not be afforded by most citizens. Unlike older city-center developments, the FHA regulated that lot sizes in the new suburban developments be at least fifty feet wide. This allowed sunlight to reach both the inside of the house and the ample backyard.⁸ These larger lot sizes also meant that more families would have space to have a garden, play, or just enjoy the clean air that was a benefit of living miles away from the bustle of downtown.

The merchant builder and developer would end up playing a pivotal role in the rapid construction of suburban homes. Prior to federally backed loans, a significant amount of up-front capital was required for a builder to develop a large tract of land. During World War II, the federal government had provided loans and other financial incentives for private contractors who could build emergency military housing and production facilities. The success of these programs showed that rapid building on a large scale, using current mass production technologies and fabrication systems, was possible. After the war, builders shifted their focus to single-family, residential homes that would meet the need of returning veterans. One of the first contractors who took advantage of this new, nationwide housing market was Abraham Levitt. Levitt was able to rapidly build large residential subdivisions by taking the components of mass production technology, including assembly line-type construction and prefabricated materials, and applying them to housing construction. These tactics enabled him to develop multiple subdivisions around New York and New Jersey that came to be

⁷ “Denver Area Post-World War II Suburbs,” 130.

⁸ *Ibid.*, 131.

known as “Levittowns.” In the late 1940s, these were considered the first modern suburbs in the country and countless builders modeled their process after Levitt.

Racial Discrimination in Postwar Housing

Although there were many benefits to suburbanization for the new middle class, there were also negative consequences for urban areas and city-center residents. One downside of the Federal Housing Administration during the postwar period was its primary focus on suburban development. Instead of equally insuring urban and suburban mortgages for single family homes, the FHA disqualified entire urban areas for home loans. These urban areas were typically where minority citizens made their homes, and so compounded the already unequal opportunities for minorities to participate in home ownership. This institutionalized federal resistance to backing inner-city home mortgages resulted in the decreasing value and deterioration of the urban environment.⁹ Additionally, “white flight” out of downtown areas resulted in decreasing tax income for the urban core, further exacerbating the inequality caused by increasingly segregated housing opportunities.

Even though racial discrimination in housing had been struck down by the Supreme Court in 1948, its effects would continue far into the postwar period. Many real estate brokers refused to show minorities homes in white neighborhoods, and other unspoken restrictions of segregation were clandestinely followed.¹⁰ This then had the effect of reinforcing the idea that the suburbs were an escape from the crime and poverty of the city, but only if those inner-city undesirables were not permitted to follow. In fact, the New York suburb of Levittown set the atmosphere for postwar segregation as it openly refused to sell to African-Americans for twenty years following its development.¹¹ Limited opportunities for home ownership, employment, and fair compensation were

⁹ *Crabgrass*, 213.

¹⁰ *Denver: Mining Camp to Metropolis*, 374.

¹¹ *Crabgrass*, 241.

suffered by African Americans and other minorities after the war. So not only did suburbanization physically produce segregated communities, but it helped to manifest and further reinforce the cultural separation of race and class in all aspects of life.

Suburban Schools

The housing shortage of the 1930s and 1940s was followed by a shortage of schools as the rapid and large-scale transference of families to the newly developed suburbs was faster than the educational systems could be put into place. During World War II, only one new school was built in Denver despite the large numbers of families that moved to the area to work at military installations. Because of the lack of new school development and booming population, postwar schools operated at beyond full capacity, often with two or three schedules of students, everyday. Denver Public Schools estimated that the city gained 3,000 to 4,000 children every year throughout the 1950s.¹² This continued rapid growth meant that there was an immediate need for amenities, such as schools, that the city would struggle to provide throughout the 1950s.

Architectural design of schools during this postwar time was strictly regulated by design guidelines. This resulted in educational facilities built during this period having a uniform appearance. They were typically designed in the International style, incorporating modern features such as a low, horizontal façade, flat roofs, stacked windows, and modern materials such as steel, aluminum, and concrete. Schools during this time were built with utility in mind, with linear plans, multi-use rooms such as cafeteria/gymnasiums, and windows placed so as to take maximum advantage of daylight.¹³

¹² “Denver Area Post-World War II Suburbs,” 80.

¹³ “Denver Area Post-World War II Suburbs,” 81.

The Impact of the Automobile

A renewed middle class, bolstered by the booming postwar economy, meant that even a family of modest means could live in their own suburban dream home. Because these new suburban developments were typically outside of local transit lines, the personal automobile would become essential to the new suburban population. This suburbanization had the result of prioritizing more local road construction, which was aided by the National Interstate and Defense Highway Act of 1956. This provided funds for the construction of 41,000 miles of highway, providing for the newly mobile middle class a way to travel easily between work and home.¹⁴ The need for, and prevalence of, cars in this economy would create a renewed focus on the garage as a vital part of any well-equipped suburban home. By 1960 the garage typically made up approximately one-third of the home's floor plan, becoming a focus of the structure's design.

Americans would quickly become dependent on the newly affordable and accessible automobile, resulting in personal vehicles shaping the modern city through the renewed emphasis of a car culture. This would include new automotive-centric leisure activities such as drive-in movie theaters and fast food stands. Denver was quick to adopt these trends, with new businesses like the first A&W Root Beer Stand, opened in 1952, which was complete with carhops who served patrons in their cars.¹⁵

Shopping centers and malls were another result of the built environment being influenced by societal trends. In 1946 there were few shopping center-type structures throughout the United States, and these were generally located in areas that were away from the downtown core. By the mid-1950s, as times and taste changed, the increasingly popular open-air shopping centers would be joined by enclosed malls. These retail complexes, often far removed from the city center and accessible only by car, would begin to be the norm for what was expected by the mobile public.

¹⁴ "Denver Area Post-World War II Suburbs," 249.

¹⁵ *Mining Camp to Metropolis*, 268.

Suburban shopping centers encompassed three types: the strip mall, which was smallest in scale with a few stores that served local needs; the community center, with twenty to forty stores which provided for a variety of needs; and regional centers, which had fifty to one hundred stores, were fully enclosed, and served a large number of consumers.¹⁶ Each type of shopping center required appropriate parking lots, further shaping postwar development to suit the steadily increasing number of automobiles. Over time during the 1950s through 1980s, central business districts within dense downtowns would slowly be abandoned in favor of suburban retail development which was more accessible to growing middle and upper-class communities.

In the postwar period, retail centers such as shopping centers and malls became essential to the planning of subdivisions. Because of their car-centric design, these shopping centers would quickly become the preferred place for the newly mobile middle class to go shopping.

The growth in popularity of shopping centers and malls was also stimulated by tax incentives that made commercial development highly profitable. By the 1970s large mega-malls would serve most major suburban regions, becoming gathering places for the community. This model of retail development would prove so successful that by 1984 there were approximately 20,000 shopping centers and malls throughout the nation.¹⁷ These far-flung retail centers were in direct opposition to the prevailing image of the dense inner city; the safely enclosed mall created an environment that catered entirely to the middle class, with none of the undesirable elements of the downtown urban community.¹⁸

¹⁶ “Denver Area Post-World War II Suburbs,” 43.

¹⁷ *Ibid.*, 259.

¹⁸ *Crabgrass Frontier*, 260.

Postwar Residential Housing Styles

The modern concepts of leisure and privacy in a residence became part of a larger cultural movement – the ability to buy the "American Dream" through the purchase of a suburban home. Suburban development and the mass production of homes resulted in similar architectural styles across the country. Departing from pre-war styles that emphasized historic styles and ornamentation, the period from 1945 to 1965 brought focus on innovative, modern designs. One of the first postwar styles to emerge in the 1940s was the Minimal Traditional style. Minimal Traditional-style homes had a simplified form, and typically featured a low roof slope, were of a single story, and often had a small, gabled front porch.

The Ranch form would become the most prevalent housing style during the postwar period. In the 1930s, California architect Cliff May designed a home that pulled elements from the Spanish Colonial homes of the American Southwest and combined them with modern Craftsman and Prairie-style homes of the twentieth century. May then oriented the new Ranch house towards a private outdoor area or patio that provided a secluded space for the resident to connect with nature.¹⁹ He was inventive with his design, moving the garage from the back of the house to the front as an attached or detached carport, allowing the backyard to be given over fully to the family.²⁰ Other Ranch forms would follow, which would keep a similar design aesthetic to May's style, but modified for local tastes and resources.

In addition to his more basic Ranch forms, Cliff May designed Contemporary-style homes that would be constructed in several cities across the nation, including Denver. The homes featured a Ranch silhouette, but with modern influences using glass walls, steel, concrete, and cantilevered

¹⁹ Virginia and Lee McAlester, *A Field Guide to American Homes* (New York: Alfred A. Knopf, 1993), 479.

²⁰ "Denver Area Post-World War II Suburbs," 106.

roofs.²¹ The glass curtain walls and large windows incorporated outdoor space into indoor space. Other components of the Contemporary style included masonry fireplace walls, patios, carports, and sliding glass doors. Contemporary homes were unique in their combination of the Ranch's southwestern concepts of leisure and oneness with the landscape and the modern concepts of austerity and minimalism. While Cliff May would be known for his development of the "California Contemporary" style, other builders would take his design aesthetic and build similarly-styled homes in their local communities.

Ranch homes were generally built on the larger plots of land that were typical of modern suburban developments, which had plenty of room for the horizontal massing of the structure while still leaving space for backyards and courtyards. The Ranch style would separate the areas of living space, creating spacious and open front areas for gathering as a family or with guests and private bedrooms beyond. The Ranch gained popularity because of its modern sensibilities, ease of construction, and functionality which were combined with the romance of an easy California lifestyle. Veterans and their families would purchase them in every region of the country, including in Denver.

A new building form, the Split-Level, provided more space for growing families. The bedrooms were located on the upper floor, the family room on the half-story below, and a leisure room was on the lowest level. Related in form was the Bi-Level, which was not as popular as the Split-Level. The Bi-Level was characterized by a two story form that had its entrance located mid-way between the first and second levels. Upon entering, there was a choice of going down a short flight of stairs to the lower level – which would often include a family room and bedrooms – or up a short flight of stairs to the upper level – which would often include the living room, kitchen, and other bedrooms. This separation of spaces found in both the Split-Level and Bi-Level attracted growing modern families, and the Split-Level would end up being a dominant building type through the 1960s.

²¹ Linda Flint McClelland, David L. Ames, and Sarah Dillard Pope, "Historic Residential Suburbs in the United States, 1830-1960," National Register of Historic Places Registration Form (September 2002), 35.

Although the Ranch continued to be the dominant style in suburban America, the mid-1960s generated an interest in suburban architecture which would again refer back to historical precedence. The Mansard style, which reflected the Second Empire style of the mid-to-late nineteenth century, became popular in the 1960s. Its flat-topped, sloping and shingled mansard roof was a distinct feature that was used on diverse properties such as suburban homes, apartment buildings and commercial structures. Neo-colonial homes, with their emphasis on the use of features from historic architectural styles, also became fashionable during this time. The Cape Cod became one of the most fashionable colonial-inspired styles in the postwar period. Another design, Neo-Tudor, became popular by the 1970s, with its loose interpretation of the Medieval English style with steeply-pitched gables and half-timbered ornamentation. These types of “revival” architectural styles would continue to gain popularity in suburban neighborhoods, influencing the design aesthetic of suburbs developed in the late twenty-first century.

Postwar Suburban Development in Denver

In Denver, one of the first new, postwar suburban neighborhoods to be built was Chaffee Park, developed in the late 1940s. Located in the northern portion of the city, this 30-acre neighborhood broke from typical historic urban neighborhood patterns by planning curvilinear streets and including a public park. Chaffee Park’s first school, Remington Elementary, was built in 1955, long after many families had moved into the subdivision. Chaffee Park featured many of the architectural styles that were popular immediately following World War II, such as Minimal Traditional and Cape Cod-styled homes.²²

Athmar Park, a neighborhood located in western Denver, experienced considerable growth and development during the 1950s. Platted in 1949, the subdivision was planned by Thomas and

²² “Denver Area Post-World War II Suburbs,” 162.

John McCusker, who named it Athmar after their wives Athena and Mary.²³ The neighborhood had 40 acres dedicated to parks, and sat just west of the South Platte River. Perl-Mack, one of the largest home builders in the country, built 150 homes in Athmar Park in 1955, all of which sold within a month.²⁴ An interesting postwar quality still marks the homes of Athmar Park, as many of the homes retain their original windowless basements that had been advertised as fallout shelters. The Cold War had sparked fears of nuclear warfare, and many homeowners had contractors build shelters in the basement to provide a sense of security.

As Denver continued to grow over the postwar era, subdivisions continued to expand across the city. Higgins-Kassler (1945), Crestmoor Park (1936, 1946), Burns Heights (1947), Burns Montview Addition (1947), Southern Hills (1948), Belcaro Park (1931, 1948) and University Hills (1949) were Denver's earliest postwar developments. In 1950, University Park was awarded second place in the National Association of Home Builders contest for the construction of economy home developments over fifty units.²⁵ A number of Denver developments, including Monaco Gardens, Mar-lee Manor, Wilshire Hills, Virginia Village, Honeymoon Manor, Monaco Gardens and Gunnison Heights were developed in 1950. Cherry Hills Vista was developed in southeast Denver by D.C. Burns Realty & Trust in 1951. Krisana Park, developed in 1953, offered seven home designs inspired by the architect Joseph Eichler. Later developments included Winston Downs (1955), Lynwood (1955), Virginia Vale (1956), Belmont Heights (1956), Bear Valley (1961), Pinehurst Estates (1962), Hutchinson Hills (1962) and Hampden Heights (1962).

The Development of Harvey Park

²³ Catlett, *Farmlands*, 90.

²⁴ "Denver Area Post-World War II Suburbs," 122.

²⁵ *New York Times*, February 1, 1950.

The southwestern Denver neighborhood of Harvey Park would follow the common patterns of suburbanization that were seen in other parts of the country. The land that is now Harvey Park was originally 160 acres of ranch land located eight miles southwest of downtown Denver. Paul Whiteman, a well-known jazz musician in the 1920s and 1930s bought the land and named it “Whiteman’s Black and White Ranch.” The Ranch would be sold twice between 1925 and 1948. Finally, in 1948, Arthur “Tex” Harvey, a successful oilman, purchased the Black and White Ranch, along with 320 acres of Arapahoe County, for \$158,000. Two years later Harvey purchased an additional 160 acres, which included most of the Lakeridge subdivision, for \$80,000. Following WWII, Harvey sold 318 acres to Aksel Nielsen of Mortgage Investments Company for \$30 million. Mortgage Investments Company planned a 1,662 home subdivision to be called Harvey Park.

Homeowners in Harvey Park petitioned the city of Denver for annexation in March of 1953. In October of 1954, the first families were moving into their new homes in Harvey Park. The streets were unpaved, and there was no telephone or bus service that far outside of the city at that time. These new owners were primarily young servicemen and their families who were able to purchase their homes thanks to the GI Bill, which had no down-payment requirements. Harvey Park was turning into a highly sought after middle-class neighborhood with schools, lakes, a recreation center, parks, churches, and a shopping center all within its boundaries.

After the Harvey Park neighborhood was formally annexed by Denver in March of 1954, the new neighborhood became known for its popular housing options. In the mid-1950s contractor Lou Carey would build an additional 200 Harvey Park homes in a Contemporary style, while another early builder, K.C. Ensor, would build fifty brick homes. A builder named Thomas Hutchison would build a majority of the homes in Harvey Park between 1954 and 1958.

Because speed and cost of building were of high priority in Harvey Park, the developer also sought out prefabricated homes that the architect Cliff May had designed for use in California. May

and local designer Chris Choate created a low cost kit of parts that were shipped by truck to the building site in Harvey Park.

Non-residential development in the Harvey Park neighborhood followed patterns that were seen across the country in postwar suburbs. Schools in Harvey Park were built after many residents had moved into their new homes. Doull Elementary School was only ready for local students in 1956, a full two years after the first residents moved into their new Harvey Park homes.²⁶ Even more delayed, Abraham Lincoln High School was not built until 1960. During this period one of the largest shopping centers in the Denver area, opening in 1958, was the 350,000 square foot Bear Valley Shopping Center. This center was located near the newly built South Harvey Park neighborhood, and was an integral part of the new neighborhood's draw.²⁷

Summary

During the period between 1945 and 1982 Denver would emerge as a vital, central metropolis, providing a transportation and financial hub for the western United States. The robust industry, dynamic upward population trends, and booming development of the Mile High City would epitomize the spirit of the swiftly growing nation's entrance to the modern age. Suburbanization, and the revolutionary societal trends that went along with it, would remain one of the most prominent features of the postwar period, speaking volumes about the cultural and economic shifts that created this modern city.

²⁶ Sharon R. Catlett, *Farmlands, Forts, and Country Life: The Story of Southwest Denver* (Boulder: Big Earth Publishing, 2007), 162.

²⁷ "Denver Area Post-World War II Suburbs," 85.

Context, Theme and Property Type

CONTEXT:

Retooling Denver for the Modern Age – 1945-1982

THEME:

Post-World War II Residential Subdivisions

PERIOD OF SIGNIFICANCE:

1945-1965

ELIGIBILITY STANDARDS:

- Retains the essential character defining features of homes built in this development.
- Retains sufficient historic integrity to serve as a good example of post-World War II-built housing.
- Was constructed during the period of significance, 1945-1965.

INTEGRITY CONSIDERATIONS:

- Location and setting should be unchanged
- House retains residential use
- Landscaping may be altered, including fence replacement, if original fence footprint appear to have been followed or has had minimal deviation.
- Replacement of some windows and doors is acceptable if the openings have not been resized and original fenestration has not been disrupted, and if replacement doors and windows are stylistically sympathetic to the original modern style of the house.
- Original footprint and rooflines of house have been maintained, with no dominant or pop-top additions.
- The addition of security features such as security doors is acceptable.
- Conversion of original carports to garages should be sympathetic to the design of the house.
- Should retain most other aspects of integrity of Design, Materials, Workmanship and Feeling

PROPERTY TYPE:

Residential, single family home

Bibliography

- Architects' Small House Service Bureau. *How to Plan, Finance and Build Your Home*. Denver, CO: Mountain Division of the Architects' Small House Service Bureau, 1922.
- Architects' Small House Service Bureau, *How to Plan, Finance and Build Your Home*. New Orleans, LA: Southern Pine Building Association of the Architects' Small House Service Bureau, 1920.
- Bunyak Research Associates and Front Range Research Associates, Inc, "Historic Residential Subdivisions of Metropolitan Denver, 1940-1965." National Register of Historic Places Multiple Property Documentation Form (April 2011).
http://www.nps.gov/nr/publications/sample_nominations/DenverSuburbsMPS.pdf.
- Catlett, Sharon R., *Farmlands, Forts, and Country Life: The Story of Southwest Denver*. Boulder, CO: Big Earth Publishing, 2007.
- Fisher, William E., Letter to Benjamin Betts, April 13, 1934. In *Fisher and Fisher Collection*, Denver Public Library Western History and Genealogy Division, Box 27, FF 30.
- Jackson, Kenneth T., *Crabgrass Frontier: The Suburbanization of the United States*. Oxford: Oxford University Press, 1985.
- Leonard, Stephen J. and Thomas J. Noel, Denver: *Mining Camp to Metropolis*. Niwot, CO: University Press of Colorado, 1990.
- Noel, Thomas and Barbara Norgren, *Denver: The City Beautiful and its Architects, 1893-1941*. Denver, CO: Historic Denver, Inc., 1987.
- McAlester, Virginia and Lee. *A Field Guide to American Homes*. New York: Alfred A. Knopf, 1993.
- McClelland, Linda Flint, David L. Ames, and Sarah Dillard Pope. "Historic Residential Suburbs in the United States, 1830-1960." National Register of Historic Places Multiple Property Documentation Form (September 2002),
http://www.kshs.org/resource/national_register/MPS/HistoricResidentialSuburbsintheUS1830-1960_MPDF.pdf.
- Schroepfel, Ken, "Denver's Single-Family Homes by Decade: 1930s." Denver Urbanism Blog, April 29, 2012, <http://denverurbanism.com/2012/04/denvers-single-family-homes-by-decade-1930s.html>
- Tucker, Lisa Marie. "The Small House Problem in the United States, 1918-1945: The American Institute of Architects and the Architects' Small House Service Bureau," *The Journal of Design History*, Vol. 23, No. 1 (2010): 43-59.

Results

Data

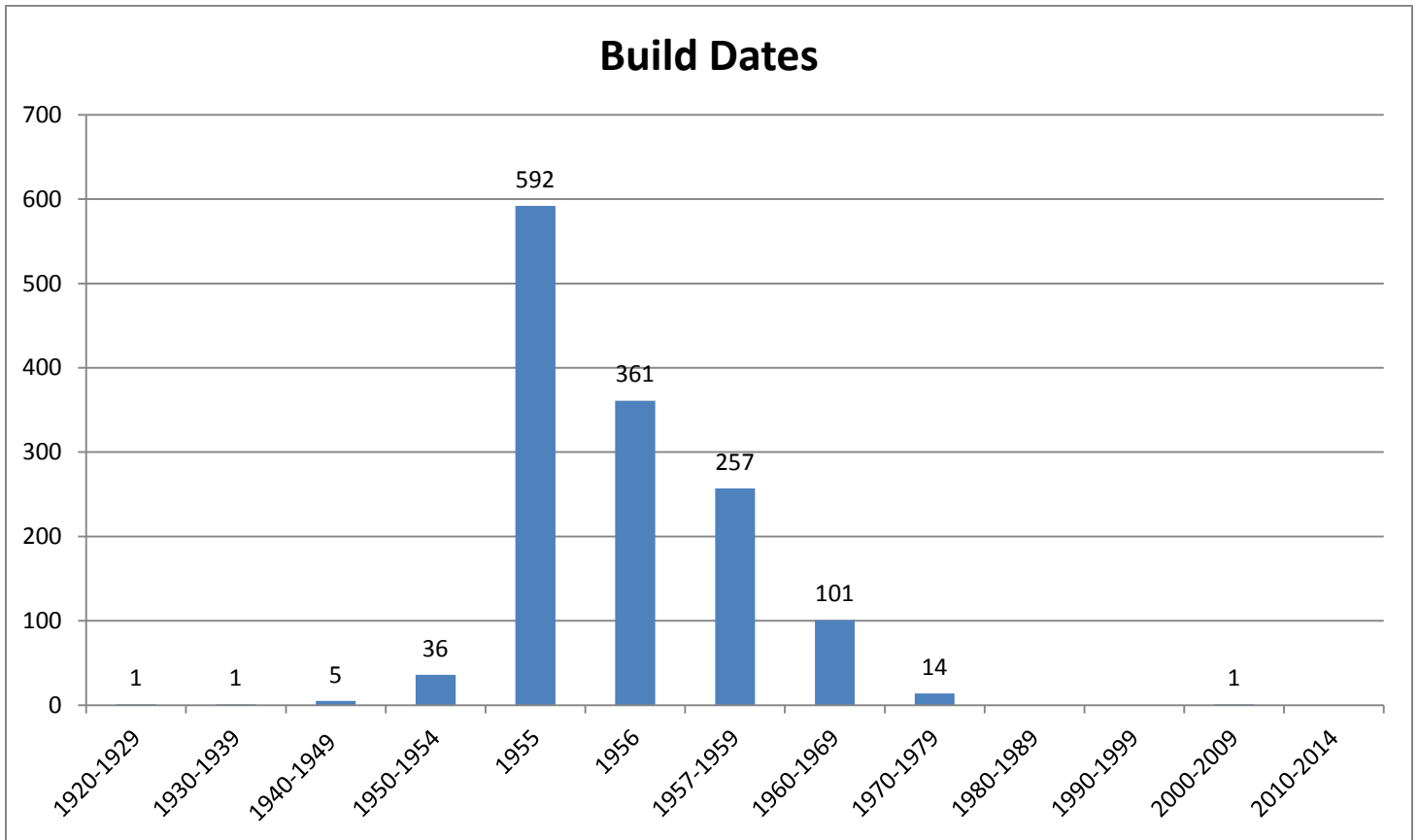
There are 1,369 structures within the designated survey area for the Harvey Park Pilot Area. Only 110 of the surveyed buildings have had major modifications that affect their historic physical integrity.

Survey Levels:

- 1 property was surveyed only at the Foundation Level (<1%)
- 1,368 properties were surveyed at the Descriptive Level (99.93%)
- 1,260 were surveyed at the Initial Historic Review Level (92.04%)
- 14 were surveyed at the Enhanced Level (1.02%)

Build Dates:

- 1 building was constructed less than 30 years ago.
- 36 buildings were constructed less than 50 years ago.
- 1,332 building were constructed over 50 years ago.



Property Types:

- Religious – Church = 6
- Commercial = 3
- Educational – School = 2
- Domestic – Single Dwelling = 1357
- Civic – Fire Station = 1

Building Types:

- Ranch = 1,136
- Split-Level = 153
- Bi-Level = 7
- A-Frame = 1
- Other = 72

Building Styles:

- Ranch = 497
- Raised Ranch = 337
- Contemporary = 319
- Modern Movement = 7
- Other = 209

Residential Building Types

Ranch

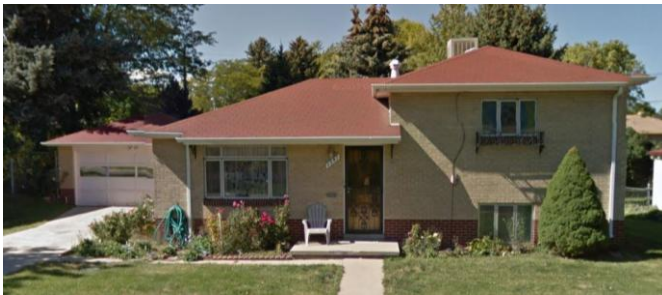


2546 S. Stuart Street - Ranch

Character Defining Features:

- Horizontal massing
- Asymmetrical façade
- Low-slope hipped or gabled roof
- Wide eaves
- Street-facing attached garage or carport, or detached garage offset behind the house
- Street-facing picture window
- Full or half-height brick cladding.

Split-Level



2587 S. Uno Way – Split-Level



2663 S. Osceola Street – Burns Modern Split-Level

Character Defining Features:

- Main level of house intersects with a two-level portion, of which the lowest level is partially below grade
- Entry on main level
- Hipped or gabled roof
- Wide eaves
- Attached garage or detached garage offset behind the house
- Street-facing picture window
- Upper level windows are centered or symmetrically placed
- Brick cladding

Bi-Level



4465 W. Yale Avenue – Bi-Level

Character Defining Features:

- Raised basement, with windows at or above grade
- Two stories tall
- Mid-level main entry, between the upper and lower floor

A-Frame



4555 W. Lakeridge Road – A-Frame

Character Defining Features:

- Steeply pitched front gable roof
- Roof eaves extend to grade
- Rectangular plan

Residential Building Styles

Contemporary



2261 S. Quitman – Carey Holiday Contemporary Ranch



2677 S. Osceola – Burns Modern Contemporary Ranch



2545 S. Lowell – Cliff May Contemporary Ranch

Character Defining Features:

- Horizontal massing
- Rectangular or L-Shaped plan
- Low slope front or side-gabled roof.
- Wide eaves, with exposed purlins at the gable ends
- Attached or detached carport
- Clerestory windows at gable ends
- Full-height glazing present
- Exterior, wide chimneys are common

Ranch



2546 S. Stuart Street – Ranch Style

Character Defining Features:

- Horizontal massing
- Asymmetrical façade
- Low-slope hipped or gabled roof
- Wide eaves
- Street-facing attached garage or carport, or detached garage offset behind the house
- Street-facing picture window
- Full or half-height brick cladding.

Raised Ranch



2531 S. Vrain Street – Raised Ranch Style

Character Defining Features:

- Asymmetrical façade
- Low-slope hipped roof
- Street-facing detached garage offset behind the house
- Basement level is partially above grade
- Entrance and main level are raised above the ground.
- Street-facing picture window
- Brick cladding

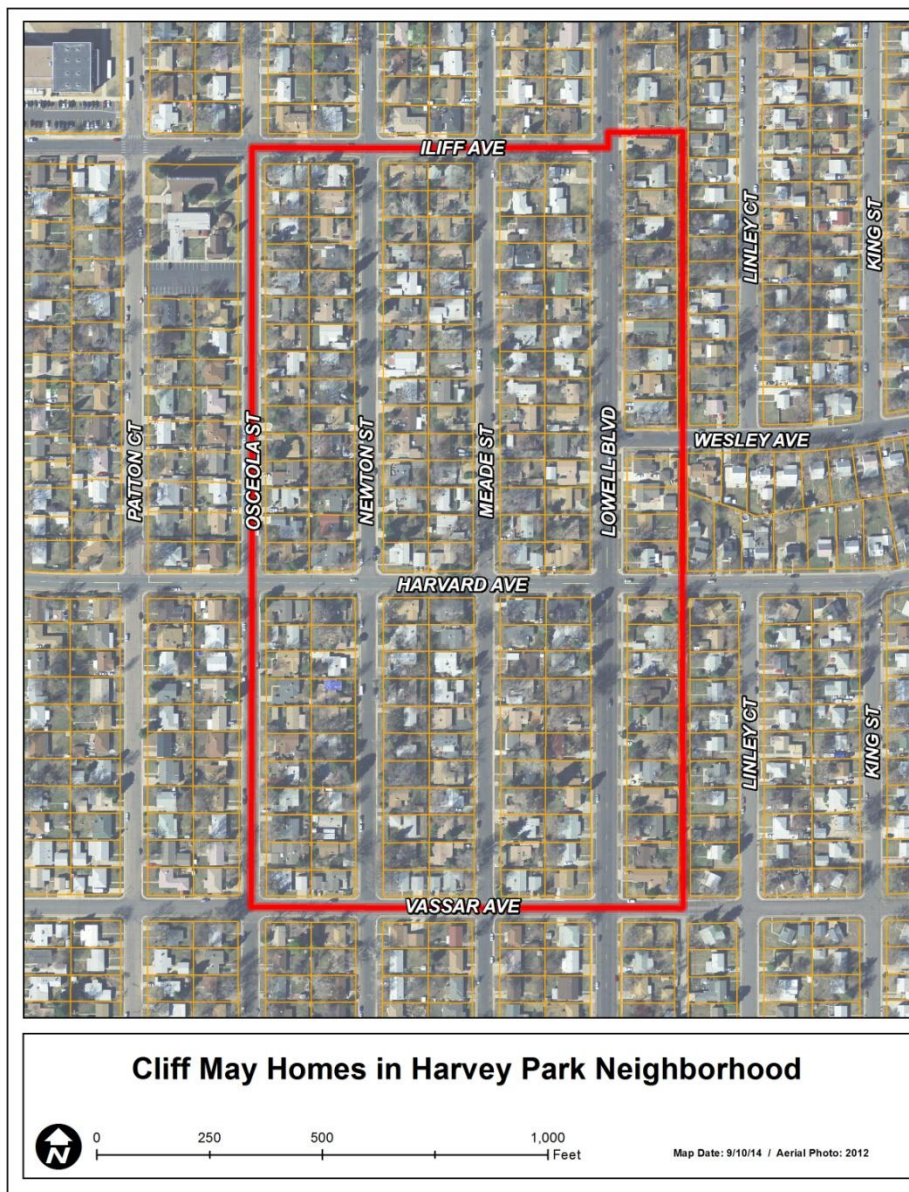
Recommendations

Evaluation for the Colorado State Register of Historic Properties and the National Register of Historic Places eligibility was not completed as a part of this survey.

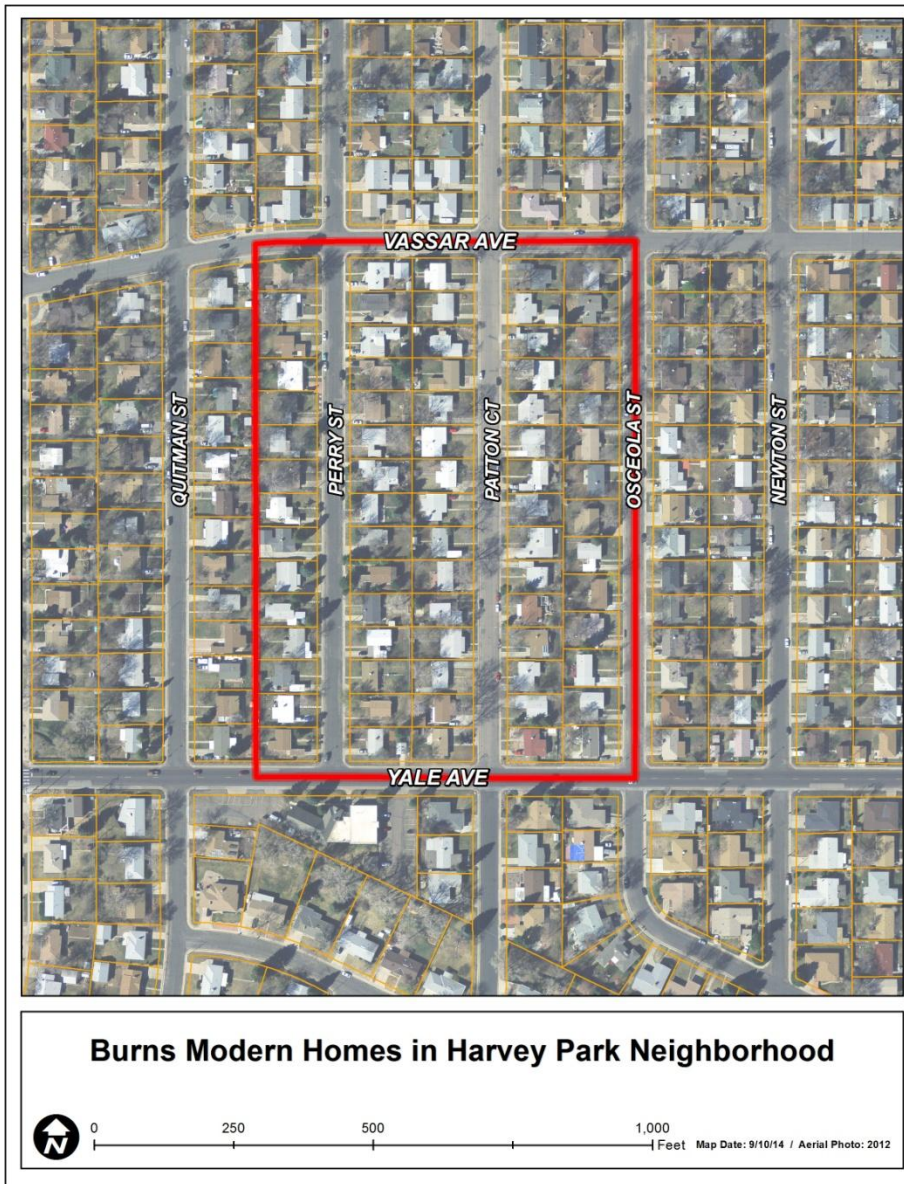
Within this Pilot Area, no properties were found to be individually significant for listing at the Local Level. Future survey and research of historic significance may require the reevaluation of this determination.

Based on the visual survey of this Pilot Area, there are concentrations of specific, developer-designed housing that could have potential as cohesive historic districts. Examples of these cohesive areas include:

- **Cliff May-Designed Homes**



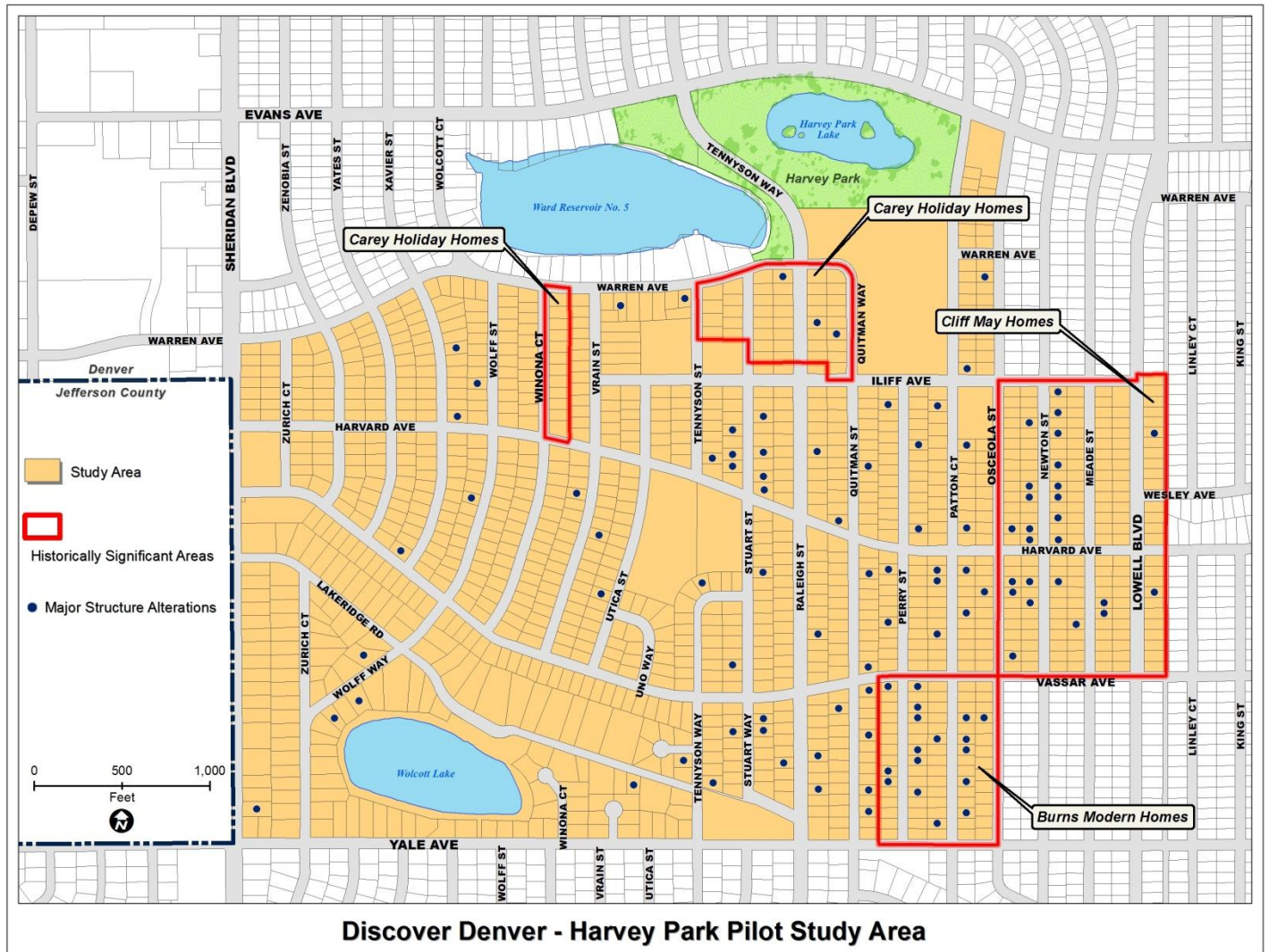
- Burns Modern Homes



- Carey Holiday Homes



Overall, properties in the Harvey Park, Pilot Area 1 survey area retain a high degree of historic integrity. Only 110 properties that were surveyed had major alterations or were new construction, representing 8% of the total surveyed area.



NOTE: The “Historically Significant” areas indicated in the map above have groupings of properties that retain specific, important historic characteristics. These areas could have potential for eligibility as a Local Historic District. Additional research, the support of the residents, and a designation application submittal, would be needed in order to formally nominate, or create, Local Historic Districts in any of these areas.

Fifteen properties in the Harvey Park Pilot Area were chosen to be surveyed at the Enhanced Level, and had additional research and 1403 Architectural Inventory Forms completed. Below is a map of the location of these properties.



Property Key:

Key - Site Number – Address

- 1 5DV.11502 – 4555 W. Lakeridge
- 2 5DV.11497 – 2510 S. Lowell
- 3 5DV.11503 – 2535 S. Lowell
- 4 5DV.11498 – 2545 S. Lowell
- 5 5DV.11500 – 2560 S. Lowell

Key - Site Number – Address

- 6 5DV.11496 – 2340 S. Meade
- 7 5DV.11499 – 2550 S. Newton
- 8 5DV.11504 – 2650 S. Perry
- 9 5DV.11506 – 2273 S. Raleigh
- 10 5DV.11505 – 2614 S. Raleigh

Key - Site Number – Address

- 11 5DV.11507 – 2510 S. Vrain
- 12 5DV.11508 – 2524 S. Vrain
- 13 5DV.11495 – 2251 S. Wolff
- 14 5DV.11509 – 2665 S. Zurich
- 15 5DV.11501 – 2699 S. Zurich

Survey Log Key – Potential Local Eligibility

The Discover Denver Survey Codes were developed for Discover Denver by the City and County of Denver’s Landmark Preservation Staff, in partnership with the Discover Denver management team. These codes only relate to how surveyed properties are evaluated by the City and County of Denver’s Landmarks Preservation Department for their potential eligibility as individual Denver Landmarks or as a part of a Denver Landmark Historic District. These codes are used for informational purposes, and are intended to assist city staff, property owners, and developers with understanding a property’s potential historic importance. Survey code determinations may be revised in the future should additional historic information be discovered, or if the property no longer retains its physical historic integrity.

No determination was made in this report on a property’s significance for inclusion on either the Colorado State Register of Historic Properties or the National Register of Historic Places, either individually or as a part of a historic district.

CODE	DESCRIPTION
PD-C	Potential District – Contributing*. Resource is a Contributing structure that is located within a cohesive geographic area that could potentially be eligible for Local Historic District nomination. Additional research, and the support of local residents, would be needed to create a Local Historic District.
PD-NC	Potential District – Non-Contributing**. Resource is a Non-Contributing structure that is located within a cohesive geographic area that could potentially be eligible for Local Historic District nomination. Additional research, and the support of local residents, would be needed to create a Local Historic District.
PI	Potentially Individually Eligible. Resource could potentially be eligible for Local Landmark nomination. More research, and a designation application submittal, would be needed to create an individual Landmark.
NE	Not Eligible Locally. Resource was not determined through the survey to be eligible for Local nomination as either an Individual Landmark or as part of a Local Historic District. Additional future research could alter this determination.

* “Contributing” means that the property retains its historic character and/or importance.

** “Non-Contributing” means that the property does not retain its historic character and/or importance.

Survey Log

RESOURCE NUMBER	ADDRESS	YEAR BUILT	STYLE	TYPE	PROPERTY USE	LANDMARK STATUS	POTENTIAL LOCAL ELIGIBILITY	MAJOR ALTERATIONS	SPECIAL NOTES
	2101 S Wolcott Ct	1956	Ranch	Ranch	Domestic - Single Family	NO	NE	NO	
	2102 S Xavier St	1956	Other	Split-Level	Domestic - Single Family	NO	NE	NO	
	2103 S Xavier St	1955	Raised	Ranch	Domestic - Single Family	NO	NE	NO	
	2104 S Yates St	1955	Other	Split-Level	Domestic - Single Family	NO	NE	NO	
	2105 S Yates St	1955	Raised	Ranch	Domestic - Single Family	NO	NE	NO	
	2106 S Zenobia St	1955	Raised	Ranch	Domestic - Single Family	NO	NE	NO	
	2107 S Wolcott Ct	1957	Ranch	Ranch	Domestic - Single Family	NO	NE	NO	
	2108 S Xavier St	1956	Raised	Ranch	Domestic - Single Family	NO	NE	NO	
	2109 S Xavier St	1955	Raised	Ranch	Domestic - Single Family	NO	NE	NO	
	2110 S Wolcott Ct	1958	Ranch	Ranch	Domestic - Single Family	NO	NE	NO	
	2110 S Yates St	1955	Raised	Ranch	Domestic - Single Family	NO	NE	NO	
	2111 S Wolcott Ct	1955	Contemporary	Ranch	Domestic - Single Family	NO	NE	NO	
	2111 S Yates St	1955	Raised	Ranch	Domestic - Single Family	NO	NE	NO	
	2112 S Patton Ct	1957	Ranch	Ranch	Domestic - Single Family	NO	NE	NO	
	2112 S Xavier St	1955	Raised	Ranch	Domestic - Single Family	NO	NE	NO	
	2112 S Zenobia St	1955	Raised	Ranch	Domestic - Single Family	NO	NE	NO	
	2113 S Xavier St	1955	Other	Split-Level	Domestic - Single Family	NO	NE	NO	
	2114 S Yates St	1955	Raised	Ranch	Domestic - Single Family	NO	NE	NO	
	2115 S Yates St	1955	Other	Split-Level	Domestic - Single Family	NO	NE	NO	
	2116 S Zenobia St	1955	Raised	Ranch	Domestic - Single Family	NO	NE	NO	
	2120 S Wolcott Ct	1957	Ranch	Ranch	Domestic - Single Family	NO	NE	NO	
	2121 S Wolcott Ct	1955	Contemporary	Ranch	Domestic - Single Family	NO	NE	NO	
	2122 S Xavier St	1955	Raised	Ranch	Domestic - Single Family	NO	NE	NO	
	2123 S Xavier St	1955	Raised	Ranch	Domestic - Single Family	NO	NE	NO	
	2124 S Yates St	1955	Raised	Ranch	Domestic - Single Family	NO	NE	NO	
	2125 S Yates St	1955	Raised	Ranch	Domestic - Single Family	NO	NE	NO	
	2126 S Zenobia St	1955	Raised	Ranch	Domestic - Single Family	NO	NE	NO	
	2128 S Patton Ct	1954	Ranch	Ranch	Domestic - Single Family	NO	NE	NO	
	2129 S Xavier St	1955	Raised	Ranch	Domestic - Single Family	NO	NE	NO	
	2130 S Wolcott Ct	1957	Ranch	Ranch	Domestic - Single Family	NO	NE	NO	

RESOURCE NUMBER	ADDRESS	YEAR BUILT	STYLE	TYPE	PROPERTY USE	LANDMARK STATUS	POTENTIAL LOCAL ELIGIBILITY	MAJOR ALTERATIONS	SPECIAL NOTES
	2130 S Yates St	1955	Other	Split-Level	Domestic - Single Family	NO	NE	NO	
	2131 S Wolcott Ct	1955	Contemporary	Ranch	Domestic - Single Family	NO	NE	NO	
	2131 S Yates St	1955	Raised	Ranch	Domestic - Single Family	NO	NE	NO	
	2132 S Xavier St	1955	Other	Split-Level	Domestic - Single Family	NO	NE	NO	
	2132 S Zenobia St	1955	Raised	Ranch	Domestic - Single Family	NO	NE	NO	
	2133 S Xavier St	1955	Raised	Ranch	Domestic - Single Family	NO	NE	NO	
	2134 S Yates St	1955	Raised	Ranch	Domestic - Single Family	NO	NE	NO	
	2135 S Yates St	1955	Other	Split-Level	Domestic - Single Family	NO	NE	NO	
	2136 S Zenobia St	1955	Raised	Ranch	Domestic - Single Family	NO	NE	NO	
	2137 S Osceola St	1954	Ranch	Ranch	Domestic - Single Family	NO	NE	NO	
	2138 S Patton Ct	1954	Ranch	Ranch	Domestic - Single Family	NO	NE	NO	
	2140 S Wolcott Ct	1956	Ranch	Ranch	Domestic - Single Family	NO	NE	NO	
	2141 S Wolcott Ct	1955	Contemporary	Ranch	Domestic - Single Family	NO	NE	NO	
	2142 S Xavier St	1955	Raised	Ranch	Domestic - Single Family	NO	NE	NO	
	2143 S Xavier St	1955	Other	Split-Level	Domestic - Single Family	NO	NE	NO	
	2144 S Yates St	1955	Raised	Ranch	Domestic - Single Family	NO	NE	NO	
	2145 S Yates St	1955	Raised	Ranch	Domestic - Single Family	NO	NE	NO	
	2146 S Zenobia St	1955	Other	Split-Level	Domestic - Single Family	NO	NE	NO	
	2147 S Osceola St	1954	Ranch	Ranch	Domestic - Single Family	NO	NE	NO	
	2148 S Patton Ct	1954	Ranch	Ranch	Domestic - Single Family	NO	NE	NO	
	2150 S Wolcott Ct	1958	Other	Ranch	Domestic - Single Family	NO	NE	NO	
	2150 S Yates St	1955	Raised	Ranch	Domestic - Single Family	NO	NE	NO	
	2151 S Wolcott Ct	1955	Contemporary	Ranch	Domestic - Single Family	NO	NE	NO	
	2151 S Yates St	1955	Other	Split-Level	Domestic - Single Family	NO	NE	NO	
	2152 S Xavier St	1955	Other	Split-Level	Domestic - Single Family	NO	NE	NO	
	2152 S Zenobia St	1955	Raised	Ranch	Domestic - Single Family	NO	NE	NO	
	2153 S Xavier St	1955	Raised	Ranch	Domestic - Single Family	NO	NE	NO	
	2154 S Yates St	1955	Raised	Ranch	Domestic - Single Family	NO	NE	NO	
	2155 S Yates St	1955	Raised	Ranch	Domestic - Single Family	NO	NE	NO	
	2156 S Zenobia St	1955	Raised	Ranch	Domestic - Single Family	NO	NE	NO	
	2157 S Osceola St	1954	Ranch	Ranch	Domestic - Single Family	NO	NE	NO	

RESOURCE NUMBER	ADDRESS	YEAR BUILT	STYLE	TYPE	PROPERTY USE	LANDMARK STATUS	POTENTIAL LOCAL ELIGIBILITY	MAJOR ALTERATIONS	SPECIAL NOTES
	2158 S Patton Ct	1954	Ranch	Ranch	Domestic - Single Family	NO	NE	NO	
	2158 S Xavier St	1955	Raised	Ranch	Domestic - Single Family	NO	NE	NO	
	2159 S Xavier St	1955	Raised	Ranch	Domestic - Single Family	NO	NE	NO	
	2160 S Wolcott Ct	1957	Ranch	Ranch	Domestic - Single Family	NO	NE	NO	
	2160 S Yates St	1955	Raised	Ranch	Domestic - Single Family	NO	NE	NO	
	2160 S Zenobia St	1955	Other	Split-Level	Domestic - Single Family	NO	NE	NO	
	2161 S Wolcott Ct	1955	Contemporary	Ranch	Domestic - Single Family	NO	NE	NO	
	2161 S Yates St	1955	Raised	Ranch	Domestic - Single Family	NO	NE	NO	
	2162 S Xavier St	1955	Other	Split-Level	Domestic - Single Family	NO	NE	NO	
	2163 S Xavier St	1955	Raised	Ranch	Domestic - Single Family	NO	NE	NO	
	2164 S Yates St	1955	Raised	Ranch	Domestic - Single Family	NO	NE	NO	
	2165 S Yates St	1955	Other	Split-Level	Domestic - Single Family	NO	NE	NO	
	2166 S Zenobia St	1955	Raised	Ranch	Domestic - Single Family	NO	NE	NO	
	2167 S Osceola St	1954	Ranch	Ranch	Domestic - Single Family	NO	NE	NO	
	2168 S Patton Ct	1954	Ranch	Ranch	Domestic - Single Family	NO	NE	NO	
	2170 S Wolcott Ct	2006	Other	Other	Domestic - Single Family	NO	NE	NO	
	2171 S Wolcott Ct	1955	Contemporary	Ranch	Domestic - Single Family	NO	NE	NO	
	2171 S Yates St	1955	Raised	Ranch	Domestic - Single Family	NO	NE	NO	
	2172 S Xavier St	1955	Other	Split-Level	Domestic - Single Family	NO	NE	NO	
	2172 S Zenobia St	1955	Other	Split-Level	Domestic - Single Family	NO	NE	NO	
	2173 S Xavier St	1955	Other	Split-Level	Domestic - Single Family	NO	NE	NO	
	2174 S Yates St	1955	Other	Split-Level	Domestic - Single Family	NO	NE	NO	
	2175 S Yates St	1955	Raised	Ranch	Domestic - Single Family	NO	NE	NO	
	2176 S Zenobia St	1955	Raised	Ranch	Domestic - Single Family	NO	NE	NO	
	2177 S Osceola St	1954	Ranch	Ranch	Domestic - Single Family	NO	NE	NO	
	2178 S Patton Ct	1954	Ranch	Ranch	Domestic - Single Family	NO	NE	NO	
	2179 S Xavier St	1955	Raised	Ranch	Domestic - Single Family	NO	NE	NO	
	2180 S Wolcott Ct	1957	Ranch	Ranch	Domestic - Single Family	NO	NE	NO	
	2180 S Yates St	1955	Raised	Ranch	Domestic - Single Family	NO	NE	NO	
	2181 S Wolcott Ct	1955	Contemporary	Ranch	Domestic - Single Family	NO	NE	YES	
	2181 S Yates St	1955	Raised	Ranch	Domestic - Single Family	NO	NE	NO	

RESOURCE NUMBER	ADDRESS	YEAR BUILT	STYLE	TYPE	PROPERTY USE	LANDMARK STATUS	POTENTIAL LOCAL ELIGIBILITY	MAJOR ALTERATIONS	SPECIAL NOTES
	2182 S Xavier St	1955	Raised	Ranch	Domestic - Single Family	NO	NE	NO	
	2182 S Zenobia St	1955	Other	Split-Level	Domestic - Single Family	NO	NE	NO	
	2183 S Xavier St	1955	Other	Split-Level	Domestic - Single Family	NO	NE	NO	
	2184 S Yates St	1955	Other	Split-Level	Domestic - Single Family	NO	NE	NO	
	2185 S Yates St	1955	Raised	Ranch	Domestic - Single Family	NO	NE	NO	
	2186 S Zenobia St	1955	Raised	Ranch	Domestic - Single Family	NO	NE	NO	
	2187 S Osceola St	1954	Ranch	Ranch	Domestic - Single Family	NO	NE	NO	
	2187 S Wolcott Ct	1955	Contemporary	Ranch	Domestic - Single Family	NO	NE	NO	
	2188 S Patton Ct	1954	Ranch	Ranch	Domestic - Single Family	NO	NE	NO	
	2188 S Xavier St	1955	Raised	Ranch	Domestic - Single Family	NO	NE	NO	
	2189 S Xavier St	1955	Raised	Ranch	Domestic - Single Family	NO	NE	NO	
	2190 S Wolcott Ct	1957	Ranch	Ranch	Domestic - Single Family	NO	NE	NO	
	2190 S Yates St	1955	Other	Split-Level	Domestic - Single Family	NO	NE	NO	
	2191 S Wolcott Ct	1955	Contemporary	Ranch	Domestic - Single Family	NO	NE	YES	
	2191 S Yates St	1955	Other	Split-Level	Domestic - Single Family	NO	NE	NO	
	2192 S Xavier St	1957	Raised	Ranch	Domestic - Single Family	NO	NE	NO	
	2192 S Zenobia St	1955	Raised	Ranch	Domestic - Single Family	NO	NE	NO	
	2193 S Xavier St	1955	Raised	Ranch	Domestic - Single Family	NO	NE	NO	
	2194 S Yates St	1955	Raised	Ranch	Domestic - Single Family	NO	NE	NO	
	2195 S Yates St	1955	Raised	Ranch	Domestic - Single Family	NO	NE	NO	
	2196 S Zenobia St	1955	Raised	Ranch	Domestic - Single Family	NO	NE	NO	
	2200 S Wolff St	1955	Other	Split-Level	Domestic - Single Family	NO	NE	NO	
	2200 S Yates St	1955	Raised	Ranch	Domestic - Single Family	NO	NE	NO	
	2201 S Quitman Way	1955	Contemporary	Ranch	Domestic - Single Family	NO	PD-C	NO	Carey Holiday
	2201 S Vrain St	1956	Ranch	Ranch	Domestic - Single Family	NO	NE	NO	
	2202 S Raleigh St	1955	Contemporary	Ranch	Domestic - Single Family	NO	PD-C	NO	Carey Holiday
	2202 S Winona Ct	1955	Contemporary	Ranch	Domestic - Single Family	NO	PD-C	NO	Carey Holiday
	2203 S Raleigh St	1955	Contemporary	Ranch	Domestic - Single Family	NO	PD-NC	YES	Carey Holiday
	2203 S Winona Ct	1955	Other	Split-Level	Domestic - Single Family	NO	NE	NO	
	2203 S Xavier St	1955	Other	Split-Level	Domestic - Single Family	NO	NE	NO	
	2204 S Stuart St	1955	Contemporary	Ranch	Domestic - Single Family	NO	PD-C	NO	Carey Holiday

RESOURCE NUMBER	ADDRESS	YEAR BUILT	STYLE	TYPE	PROPERTY USE	LANDMARK STATUS	POTENTIAL LOCAL ELIGIBILITY	MAJOR ALTERATIONS	SPECIAL NOTES
	2205 S Stuart St	1955	Contemporary	Ranch	Domestic - Single Family	NO	PD-C	NO	Carey Holiday
	2205 S Yates St	1955	Other	Split-Level	Domestic - Single Family	NO	NE	NO	
	2206 S Tennyson St	1956	Contemporary	Ranch	Domestic - Single Family	NO	PD-C	NO	Carey Holiday
	2206 S Zenobia St	1955	Other	Split-Level	Domestic - Single Family	NO	NE	NO	
	2207 S Osceola St	1954	Ranch	Ranch	Domestic - Single Family	NO	NE	NO	
	2207 S Zenobia St	1955	Other	Split-Level	Domestic - Single Family	NO	NE	NO	
	2208 S Patton Ct	1954	Ranch	Ranch	Domestic - Single Family	NO	NE	NO	
	2208 S Zurich Ct	1955	Other	Split-Level	Domestic - Single Family	NO	NE	NO	
	2209 S Zurich Ct	1955	Raised	Ranch	Domestic - Single Family	NO	NE	NO	
	2210 S Sheridan Blvd	1955	Raised	Ranch	Domestic - Single Family	NO	NE	NO	
	2211 S Quitman Way	1955	Contemporary	Ranch	Domestic - Single Family	NO	PD-C	NO	Carey Holiday
	2212 S Raleigh St	1955	Contemporary	Ranch	Domestic - Single Family	NO	PD-C	NO	Carey Holiday
	2213 S Raleigh St	1955	Contemporary	Ranch	Domestic - Single Family	NO	PD-C	NO	Carey Holiday
	2214 S Stuart St	1955	Contemporary	Ranch	Domestic - Single Family	NO	PD-C	NO	Carey Holiday
	2217 S Osceola St	1954	Ranch	Ranch	Domestic - Single Family	NO	NE	YES	
	2218 S Patton Ct	1954	Ranch	Ranch	Domestic - Single Family	NO	NE	NO	
	2220 S Vrain St	1959	Raised	Ranch	Domestic - Single Family	NO	NE	NO	
	2220 S Wolff St	1955	Raised	Ranch	Domestic - Single Family	NO	NE	NO	
	2221 S Quitman Way	1955	Contemporary	Ranch	Domestic - Single Family	NO	PD-C	NO	Carey Holiday
	2221 S Vrain St	1956	Ranch	Ranch	Domestic - Single Family	NO	NE	NO	
	2221 S Wolff St	1955	Raised	Ranch	Domestic - Single Family	NO	NE	NO	
	2222 S Raleigh St	1956	Contemporary	Ranch	Domestic - Single Family	NO	PD-C	NO	Carey Holiday
	2222 S Xavier St	1955	Other	Split-Level	Domestic - Single Family	NO	NE	NO	
	2223 S Raleigh St	1955	Contemporary	Ranch	Domestic - Single Family	NO	PD-C	NO	Carey Holiday
	2223 S Winona Ct	1955	Raised	Ranch	Domestic - Single Family	NO	NE	NO	
	2223 S Xavier St	1955	Raised	Ranch	Domestic - Single Family	NO	NE	NO	
	2224 S Stuart St	1955	Contemporary	Ranch	Domestic - Single Family	NO	PD-C	NO	Carey Holiday
	2224 S Yates St	1955	Raised	Ranch	Domestic - Single Family	NO	NE	NO	
	2225 S Stuart St	1955	Contemporary	Ranch	Domestic - Single Family	NO	PD-C	NO	Carey Holiday
	2225 S Yates St	1955	Raised	Ranch	Domestic - Single Family	NO	NE	NO	
	2226 S Tennyson St	1956	Contemporary	Ranch	Domestic - Single Family	NO	PD-C	NO	Carey Holiday

RESOURCE NUMBER	ADDRESS	YEAR BUILT	STYLE	TYPE	PROPERTY USE	LANDMARK STATUS	POTENTIAL LOCAL ELIGIBILITY	MAJOR ALTERATIONS	SPECIAL NOTES
	2227 S Osceola St	1954	Ranch	Ranch	Domestic - Single Family	NO	NE	NO	
	2227 S Tennyson St	1958	Ranch	Ranch	Domestic - Single Family	NO	NE	NO	
	2228 S Patton Ct	1954	Ranch	Ranch	Domestic - Single Family	NO	NE	NO	
	2230 S Vrain St	1958	Other	Split-Level	Domestic - Single Family	NO	NE	NO	
	2231 S Quitman Way	1955	Contemporary	Ranch	Domestic - Single Family	NO	PD-C	NO	Carey Holiday
	2231 S Vrain St	1956	Ranch	Ranch	Domestic - Single Family	NO	NE	NO	
	2232 S Raleigh St	1956	Contemporary	Ranch	Domestic - Single Family	NO	PD-C	NO	Carey Holiday
	2232 S Winona Ct	1955	Contemporary	Ranch	Domestic - Single Family	NO	PD-C	NO	Carey Holiday
	2233 S Raleigh St	1955	Contemporary	ranch	Domestic - Single Family	NO	PD-C	NO	Carey Holiday
	2234 S Stuart St	1955	Contemporary	Ranch	Domestic - Single Family	NO	PD-C	NO	Carey Holiday
	2235 S Stuart St	1955	Contemporary	Ranch	Domestic - Single Family	NO	PD-C	NO	Carey Holiday
	2236 S Tennyson St	1956	Contemporary	Ranch	Domestic - Single Family	NO	PD-C	NO	Carey Holiday
	2237 S Osceola St	1954	Ranch	Ranch	Domestic - Single Family	NO	NE	NO	
	2238 S Patton Ct	1954	Ranch	Ranch	Domestic - Single Family	NO	NE	NO	
	2241 S Quitman Way	1955	Contemporary	Ranch	Domestic - Single Family	NO	PD-C	NO	Carey Holiday
	2241 S Vrain St	1956	Ranch	Ranch	Domestic - Single Family	NO	NE	NO	
	2242 S Raleigh St	1955	Contemporary	Ranch	Domestic - Single Family	NO	PD-NC	YES	Carey Holiday
	2243 S Raleigh St	1955	Contemporary	Ranch	Domestic - Single Family	NO	PD-C	NO	Carey Holiday
	2244 S Stuart St	1955	Contemporary	Ranch	Domestic - Single Family	NO	PD-C	NO	Carey Holiday
	2245 S Stuart St	1955	Contemporary	Ranch	Domestic - Single Family	NO	PD-C	NO	Carey Holiday
	2247 S Osceola St	1954	Ranch	Ranch	Domestic - Single Family	NO	NE	NO	
	2248 S Patton Ct	1954	Ranch	Ranch	Domestic - Single Family	NO	NE	NO	
	2250 S Quitman St	1956	Modern Movement	Other	Education - School	NO	NE	NO	
	2250 S Vrain St	1958	Other	Split-Level	Domestic - Single Family	NO	NE	NO	
	2250 S Wolff St	1955	Raised	Ranch	Domestic - Single Family	NO	NE	NO	
	2251 S Quitman Way	1955	Contemporary	Ranch	Domestic - Single Family	NO	PD-NC	YES	Carey Holiday
	2251 S Vrain St	1956	Ranch	Ranch	Domestic - Single Family	NO	NE	NO	
5DV.11495	2251 S Wolff St	1955	Raised	Ranch	Domestic - Single Family	NO	NE	NO	
	2252 S Raleigh St	1956	Contemporary	Ranch	Domestic - Single Family	NO	PD-C	NO	Carey Holiday
	2252 S Xavier St	1955	Raised	Ranch	Domestic - Single Family	NO	NE	NO	
	2253 S Raleigh St	1955	Contemporary	Ranch	Domestic - Single Family	NO	PD-C	NO	Carey Holiday

RESOURCE NUMBER	ADDRESS	YEAR BUILT	STYLE	TYPE	PROPERTY USE	LANDMARK STATUS	POTENTIAL LOCAL ELIGIBILITY	MAJOR ALTERATIONS	SPECIAL NOTES
	2253 S Winona Ct	1955	Raised	Ranch	Domestic - Single Family	NO	NE	NO	
	2253 S Xavier St	1955	Other	Split-Level	Domestic - Single Family	NO	NE	NO	
	2254 S Stuart St	1955	Contemporary	Ranch	Domestic - Single Family	NO	PD-C	NO	Carey Holiday
	2254 S Yates St	1955	Raised	Ranch	Domestic - Single Family	NO	NE	NO	
	2255 S Stuart St	1955	Contemporary	Ranch	Domestic - Single Family	NO	PD-C	NO	Carey Holiday
	2255 S Yates St	1955	Raised	Ranch	Domestic - Single Family	NO	NE	NO	
	2256 S Tennyson St	1956	Contemporary	Ranch	Domestic - Single Family	NO	PD-C	NO	Carey Holiday
	2256 S Zenobia St	1955	Raised	Ranch	Domestic - Single Family	NO	NE	NO	
	2257 S Osceola St	1954	Ranch	Ranch	Domestic - Single Family	NO	NE	NO	
	2257 S Zenobia St	1955	Other	Split-Level	Domestic - Single Family	NO	NE	NO	
	2258 S Patton Ct	1954	Ranch	Ranch	Domestic - Single Family	NO	NE	NO	
	2258 S Zurich Ct	1955	Raised	Ranch	Domestic - Single Family	NO	NE	NO	
	2259 S Zurich Ct	1955	Raised	Ranch	Domestic - Single Family	NO	NE	NO	
	2260 S Sheridan Blvd	1955	Raised	Ranch	Domestic - Single Family	NO	NE	NO	
	2261 S Quitman Way	1955	Contemporary	Ranch	Domestic - Single Family	NO	PD-C	NO	Carey Holiday
	2261 S Vrain St	1956	Ranch	Ranch	Domestic - Single Family	NO	NE	NO	
	2262 S Raleigh St	1955	Contemporary	Ranch	Domestic - Single Family	NO	PD-C	NO	Carey Holiday
	2262 S Winona Ct	1955	Contemporary	Ranch	Domestic - Single Family	NO	PD-C	NO	Carey Holiday
	2263 S Raleigh St	1955	Contemporary	Ranch	Domestic - Single Family	NO	PD-C	NO	Carey Holiday
	2264 S Stuart St	1955	Contemporary	Ranch	Domestic - Single Family	NO	PD-C	NO	Carey Holiday
	2267 S Osceola St	1954	Ranch	Ranch	Domestic - Single Family	NO	NE	NO	
	2268 S Patton Ct	1954	Ranch	Ranch	Domestic - Single Family	NO	NE	NO	
	2270 S Vrain St	1959	Other	Split-Level	Domestic - Single Family	NO	NE	NO	
	2271 S Quitman Way	1955	Contemporary	Ranch	Domestic - Single Family	NO	PD-C	NO	Carey Holiday
	2271 S Vrain St	1956	Ranch	Ranch	Domestic - Single Family	NO	NE	NO	
	2272 S Raleigh St	1955	Contemporary	Ranch	Domestic - Single Family	NO	PD-C	NO	Carey Holiday
5DV.11506	2273 S Raleigh St	1955	Contemporary	Ranch	Domestic - Single Family	NO	PD-C	NO	Carey Holiday
	2274 S Stuart St	1955	Contemporary	Ranch	Domestic - Single Family	NO	PD-C	NO	Carey Holiday
	2277 S Osceola St	1954	Ranch	Ranch	Domestic - Single Family	NO	NE	NO	
	2277 S Tennyson St	1921	Other	Other	Domestic - Single Family	NO	NE	NO	
	2278 S Patton Ct	1954	Ranch	Ranch	Domestic - Single Family	NO	NE	NO	

RESOURCE NUMBER	ADDRESS	YEAR BUILT	STYLE	TYPE	PROPERTY USE	LANDMARK STATUS	POTENTIAL LOCAL ELIGIBILITY	MAJOR ALTERATIONS	SPECIAL NOTES
	2280 S Vrain St	1958	Other	Split-Level	Domestic - Single Family	NO	NE	NO	
	2280 S Wolff St	1955	Other	Split-Level	Domestic - Single Family	NO	NE	NO	
	2281 S Quitman Way	1955	Contemporary	Ranch	Domestic - Single Family	NO	PD-C	NO	Carey Holiday
	2281 S Vrain St	1956	Ranch	Ranch	Domestic - Single Family	NO	NE	NO	
	2281 S Wolff St	1955	Raised	Ranch	Domestic - Single Family	NO	NE	NO	
	2282 S Xavier St	1955	Raised	Ranch	Domestic - Single Family	NO	NE	NO	
	2283 S Winona Ct	1955	Raised	Ranch	Domestic - Single Family	NO	NE	NO	
	2283 S Xavier St	1955	Raised	Ranch	Domestic - Single Family	NO	NE	NO	
	2284 S Yates St	1955	Raised	Ranch	Domestic - Single Family	NO	NE	NO	
	2287 S Osceola St	1954	Ranch	Ranch	Domestic - Single Family	NO	NE	NO	
	2288 S Patton Ct	1954	Ranch	Ranch	Domestic - Single Family	NO	NE	NO	
	2288 S Tennyson St	1970	Other	Other	Religious - Church	NO	NE	NO	
	2292 S Winona Ct	1955	Contemporary	Ranch	Domestic - Single Family	NO	PD-C	NO	Carey Holiday
	2297 S Osceola St	1954	Ranch	Ranch	Domestic - Single Family	NO	NE	NO	
	2298 S Patton Ct	1954	Ranch	Ranch	Domestic - Single Family	NO	NE	YES	
	2300 S Lowell Blvd	1955	Contemporary	Ranch	Domestic - Single Family	NO	PD-C	NO	Cliff May
	2300 S Meade St	1970	Other	Other	Domestic - Single Family	NO	NE	NO	
	2300 S Newton St	1957	Contemporary	Ranch	Domestic - Single Family	NO	PD-NC	YES	Cliff May
	2300 S Osceola St	1955	Contemporary	Ranch	Domestic - Single Family	NO	PD-C	NO	Cliff May
	2300 S Patton Ct	1963	Modern Movement	Other	Religious - Church	NO	NE	NO	
	2300 S Quitman St	1956	Ranch	Ranch	Domestic - Single Family	NO	NE	NO	
	2300 S Wolff St	1957	Raised	Ranch	Domestic - Single Family	NO	NE	NO	
	2301 S Lowell Blvd	1931	Ranch	Ranch	Domestic - Single Family	NO	NE	NO	
	2301 S Quitman St	1956	Ranch	Ranch	Domestic - Single Family	NO	NE	NO	
	2301 S Vrain St	1956	Ranch	Ranch	Domestic - Single Family	NO	NE	NO	
	2301 S Wolff St	1955	Other	Split-Level	Domestic - Single Family	NO	NE	NO	
	2302 S Raleigh St	1956	Ranch	Ranch	Domestic - Single Family	NO	NE	NO	
	2302 S Winona Ct	1955	Contemporary	Ranch	Domestic - Single Family	NO	PD-C	NO	Carey Holiday
	2302 S Xavier St	1955	Raised	Ranch	Domestic - Single Family	NO	NE	NO	
	2303 S Raleigh St	1956	Ranch	Ranch	Domestic - Single Family	NO	NE	NO	
	2303 S Winona Ct	1955	Raised	Ranch	Domestic - Single Family	NO	NE	NO	

RESOURCE NUMBER	ADDRESS	YEAR BUILT	STYLE	TYPE	PROPERTY USE	LANDMARK STATUS	POTENTIAL LOCAL ELIGIBILITY	MAJOR ALTERATIONS	SPECIAL NOTES
	2303 S Xavier St	1955	Raised	Ranch	Domestic - Single Family	NO	NE	NO	
	2304 S Stuart St	1956	Ranch	Ranch	Domestic - Single Family	NO	NE	NO	
	2304 S Yates St	1955	Raised	Ranch	Domestic - Single Family	NO	NE	NO	
	2305 S Meade St	1955	Other	Other	Domestic - Single Family	NO	NE	NO	
	2305 S Newton St	1955	Contemporary	Ranch	Domestic - Single Family	NO	PD-C	NO	Cliff May
	2305 S Stuart St	1956	Ranch	Ranch	Domestic - Single Family	NO	NE	NO	
	2305 S Yates St	1955	Other	Split-Level	Domestic - Single Family	NO	NE	NO	
	2306 S Tennyson St	1956	Ranch	Ranch	Domestic - Single Family	NO	NE	NO	
	2306 S Zenobia St	1955	Raised	Ranch	Domestic - Single Family	NO	NE	NO	
	2307 S Patton Ct	1957	Ranch	Ranch	Domestic - Single Family	NO	NE	NO	
	2308 S Perry St	1957	Ranch	Ranch	Domestic - Single Family	NO	NE	NO	
	2308 S Utica St	1957	Other	Split-Level	Domestic - Single Family	NO	NE	NO	
	2308 S Zurich Ct	1955	Raised	Ranch	Domestic - Single Family	NO	NE	NO	
	2309 S Perry St	1956	Ranch	Ranch	Domestic - Single Family	NO	NE	NO	
	2309 S Zurich Ct	1955	Raised	Ranch	Domestic - Single Family	NO	NE	NO	
	2310 S Lowell Blvd	1955	Contemporary	Ranch	Domestic - Single Family	NO	PD-C	NO	Cliff May
	2310 S Quitman St	1956	Ranch	Ranch	Domestic - Single Family	NO	NE	NO	
	2310 S Sheridan Blvd	1955	Raised	Ranch	Domestic - Single Family	NO	NE	NO	
	2311 S Quitman St	1956	Ranch	Ranch	Domestic - Single Family	NO	NE	NO	
	2312 S Raleigh St	1956	Ranch	Ranch	Domestic - Single Family	NO	NE	NO	
	2313 S Raleigh St	1956	Ranch	Ranch	Domestic - Single Family	NO	NE	NO	
	2314 S Stuart St	1956	Ranch	Ranch	Domestic - Single Family	NO	NE	NO	
	2315 S Meade St	1955	Contemporary	Ranch	Domestic - Single Family	NO	PD-C	NO	Cliff May
	2315 S Newton St	1955	Contemporary	Ranch	Domestic - Single Family	NO	PD-C	NO	Cliff May
	2317 S Patton Ct	1957	Ranch	Ranch	Domestic - Single Family	NO	NE	YES	
	2318 S Perry St	1956	Ranch	Ranch	Domestic - Single Family	NO	NE	NO	
	2319 S Perry St	1956	Ranch	Ranch	Domestic - Single Family	NO	NE	YES	
	2320 S Lowell Blvd	1955	Contemporary	Ranch	Domestic - Single Family	NO	PD-C	NO	Cliff May
	2320 S Meade St	1965	Ranch	Ranch	Domestic - Single Family	NO	NE	NO	
	2320 S Newton St	1955	Contemporary	Ranch	Domestic - Single Family	NO	PD-C	NO	Cliff May
	2320 S Osceola St	1955	Contemporary	Ranch	Domestic - Single Family	NO	PD-C	NO	Cliff May

	2322 S Winona Ct	1955	Contemporary	Ranch	Domestic - Single Family	NO	PD-C	NO	Carey Holiday
	2325 S Lowell Blvd	1955	Contemporary	Ranch	Domestic - Single Family	NO	PD-C	NO	Cliff May
	2325 S Meade St	1955	Contemporary	Ranch	Domestic - Single Family	NO	PD-C	NO	Cliff May
	2325 S Newton St	1956	Contemporary	Ranch	Domestic - Single Family	NO	PD-C	NO	Cliff May
	2325 S Stuart St	1956	Ranch	Ranch	Domestic - Single Family	NO	NE	NO	
	2326 S Tennyson St	1956	Ranch	Ranch	Domestic - Single Family	NO	NE	NO	
	2330 S Lowell Blvd	1955	Contemporary	Ranch	Domestic - Single Family	NO	PD-C	NO	Cliff May
	2330 S Meade St	1955	Contemporary	Ranch	Domestic - Single Family	NO	PD-C	NO	Cliff May
	2330 S Newton St	1955	Contemporary	Ranch	Domestic - Single Family	NO	PD-NC	YES	Cliff May
	2330 S Osceola St	1955	Contemporary	Ranch	Domestic - Single Family	NO	PD-C	NO	Cliff May
	2330 S Quitman St	1956	Ranch	Ranch	Domestic - Single Family	NO	NE	NO	
	2330 S Wolff St	1955	Other	Split-Level	Domestic - Single Family	NO	NE	NO	
	2331 S Quitman St	1956	Ranch	Ranch	Domestic - Single Family	NO	NE	NO	
	2331 S Wolff St	1955	Raised	Ranch	Domestic - Single Family	NO	NE	NO	
	2332 S Raleigh St	1956	Ranch	Ranch	Domestic - Single Family	NO	NE	NO	
	2332 S Xavier St	1955	Other	Split-Level	Domestic - Single Family	NO	NE	YES	
	2333 S Raleigh St	1957	Ranch	Ranch	Domestic - Single Family	NO	NE	NO	
	2333 S Winona Ct	1955	Other	Split-Level	Domestic - Single Family	NO	NE	NO	
	2333 S Xavier St	1955	Raised	Ranch	Domestic - Single Family	NO	NE	NO	
	2334 S Stuart St	1956	Ranch	Ranch	Domestic - Single Family	NO	NE	YES	
	2335 S Lowell Blvd	1955	Contemporary	Ranch	Domestic - Single Family	NO	PD-C	NO	Cliff May
	2335 S Meade St	1955	Contemporary	Ranch	Domestic - Single Family	NO	PD-C	NO	Cliff May
	2335 S Newton St	1956	Contemporary	Ranch	Domestic - Single Family	NO	PD-NC	YES	Cliff May
	2337 S Patton Ct	1957	Ranch	Ranch	Domestic - Single Family	NO	NE	NO	
	2337 S Tennyson St	1959	Ranch	Ranch	Domestic - Single Family	NO	NE	NO	
	2338 S Perry St	1957	Ranch	Ranch	Domestic - Single Family	NO	NE	NO	
	2338 S Utica St	1957	Ranch	Ranch	Domestic - Single Family	NO	NE	NO	
	2339 S Perry St	1956	Ranch	Ranch	Domestic - Single Family	NO	NE	NO	
	2340 S Lowell Blvd	1955	Contemporary	Ranch	Domestic - Single Family	NO	PD-C	NO	Cliff May
5DV.11496	2340 S Meade St	1955	Contemporary	Ranch	Domestic - Single Family	NO	PD-C	NO	Cliff May
	2340 S Newton St	1955	Contemporary	Ranch	Domestic - Single Family	NO	PD-C	NO	Cliff May
	2340 S Osceola St	1956	Contemporary	Ranch	Domestic - Single Family	NO	PD-C	NO	Cliff May
	2344 S Yates St	1955	Raised	Ranch	Domestic - Single Family	NO	NE	NO	

	2345 S Lowell Blvd	1955	Contemporary	Ranch	Domestic - Single Family	NO	PD-C	NO	Cliff May
	2345 S Meade St	1955	Contemporary	Ranch	Domestic - Single Family	NO	PD-C	NO	Cliff May
	2345 S Newton St	1955	Contemporary	Ranch	Domestic - Single Family	NO	PD-C	NO	Cliff May
	2345 S Stuart St	1956	Ranch	Ranch	Domestic - Single Family	NO	NE	NO	
	2345 S Yates St	1955	Raised	Ranch	Domestic - Single Family	NO	NE	NO	
	2346 S Tennyson St	1956	Ranch	Ranch	Domestic - Single Family	NO	NE	NO	
	2346 S Zenobia St	1955	Other	Split-Level	Domestic - Single Family	NO	NE	NO	
	2347 S Zenobia St	1955	Other	Split-Level	Domestic - Single Family	NO	NE	NO	
	2348 S Zurich Ct	1955	Other	Split-Level	Domestic - Single Family	NO	NE	NO	
	2349 S Utica St	1959	Other	Other	Domestic - Single Family	NO	NE	NO	Homeowner-Designed
	2349 S Zurich Ct	1955	Raised	Ranch	Domestic - Single Family	NO	NE	NO	
	2350 S Lowell Blvd	1955	Contemporary	Ranch	Domestic - Single Family	NO	PD-NC	YES	Cliff May
	2350 S Meade St	1955	Contemporary	Ranch	Domestic - Single Family	NO	PD-C	NO	Cliff May
	2350 S Newton St	1955	Other	Other	Domestic - Single Family	NO	NE	YES	
	2350 S Osceola St	1956	Contemporary	Ranch	Domestic - Single Family	NO	PD-C	NO	Cliff May
	2350 S Quitman St	1957	Ranch	Ranch	Domestic - Single Family	NO	NE	NO	
	2350 S Sheridan Blvd	1955	Raised	Ranch	Domestic - Single Family	NO	NE	NO	
	2350 S Vrain St	1956	Raised	Ranch	Domestic - Single Family	NO	NE	NO	
	2351 S Quitman St	1956	Ranch	Ranch	Domestic - Single Family	NO	NE	NO	
	2351 S Vrain St	1956	Other	Other	Domestic - Single Family	NO	NE	NO	
	2352 S Raleigh St	1956	Ranch	Ranch	Domestic - Single Family	NO	NE	NO	
	2352 S Winona Ct	1955	Contemporary	Ranch	Domestic - Single Family	NO	PD-C	NO	Carey Holiday
	2353 S Raleigh St	1956	Ranch	Ranch	Domestic - Single Family	NO	NE	NO	
	2354 S Stuart St	1956	Ranch	Ranch	Domestic - Single Family	NO	NE	NO	
	2355 S Lowell Blvd	1955	Contemporary	Ranch	Domestic - Single Family	NO	PD-C	NO	Cliff May
	2355 S Meade St	1955	Contemporary	Ranch	Domestic - Single Family	NO	PD-C	NO	Cliff May
	2355 S Newton St	1955	Contemporary	Ranch	Domestic - Single Family	NO	PD-C	NO	Cliff May
	2358 S Perry St	1956	Ranch	Ranch	Domestic - Single Family	NO	NE	NO	
	2359 S Perry St	1956	Ranch	Ranch	Domestic - Single Family	NO	NE	NO	
	2360 S Lowell Blvd	1955	Contemporary	Ranch	Domestic - Single Family	NO	PD-C	NO	Cliff May
	2360 S Meade St	1955	Contemporary	Ranch	Domestic - Single Family	NO	PD-C	NO	Cliff May
	2360 S Newton St	1955	Contemporary	Ranch	Domestic - Single Family	NO	PD-C	NO	Cliff May

	2360 S Osceola St	1955	Contemporary	Ranch	Domestic - Single Family	NO	PD-C	NO	Cliff May
	2360 S Wolff St	1955	Raised	Ranch	Domestic - Single Family	NO	NE	NO	
	2361 S Wolff St	1955	Other	Split-Level	Domestic - Single Family	NO	NE	NO	
	2362 S Xavier St	1955	Raised	Ranch	Domestic - Single Family	NO	NE	NO	
	2363 S Winona Ct	1955	Raised	Ranch	Domestic - Single Family	NO	NE	NO	
	2363 S Xavier St	1955	Raised	Ranch	Domestic - Single Family	NO	NE	NO	
	2365 S Lowell Blvd	1955	Contemporary	Ranch	Domestic - Single Family	NO	PD-C	NO	Cliff May
	2365 S Meade St	1955	Contemporary	Ranch	Domestic - Single Family	NO	PD-C	NO	Cliff May
	2365 S Newton St	1955	Contemporary	Ranch	Domestic - Single Family	NO	PD-C	NO	Cliff May
	2365 S Stuart St	1956	Ranch	Ranch	Domestic - Single Family	NO	NE	YES	
	2366 S Tennyson St	1956	Ranch	Ranch	Domestic - Single Family	NO	NE	NO	
	2367 S Tennyson St	1965	Ranch	Ranch	Domestic - Single Family	NO	NE	NO	
	2368 S Utica St	1959	Ranch	Ranch	Domestic - Single Family	NO	NE	NO	
	2370 S Lowell Blvd	1955	Contemporary	Ranch	Domestic - Single Family	NO	PD-C	NO	Cliff May
	2370 S Meade St	1955	Contemporary	Ranch	Domestic - Single Family	NO	PD-C	NO	Cliff May
	2370 S Newton St	1955	Contemporary	Ranch	Domestic - Single Family	NO	PD-C	NO	Cliff May
	2370 S Osceola St	1955	Contemporary	Ranch	Domestic - Single Family	NO	PD-C	NO	Cliff May
	2370 S Quitman St	1956	Ranch	Ranch	Domestic - Single Family	NO	NE	NO	
	2372 S Raleigh St	1956	Ranch	Ranch	Domestic - Single Family	NO	NE	NO	
	2373 S Raleigh St	1956	Ranch	Ranch	Domestic - Single Family	NO	NE	NO	
	2374 S Stuart St	1956	Ranch	Ranch	Domestic - Single Family	NO	NE	NO	
	2375 S Lowell Blvd	1955	Contemporary	Ranch	Domestic - Single Family	NO	PD-C	NO	Cliff May
	2375 S Meade St	1955	Contemporary	Ranch	Domestic - Single Family	NO	PD-C	NO	Cliff May
	2375 S Newton St	1955	Contemporary	Ranch	Domestic - Single Family	NO	PD-C	NO	Cliff May
	2377 S Patton Ct	1957	Ranch	Ranch	Domestic - Single Family	NO	NE	NO	
	2378 S Perry St	1956	Ranch	Ranch	Domestic - Single Family	NO	NE	NO	
	2379 S Perry St	1956	Ranch	Ranch	Domestic - Single Family	NO	NE	NO	
	2380 S Lowell Blvd	1955	Contemporary	Ranch	Domestic - Single Family	NO	PD-C	NO	Cliff May
	2380 S Meade St	1955	Contemporary	Ranch	Domestic - Single Family	NO	PD-C	NO	Cliff May
	2380 S Newton St	1955	Contemporary	Ranch	Domestic - Single Family	NO	PD-NC	YES	Cliff May
	2380 S Osceola St	1955	Other	Other	Domestic - Single Family	NO	NE	NO	
	2380 S Quitman St	1956	Ranch	Ranch	Domestic - Single Family	NO	NE	NO	
	2381 S Quitman St	1956	Ranch	Ranch	Domestic - Single Family	NO	NE	NO	

	2382 S Raleigh St	1956	Ranch	Ranch	Domestic - Single Family	NO	NE	YES	
	2382 S Winona Ct	1955	Contemporary	Ranch	Domestic - Single Family	NO	PD-C	NO	Carey Holiday
	2385 S Lowell Blvd	1955	Contemporary	Ranch	Domestic - Single Family	NO	PD-C	NO	Cliff May
	2385 S Osceola St	1956	Ranch	Ranch	Domestic - Single Family	NO	NE	NO	
	2385 S Stuart St	1956	Ranch	Ranch	Domestic - Single Family	NO	NE	NO	
	2386 S Patton Ct	1957	Ranch	Ranch	Domestic - Single Family	NO	NE	YES	
	2386 S Tennyson St	1956	Ranch	Ranch	Domestic - Single Family	NO	NE	NO	
	2386 S Zenobia St	1955	Raised	Ranch	Domestic - Single Family	NO	NE	NO	
	2387 S Patton Ct	1957	Ranch	Ranch	Domestic - Single Family	NO	NE	NO	
	2387 S Zenobia St	1955	Raised	Ranch	Domestic - Single Family	NO	NE	NO	
	2388 S Perry St	1956	Ranch	Ranch	Domestic - Single Family	NO	NE	YES	
	2389 S Perry St	1956	Ranch	Ranch	Domestic - Single Family	NO	NE	NO	
	2389 S Utica St	1959	Ranch	Ranch	Domestic - Single Family	NO	NE	NO	
	2390 S Lowell Blvd	1955	Contemporary	Ranch	Domestic - Single Family	NO	PD-C	NO	Cliff May
	2390 S Quitman St	1956	Ranch	Ranch	Domestic - Single Family	NO	NE	NO	
	2390 S Wolff St	1955	Raised	Ranch	Domestic - Single Family	NO	NE	NO	
	2391 S Quitman St	1956	Ranch	Ranch	Domestic - Single Family	NO	NE	NO	
	2391 S Wolff St	1955	Raised	Ranch	Domestic - Single Family	NO	NE	NO	
	2392 S Raleigh St	1956	Ranch	Ranch	Domestic - Single Family	NO	NE	NO	
	2392 S Xavier St	1956	Other	Split-Level	Domestic - Single Family	NO	NE	NO	
	2393 S Raleigh St	1956	Ranch	Ranch	Domestic - Single Family	NO	NE	NO	
	2393 S Winona Ct	1955	Raised	Ranch	Domestic - Single Family	NO	NE	NO	
	2393 S Xavier St	1955	Raised	Ranch	Domestic - Single Family	NO	NE	NO	
	2394 S Stuart St	1956	Ranch	Ranch	Domestic - Single Family	NO	NE	YES	
	2394 S Yates St	1955	Raised	Ranch	Domestic - Single Family	NO	NE	NO	
	2395 S Lowell Blvd	1955	Contemporary	Ranch	Domestic - Single Family	NO	PD-C	NO	Cliff May
	2395 S Osceola St	1958	Ranch	Ranch	Domestic - Single Family	NO	NE	NO	
	2395 S Yates St	1955	Raised	Ranch	Domestic - Single Family	NO	NE	NO	
	2396 S Lowell Blvd	1955	Contemporary	Ranch	Domestic - Single Family	NO	PD-C	NO	Cliff May
	2396 S Patton Ct	1957	Ranch	Ranch	Domestic - Single Family	NO	NE	NO	
	2397 S Patton Ct	1957	Ranch	Ranch	Domestic - Single Family	NO	NE	NO	
	2397 S Tennyson St	1960	Ranch	Ranch	Domestic - Single Family	NO	NE	NO	
	2398 S Perry St	1956	Ranch	Ranch	Domestic - Single Family	NO	NE	NO	

	2398 S Utica St	1957	Ranch	Ranch	Domestic - Single Family	NO	NE	NO	
	2399 S Perry St	1956	Ranch	Ranch	Domestic - Single Family	NO	NE	NO	
	2400 S Lowell Blvd	1958	Ranch	Ranch	Domestic - Single Family	NO	NE	NO	
	2400 S Meade St	1955	Contemporary	Ranch	Domestic - Single Family	NO	PD-C	NO	Cliff May
	2400 S Newton St	1955	Contemporary	Ranch	Domestic - Single Family	NO	PD-C	NO	Cliff May
	2400 S Osceola St	1956	Other	Other	Domestic - Single Family	NO	NE	NO	
	2400 S Quitman St	1956	Ranch	Ranch	Domestic - Single Family	NO	NE	YES	
	2400 S Vrain St	1956	Ranch	Ranch	Domestic - Single Family	NO	NE	NO	
	2400 S Wolff St	1955	Raised	Ranch	Domestic - Single Family	NO	NE	NO	
	2401 S Quitman St	1956	Ranch	Ranch	Domestic - Single Family	NO	NE	NO	
	2401 S Vrain St	1956	Ranch	Ranch	Domestic - Single Family	NO	NE	NO	
	2401 S Wolff St	1955	Other	Split-Level	Domestic - Single Family	NO	NE	YES	
	2402 S Raleigh St	1956	Ranch	Ranch	Domestic - Single Family	NO	NE	NO	
	2402 S Winona Ct	1955	Contemporary	Ranch	Domestic - Single Family	NO	PD-C	NO	Carey Holiday
	2402 S Xavier St	1955	Raised	Ranch	Domestic - Single Family	NO	NE	NO	
	2403 S Raleigh St	1956	Ranch	Ranch	Domestic - Single Family	NO	NE	NO	
	2403 S Winona Ct	1955	Other	Split-Level	Domestic - Single Family	NO	NE	NO	
	2403 S Xavier St	1955	Other	Split-Level	Domestic - Single Family	NO	NE	NO	
	2404 S Stuart St	1956	Ranch	Ranch	Domestic - Single Family	NO	NE	NO	
	2404 S Yates St	1955	Raised	Ranch	Domestic - Single Family	NO	NE	NO	
	2405 S Lowell Blvd	1955	Contemporary	Ranch	Domestic - Single Family	NO	PD-C	NO	Cliff May
	2405 S Meade St	1955	Contemporary	Ranch	Domestic - Single Family	NO	PD-C	NO	Cliff May
	2405 S Newton St	1956	Contemporary	Ranch	Domestic - Single Family	NO	PD-C	NO	Cliff May
	2405 S Osceola St	1958	Ranch	Ranch	Domestic - Single Family	NO	NE	NO	
	2405 S Stuart St	1956	Ranch	Ranch	Domestic - Single Family	NO	NE	YES	
	2405 S Yates St	1955	Raised	Ranch	Domestic - Single Family	NO	NE	NO	
	2406 S Patton Ct	1957	Ranch	Ranch	Domestic - Single Family	NO	NE	NO	
	2406 S Tennyson St	1956	Ranch	Ranch	Domestic - Single Family	NO	NE	NO	
	2407 S Patton Ct	1957	Ranch	Ranch	Domestic - Single Family	NO	NE	NO	
	2407 S Tennyson St	1959	Ranch	Ranch	Domestic - Single Family	NO	NE	NO	
	2408 S Perry St	1956	Ranch	Ranch	Domestic - Single Family	NO	NE	NO	
	2408 S Utica St	1960	Ranch	Ranch	Domestic - Single Family	NO	NE	NO	
	2409 S Perry St	1956	Ranch	Ranch	Domestic - Single Family	NO	NE	NO	

	2409 S Utica St	1957	Ranch	Ranch	Domestic - Single Family	NO	NE	NO	
	2410 S Quitman St	1956	Ranch	Ranch	Domestic - Single Family	NO	NE	NO	
	2411 S Quitman St	1956	Ranch	Ranch	Domestic - Single Family	NO	NE	NO	
	2415 S Meade St	1955	Contemporary	Ranch	Domestic - Single Family	NO	PD-C	NO	Cliff May
	2415 S Newton St	1955	Contemporary	Ranch	Domestic - Single Family	NO	PD-NC	YES	Cliff May
	2415 S Osceola St	1958	Ranch	Ranch	Domestic - Single Family	NO	NE	NO	
	2416 S Patton Ct	1957	Ranch	Ranch	Domestic - Single Family	NO	NE	NO	
	2416 S Zenobia St	1955	Raised	Ranch	Domestic - Single Family	NO	NE	NO	
	2417 S Patton Ct	1957	Ranch	Ranch	Domestic - Single Family	NO	NE	NO	
	2417 S Zenobia St	1955	Raised	Ranch	Domestic - Single Family	NO	NE	NO	
	2418 S Perry St	1956	Ranch	Ranch	Domestic - Single Family	NO	NE	NO	
	2418 S Zurich Ct	1955	Raised	Ranch	Domestic - Single Family	NO	NE	NO	
	2419 S Perry St	1956	Ranch	Ranch	Domestic - Single Family	NO	NE	NO	
	2419 S Zurich Ct	1955	Raised	Ranch	Domestic - Single Family	NO	NE	NO	
	2420 S Meade St	1955	Contemporary	Ranch	Domestic - Single Family	NO	PD-C	NO	Cliff May
	2420 S Newton St	1955	Ranch	Ranch	Domestic - Single Family	NO	NE	YES	
	2420 S Osceola St	1956	Other	Other	Domestic - Single Family	NO	NE	NO	
	2420 S Sheridan Blvd	1955	Raised	Ranch	Domestic - Single Family	NO	NE	NO	
	2420 S Wolff St	1955	Other	Split-Level	Domestic - Single Family	NO	NE	NO	
	2421 S Wolff St	1955	Raised	Ranch	Domestic - Single Family	NO	NE	NO	
	2422 S Raleigh St	1956	Ranch	Ranch	Domestic - Single Family	NO	NE	NO	
	2422 S Xavier St	1955	Other	Split-Level	Domestic - Single Family	NO	NE	NO	
	2423 S Raleigh St	1956	Ranch	Ranch	Domestic - Single Family	NO	NE	NO	
	2423 S Winona Ct	1955	Raised	Ranch	Domestic - Single Family	NO	NE	NO	
	2423 S Xavier St	1955	Raised	Ranch	Domestic - Single Family	NO	NE	NO	
	2424 S Yates St	1955	Raised	Ranch	Domestic - Single Family	NO	NE	NO	
	2425 S Lowell Blvd	1955	Contemporary	Ranch	Domestic - Single Family	NO	PD-C	NO	Cliff May
	2425 S Yates St	1955	Raised	Ranch	Domestic - Single Family	NO	NE	NO	
	2430 S Lowell Blvd	1958	Ranch	Ranch	Domestic - Single Family	NO	NE	NO	
	2430 S Quitman St	1956	Ranch	Ranch	Domestic - Single Family	NO	NE	NO	
	2431 S Quitman St	1956	Ranch	Ranch	Domestic - Single Family	NO	NE	NO	
	2432 S Winona Ct	1955	Contemporary	Ranch	Domestic - Single Family	NO	PD-C	NO	Carey Holiday
	2434 S Stuart St	1956	Ranch	Ranch	Domestic - Single Family	NO	NE	YES	

	2435 S Meade St	1955	Contemporary	Ranch	Domestic - Single Family	NO	PD-C	NO	Cliff May
	2435 S Newton St	1955	Other	Other	Domestic - Single Family	NO	NE	YES	
	2435 S Stuart St	1956	Ranch	Ranch	Domestic - Single Family	NO	NE	YES	
	2438 S Perry St	1956	Ranch	Ranch	Domestic - Single Family	NO	NE	NO	
	2439 S Perry St	1956	Ranch	Ranch	Domestic - Single Family	NO	NE	NO	
	2440 S Meade St	1955	Contemporary	Ranch	Domestic - Single Family	NO	PD-C	NO	Cliff May
	2440 S Newton St	1955	Ranch	Ranch	Domestic - Single Family	NO	NE	YES	
	2440 S Osceola St	1956	Contemporary	Ranch	Domestic - Single Family	NO	PD-C	NO	Cliff May
	2440 S Vrain St	1956	Ranch	Ranch	Domestic - Single Family	NO	NE	NO	
	2441 S Vrain St	1956	Ranch	Ranch	Domestic - Single Family	NO	NE	NO	
	2442 S Raleigh St	1956	Ranch	Ranch	Domestic - Single Family	NO	NE	NO	
	2443 S Raleigh St	1956	Ranch	Ranch	Domestic - Single Family	NO	NE	NO	
	2445 S Lowell Blvd	1955	Contemporary	Ranch	Domestic - Single Family	NO	PD-C	NO	Cliff May
	2445 S Meade St	1955	Contemporary	Ranch	Domestic - Single Family	NO	PD-C	NO	Cliff May
	2445 S Newton St	1955	Contemporary	Ranch	Domestic - Single Family	NO	PD-C	NO	Cliff May
	2445 S Osceola St	1958	Ranch	Ranch	Domestic - Single Family	NO	NE	NO	
	2446 S Patton Ct	1957	Ranch	Ranch	Domestic - Single Family	NO	NE	NO	
	2446 S Tennyson St	1956	Ranch	Ranch	Domestic - Single Family	NO	NE	YES	
	2447 S Patton Ct	1957	Ranch	Ranch	Domestic - Single Family	NO	NE	NO	
	2447 S Tennyson St	1959	Ranch	Ranch	Domestic - Single Family	NO	NE	NO	
	2448 S Perry St	1956	Ranch	Ranch	Domestic - Single Family	NO	NE	NO	
	2449 S Perry St	1956	Ranch	Ranch	Domestic - Single Family	NO	NE	NO	
	2449 S Utica St	1957	Ranch	Ranch	Domestic - Single Family	NO	NE	NO	
	2450 S Meade St	1955	Contemporary	Ranch	Domestic - Single Family	NO	PD-C	NO	Cliff May
	2450 S Newton St	1955	Contemporary	Ranch	Domestic - Single Family	NO	PD-C	NO	Cliff May
	2450 S Osceola St	1956	Contemporary	Ranch	Domestic - Single Family	NO	PD-C	NO	Cliff May
	2450 S Quitman St	1956	Ranch	Ranch	Domestic - Single Family	NO	NE	NO	
	2450 S Wolff St	1955	Other	Split-Level	Domestic - Single Family	NO	NE	NO	
	2451 S Quitman St	1956	Ranch	Ranch	Domestic - Single Family	NO	NE	NO	
	2451 S Wolff St	1955	Other	Split-Level	Domestic - Single Family	NO	NE	NO	
	2452 S Xavier St	1955	Raised	Ranch	Domestic - Single Family	NO	NE	NO	
	2453 S Winona Ct	1955	Raised	Ranch	Domestic - Single Family	NO	NE	NO	
	2453 S Xavier St	1955	Raised	Ranch	Domestic - Single Family	NO	NE	NO	

	2454 S Yates St	1955	Raised	Ranch	Domestic - Single Family	NO	NE	NO	
	2455 S Meade St	1955	Contemporary	Ranch	Domestic - Single Family	NO	PD-C	NO	Cliff May
	2455 S Newton St	1955	Contemporary	Ranch	Domestic - Single Family	NO	PD-C	NO	Cliff May
	2455 S Osceola St	1958	Ranch	Ranch	Domestic - Single Family	NO	NE	NO	
	2455 S Yates St	1955	Raised	Ranch	Domestic - Single Family	NO	NE	NO	
	2456 S Patton Ct	1958	Ranch	Ranch	Domestic - Single Family	NO	NE	NO	
	2456 S Zenobia St	1955	Other	Split-Level	Domestic - Single Family	NO	NE	NO	
	2457 S Patton Ct	1957	Ranch	Ranch	Domestic - Single Family	NO	NE	NO	
	2457 S Zenobia St	1955	Other	Split-Level	Domestic - Single Family	NO	NE	NO	
	2458 S Perry St	1956	Ranch	Ranch	Domestic - Single Family	NO	NE	NO	
	2458 S Zurich Ct	1955	Raised	Ranch	Domestic - Single Family	NO	NE	NO	
	2459 S Perry St	1956	Ranch	Ranch	Domestic - Single Family	NO	NE	NO	
	2459 S Zurich Ct	1955	Raised	Ranch	Domestic - Single Family	NO	NE	NO	
	2460 S Lowell Blvd	1958	Ranch	Ranch	Domestic - Single Family	NO	PD-C	NO	Cliff May
	2460 S Meade St	1956	Contemporary	Ranch	Domestic - Single Family	NO	PD-C	NO	Cliff May
	2460 S Newton St	1955	Contemporary	Ranch	Domestic - Single Family	NO	NE	YES	
	2460 S Osceola St	1956	Contemporary	Ranch	Domestic - Single Family	NO	PD-C	NO	Cliff May
	2460 S Sheridan Blvd	1955	Raised	Ranch	Domestic - Single Family	NO	NE	NO	
	2462 S Winona Ct	1955	Contemporary	Ranch	Domestic - Single Family	NO	PD-C	NO	Carey Holiday
	2463 S Raleigh St	1956	Ranch	Ranch	Domestic - Single Family	NO	NE	NO	
	2464 S Stuart St	1956	Ranch	Ranch	Domestic - Single Family	NO	NE	YES	
	2465 S Lowell Blvd	1955	Contemporary	Ranch	Domestic - Single Family	NO	PD-C	NO	Cliff May
	2465 S Meade St	1956	Contemporary	Ranch	Domestic - Single Family	NO	PD-C	NO	Cliff May
	2465 S Newton St	1955	Contemporary	Ranch	Domestic - Single Family	NO	PD-NC	YES	Cliff May
	2465 S Osceola St	1957	Ranch	Ranch	Domestic - Single Family	NO	NE	NO	
	2465 S Stuart St	1956	Ranch	Ranch	Domestic - Single Family	NO	NE	NO	
	2466 S Patton Ct	1957	Ranch	Ranch	Domestic - Single Family	NO	NE	NO	
	2467 S Patton Ct	1957	Ranch	Ranch	Domestic - Single Family	NO	NE	NO	
	2468 S Perry St	1956	Ranch	Ranch	Domestic - Single Family	NO	NE	NO	
	2470 S Meade St	1955	Contemporary	Ranch	Domestic - Single Family	NO	PD-C	NO	Cliff May
	2470 S Newton St	1955	Contemporary	Ranch	Domestic - Single Family	NO	NE	NO	
	2470 S Osceola St	1956	Contemporary	Ranch	Domestic - Single Family	NO	PD-NC	YES	Cliff May
	2470 S Quitman St	1956	Ranch	Ranch	Domestic - Single Family	NO	NE	NO	

	2471 S Quitman St	1956	Ranch	Ranch	Domestic - Single Family	NO	NE	NO	
	2475 S Meade St	1955	Contemporary	Ranch	Domestic - Single Family	NO	PD-C	NO	Cliff May
	2475 S Newton St	1955	Contemporary	Ranch	Domestic - Single Family	NO	PD-NC	YES	Cliff May
	2479 S Perry St	1956	Ranch	Ranch	Domestic - Single Family	NO	NE	NO	
	2480 S Meade St	1955	Contemporary	Ranch	Domestic - Single Family	NO	PD-C	NO	Cliff May
	2480 S Newton St	1955	Ranch	Ranch	Domestic - Single Family	NO	NE	YES	
	2480 S Osceola St	1955	Contemporary	Ranch	Domestic - Single Family	NO	PD-C	NO	Cliff May
	2480 S Quitman St	1956	Ranch	Ranch	Domestic - Single Family	NO	NE	NO	
	2480 S Wolff St	1955	Other	Split-Level	Domestic - Single Family	NO	NE	NO	
	2481 S Vrain St	1956	Ranch	Ranch	Domestic - Single Family	NO	NE	NO	
	2481 S Wolff St	1955	Other	Split-Level	Domestic - Single Family	NO	NE	NO	
	2482 S Xavier St	1956	Other	Split-Level	Domestic - Single Family	NO	NE	YES	
	2483 S Winona Ct	1955	Other	Split-Level	Domestic - Single Family	NO	NE	NO	
	2483 S Xavier St	1955	Raised	Ranch	Domestic - Single Family	NO	NE	NO	
	2484 S Yates St	1955	Raised	Ranch	Domestic - Single Family	NO	NE	NO	
	2485 S Lowell Blvd	1957	Contemporary	Ranch	Domestic - Single Family	NO	PD-C	NO	Cliff May
	2485 S Osceola St	1957	Ranch	Ranch	Domestic - Single Family	NO	NE	NO	
	2485 S Yates St	1955	Other	Split-Level	Domestic - Single Family	NO	NE	NO	
	2486 S Patton Ct	1957	Ranch	Ranch	Domestic - Single Family	NO	NE	YES	
	2486 S Tennyson St	1956	Ranch	Ranch	Domestic - Single Family	NO	NE	NO	
	2486 S Zenobia St	1955	Raised	Ranch	Domestic - Single Family	NO	NE	NO	
	2487 S Patton Ct	1957	Ranch	Ranch	Domestic - Single Family	NO	NE	NO	
	2487 S Zenobia St	1955	Raised	Ranch	Domestic - Single Family	NO	NE	NO	
	2488 S Perry St	1956	Ranch	Ranch	Domestic - Single Family	NO	NE	YES	
	2488 S Zurich Ct	1955	Other	Split-Level	Domestic - Single Family	NO	NE	NO	
	2489 S Perry St	1956	Ranch	Ranch	Domestic - Single Family	NO	NE	NO	
	2489 S Utica St	1959	Ranch	Ranch	Domestic - Single Family	NO	NE	NO	
	2489 S Zurich Ct	1955	Raised	Ranch	Domestic - Single Family	NO	NE	NO	
	2490 S Lowell Blvd	1958	Ranch	Ranch	Domestic - Single Family	NO	NE	NO	
	2490 S Quitman St	1956	Ranch	Ranch	Domestic - Single Family	NO	NE	NO	
	2490 S Sheridan Blvd	1955	Raised	Ranch	Domestic - Single Family	NO	NE	NO	
	2491 S Quitman St	1956	Ranch	Ranch	Domestic - Single Family	NO	NE	YES	
	2492 S Winona Ct	1955	Contemporary	Ranch	Domestic - Single Family	NO	PD-C	NO	Carey Holiday

	2495 S Osceola St	1957	Ranch	Ranch	Domestic - Single Family	NO	NE	NO	
	2496 S Patton Ct	1958	Ranch	Ranch	Domestic - Single Family	NO	NE	NO	
	2497 S Patton Ct	1957	Ranch	Ranch	Domestic - Single Family	NO	NE	NO	
	2498 S Perry St	1956	Ranch	Ranch	Domestic - Single Family	NO	NE	NO	
	2500 S Lowell Blvd	1955	Contemporary	Ranch	Domestic - Single Family	NO	PD-C	NO	Cliff May
	2500 S Meade St	1955	Contemporary	Ranch	Domestic - Single Family	NO	PD-C	NO	Cliff May
	2500 S Newton St	1955	Contemporary	Ranch	Domestic - Single Family	NO	PD-C	NO	Cliff May
	2500 S Osceola St	1956	Contemporary	Ranch	Domestic - Single Family	NO	PD-C	NO	Cliff May
	2500 S Perry St	1957	Ranch	Ranch	Domestic - Single Family	NO	NE	NO	
	2500 S Vrain St	1956	Other	Split-Level	Domestic - Single Family	NO	NE	NO	
	2500 S Wolff St	1955	Other	Split-Level	Domestic - Single Family	NO	NE	NO	
	2501 S Perry St	1956	Ranch	Ranch	Domestic - Single Family	NO	NE	NO	
	2501 S Raleigh St	1956	Ranch	Ranch	Domestic - Single Family	NO	NE	NO	
	2501 S Vrain St	1955	Other	Split-Level	Domestic - Single Family	NO	NE	NO	
	2501 S Wolff St	1955	Other	Split-Level	Domestic - Single Family	NO	NE	NO	
	2502 S Quitman St	1956	Ranch	Ranch	Domestic - Single Family	NO	NE	NO	
	2502 S Stuart St	1956	Ranch	Ranch	Domestic - Single Family	NO	NE	NO	
	2502 S Winona Ct	1955	Other	Split-Level	Domestic - Single Family	NO	NE	NO	
	2502 S Xavier St	1955	Raised	Ranch	Domestic - Single Family	NO	NE	NO	
	2503 S Winona Ct	1955	Other	Split-Level	Domestic - Single Family	NO	NE	NO	
	2503 S Xavier St	1955	Other	Split-Level	Domestic - Single Family	NO	NE	NO	
	2504 S Raleigh St	1956	Modern Movement	Other	Civic - Fire Station	NO	NE	NO	
	2504 S Yates St	1955	Raised	Ranch	Domestic - Single Family	NO	NE	NO	
	2505 S Lowell Blvd	1954	Contemporary	Ranch	Domestic - Single Family	NO	PD-C	NO	Cliff May
	2505 S Meade St	1955	Contemporary	Ranch	Domestic - Single Family	NO	PD-C	NO	Cliff May
	2505 S Newton St	1955	Contemporary	Ranch	Domestic - Single Family	NO	PD-C	NO	Cliff May
	2505 S Raleigh St	1957	Ranch	Ranch	Domestic - Single Family	NO	NE	NO	
	2505 S Yates St	1955	Raised	Ranch	Domestic - Single Family	NO	NE	NO	
	2506 S Stuart St	1956	Ranch	Ranch	Domestic - Single Family	NO	NE	NO	
	2506 S Utica St	1956	Modern Movement	Other	Education - School	NO	NE	NO	
	2506 S Zenobia St	1955	Raised	Ranch	Domestic - Single Family	NO	NE	NO	

	2507 S Osceola St	1956	Ranch	Ranch	Domestic - Single Family	NO	NE	NO	
	2507 S Zenobia St	1955	Raised	Ranch	Domestic - Single Family	NO	NE	NO	
	2508 S Patton Ct	1956	Ranch	Ranch	Domestic - Single Family	NO	NE	NO	
	2508 S Quitman St	1957	Ranch	Ranch	Domestic - Single Family	NO	NE	NO	
	2508 S Zurich Ct	1955	Raised	Ranch	Domestic - Single Family	NO	NE	NO	
	2509 S Patton Ct	1958	Ranch	Ranch	Domestic - Single Family	NO	NE	NO	
	2509 S Quitman St	1957	Ranch	Ranch	Domestic - Single Family	NO	NE	NO	
	2509 S Utica St	1956	Raised	Ranch	Domestic - Single Family	NO	NE	NO	
5DV.11497	2510 S Lowell Blvd	1955	Contemporary	Ranch	Domestic - Single Family	NO	PD-C	NO	Cliff May
	2510 S Meade St	1955	Contemporary	Ranch	Domestic - Single Family	NO	PD-C	NO	Cliff May
	2510 S Newton St	1955	Other	Other	Domestic - Single Family	NO	NE	NO	
	2510 S Osceola St	1956	Contemporary	Ranch	Domestic - Single Family	NO	PD-C	NO	Cliff May
	2510 S Perry St	1957	Ranch	Ranch	Domestic - Single Family	NO	NE	NO	
5DV.11507	2510 S Vrain St	1956	Other	Split-Level	Domestic - Single Family	NO	NE	NO	
	2510 S Wolff St	1955	Other	Split-Level	Domestic - Single Family	NO	NE	NO	
	2511 S Perry St	1956	Ranch	Ranch	Domestic - Single Family	NO	NE	YES	
	2511 S Raleigh St	1957	Ranch	Ranch	Domestic - Single Family	NO	NE	NO	
	2511 S Vrain St	1955	Other	Split-Level	Domestic - Single Family	NO	NE	NO	
	2511 S Wolff St	1955	Raised	Ranch	Domestic - Single Family	NO	NE	NO	
	2512 S Quitman St	1957	Ranch	Ranch	Domestic - Single Family	NO	NE	YES	
	2512 S Stuart St	1956	Ranch	Ranch	Domestic - Single Family	NO	NE	NO	
	2512 S Winona Ct	1955	Other	Split-Level	Domestic - Single Family	NO	NE	NO	
	2512 S Xavier St	1956	Raised	Ranch	Domestic - Single Family	NO	NE	NO	
	2513 S Quitman St	1957	Ranch	Ranch	Domestic - Single Family	NO	NE	NO	
	2513 S Winona Ct	1955	Raised	Ranch	Domestic - Single Family	NO	NE	NO	
	2513 S Xavier St	1955	Other	Split-Level	Domestic - Single Family	NO	NE	NO	
	2514 S Raleigh St	1957	Ranch	Ranch	Domestic - Single Family	NO	NE	NO	
	2514 S Wolff St	1955	Raised	Ranch	Domestic - Single Family	NO	NE	NO	
	2514 S Yates St	1955	Other	Split-Level	Domestic - Single Family	NO	NE	NO	
	2515 S Lowell Blvd	1957	Contemporary	Ranch	Domestic - Single Family	NO	PD-C	NO	Cliff May
	2515 S Meade St	1955	Contemporary	Ranch	Domestic - Single Family	NO	PD-C	NO	Cliff May
	2515 S Newton St	1955	Contemporary	Ranch	Domestic - Single Family	NO	PD-C	NO	Cliff May
	2515 S Raleigh St	1958	Ranch	Ranch	Domestic - Single Family	NO	NE	NO	

	2515 S Utica St	1956	Raised	Ranch	Domestic - Single Family	NO	NE	NO	
	2515 S Yates St	1955	Raised	Ranch	Domestic - Single Family	NO	NE	NO	
	2516 S Stuart St	1957	Ranch	Ranch	Domestic - Single Family	NO	NE	NO	
	2516 S Zenobia St	1955	Raised	Ranch	Domestic - Single Family	NO	NE	NO	
	2517 S Osceola St	1956	Ranch	Ranch	Domestic - Single Family	NO	NE	NO	
	2518 S Patton Ct	1956	Other	Other	Domestic - Single Family	NO	NE	YES	
	2519 S Patton Ct	1958	Ranch	Ranch	Domestic - Single Family	NO	NE	YES	
	2519 S Utica St	1956	Raised	Ranch	Domestic - Single Family	NO	NE	NO	
	2520 S Lowell Blvd	1955	Contemporary	Ranch	Domestic - Single Family	NO	PD-C	NO	Cliff May
	2520 S Meade St	1955	Contemporary	Ranch	Domestic - Single Family	NO	PD-C	NO	Cliff May
	2520 S Newton St	1955	Ranch	Ranch	Domestic - Single Family	NO	NE	YES	
	2520 S Osceola St	1956	Contemporary	Ranch	Domestic - Single Family	NO	PD-NC	YES	Cliff May
	2520 S Perry St	1957	Ranch	Ranch	Domestic - Single Family	NO	NE	NO	
	2520 S Raleigh St	1957	Ranch	Ranch	Domestic - Single Family	NO	NE	NO	
	2520 S Vrain St	1956	Raised	Ranch	Domestic - Single Family	NO	NE	NO	
	2520 S Wolff St	1955	Raised	Ranch	Domestic - Single Family	NO	NE	NO	
	2521 S Perry St	1956	Ranch	Ranch	Domestic - Single Family	NO	NE	NO	
	2521 S Raleigh St	1957	Ranch	Ranch	Domestic - Single Family	NO	NE	NO	
	2521 S Vrain St	1955	Ranch	Ranch	Domestic - Single Family	NO	NE	NO	
	2521 S Wolff St	1955	Other	Split-Level	Domestic - Single Family	NO	NE	NO	
	2522 S Quitman St	1957	Ranch	Ranch	Domestic - Single Family	NO	NE	NO	
	2522 S Stuart St	1957	Ranch	Ranch	Domestic - Single Family	NO	NE	NO	
	2522 S Winona Ct	1955	Raised	Ranch	Domestic - Single Family	NO	NE	NO	
	2522 S Xavier St	1955	Raised	Ranch	Domestic - Single Family	NO	NE	NO	
	2523 S Quitman St	1957	Ranch	ranch	Domestic - Single Family	NO	NE	NO	
	2523 S Winona Ct	1955	Raised	Ranch	Domestic - Single Family	NO	NE	NO	
	2523 S Xavier St	1955	Raised	Ranch	Domestic - Single Family	NO	NE	NO	
	2524 S Raleigh St	1957	Ranch	Ranch	Domestic - Single Family	NO	NE	NO	
5DV.11508	2524 S Vrain St	1956	Raised	Ranch	Domestic - Single Family	NO	NE	NO	
	2524 S Yates St	1955	Raised	Ranch	Domestic - Single Family	NO	NE	NO	
	2525 S Lowell Blvd	1954	Contemporary	Ranch	Domestic - Single Family	NO	PD-C	NO	Cliff May
	2525 S Meade St	1955	Contemporary	Ranch	Domestic - Single Family	NO	PD-C	NO	Cliff May
	2525 S Newton St	1955	Contemporary	Ranch	Domestic - Single Family	NO	PD-NC	YES	Cliff May

	2525 S Raleigh St	1957	Ranch	Ranch	Domestic - Single Family	NO	NE	NO	
	2525 S Tennyson Way	1957	Ranch	Ranch	Domestic - Single Family	NO	NE	NO	
	2525 S Utica St	1956	Raised	Ranch	Domestic - Single Family	NO	NE	NO	
	2525 S Vrain St	1955	Ranch	Ranch	Domestic - Single Family	NO	NE	YES	
	2525 S Wolff St	1955	Raised	Ranch	Domestic - Single Family	NO	NE	NO	
	2525 S Yates St	1955	Raised	Ranch	Domestic - Single Family	NO	NE	NO	
	2526 S Stuart St	1957	Ranch	Ranch	Domestic - Single Family	NO	NE	YES	
	2526 S Winona Ct	1955	Raised	Ranch	Domestic - Single Family	NO	NE	NO	
	2526 S Xavier St	1955	Raised	Ranch	Domestic - Single Family	NO	NE	NO	
	2526 S Zenobia St	1955	Raised	Ranch	Domestic - Single Family	NO	NE	NO	
	2527 S Osceola St	1956	Ranch	Ranch	Domestic - Single Family	NO	NE	NO	
	2527 S Winona Ct	1955	Raised	Ranch	Domestic - Single Family	NO	NE	NO	
	2527 S Zenobia St	1955	Raised	Ranch	Domestic - Single Family	NO	NE	NO	
	2528 S Patton Ct	1956	Ranch	Ranch	Domestic - Single Family	NO	NE	NO	
	2528 S Zurich Ct	1955	Raised	Ranch	Domestic - Single Family	NO	NE	NO	
	2529 S Patton Ct	1958	Ranch	Ranch	Domestic - Single Family	NO	NE	YES	
	2529 S Tennyson Way	1957	Ranch	Ranch	Domestic - Single Family	NO	NE	NO	
	2529 S Utica St	1956	Raised	Ranch	Domestic - Single Family	NO	NE	NO	
	2530 S Lowell Blvd	1955	Contemporary	Other	Domestic - Single Family	NO	PD-NC	YES	Cliff May
	2530 S Meade St	1955	Contemporary	Ranch	Domestic - Single Family	NO	PD-C	NO	Cliff May
	2530 S Newton St	1955	Contemporary	Ranch	Domestic - Single Family	NO	PD-C	NO	Cliff May
	2530 S Osceola St	1956	Contemporary	Ranch	Domestic - Single Family	NO	PD-NC	YES	Cliff May
	2530 S Perry St	1957	Ranch	Ranch	Domestic - Single Family	NO	NE	NO	
	2530 S Tennyson Way	1957	Ranch	Ranch	Domestic - Single Family	NO	NE	NO	
	2530 S Vrain St	1955	Raised	Ranch	Domestic - Single Family	NO	NE	NO	
	2530 S Wolff St	1955	Raised	Ranch	Domestic - Single Family	NO	NE	NO	
	2531 S Perry St	1956	Ranch	Ranch	Domestic - Single Family	NO	NE	NO	
	2531 S Vrain St	1955	Other	Split-Level	Domestic - Single Family	NO	NE	NO	
	2531 S Wolff St	1955	Other	Split-Level	Domestic - Single Family	NO	NE	NO	
	2532 S Quitman St	1956	Ranch	Ranch	Domestic - Single Family	NO	NE	NO	
	2532 S Stuart St	1957	Ranch	Ranch	Domestic - Single Family	NO	NE	NO	
	2532 S Winona Ct	1955	Raised	Ranch	Domestic - Single Family	NO	NE	NO	
	2532 S Xavier St	1955	Raised	Ranch	Domestic - Single Family	NO	NE	NO	

	2533 S Quitman St	1957	Ranch	Ranch	Domestic - Single Family	NO	NE	NO	
	2533 S Winona Ct	1955	Raised	Ranch	Domestic - Single Family	NO	NE	NO	
	2533 S Xavier St	1955	Raised	Ranch	Domestic - Single Family	NO	NE	NO	
	2534 S Raleigh St	1957	Ranch	Ranch	Domestic - Single Family	NO	NE	NO	
	2534 S Vrain St	1955	Raised	Ranch	Domestic - Single Family	NO	NE	NO	
	2534 S Wolff St	1955	Raised	Ranch	Domestic - Single Family	NO	NE	NO	
	2534 S Yates St	1955	Raised	Ranch	Domestic - Single Family	NO	NE	NO	
5DV.11503	2535 S Lowell Blvd	1955	Contemporary	Ranch	Domestic - Single Family	NO	PD-C	NO	Cliff May
	2535 S Meade St	1955	Contemporary	Ranch	Domestic - Single Family	NO	PD-C	NO	Cliff May
	2535 S Newton St	1955	Contemporary	Ranch	Domestic - Single Family	NO	PD-C	NO	Cliff May
	2535 S Raleigh St	1957	Ranch	Ranch	Domestic - Single Family	NO	NE	NO	
	2535 S Tennyson Way	1957	Ranch	Ranch	Domestic - Single Family	NO	NE	NO	
	2535 S Utica St	1956	Other	Split-Level	Domestic - Single Family	NO	NE	NO	
	2535 S Yates St	1955	Other	Split-Level	Domestic - Single Family	NO	NE	NO	
	2536 S Stuart St	1957	Ranch	Ranch	Domestic - Single Family	NO	NE	NO	
	2536 S Winona Ct	1955	Raised	Ranch	Domestic - Single Family	NO	NE	NO	
	2536 S Zenobia St	1955	Raised	Ranch	Domestic - Single Family	NO	NE	NO	
	2537 S Osceola St	1956	Ranch	Ranch	Domestic - Single Family	NO	NE	YES	
	2537 S Vrain St	1955	Other	Split-Level	Domestic - Single Family	NO	NE	NO	
	2537 S Winona Ct	1955	Raised	Ranch	Domestic - Single Family	NO	NE	NO	
	2538 S Patton Ct	1956	Ranch	Ranch	Domestic - Single Family	NO	NE	NO	
	2539 S Patton Ct	1958	Ranch	Ranch	Domestic - Single Family	NO	NE	NO	
	2539 S Tennyson Way	1957	Ranch	Ranch	Domestic - Single Family	NO	NE	YES	
	2539 S Utica St	1956	Raised	Ranch	Domestic - Single Family	NO	NE	NO	
	2540 S Lowell Blvd	1955	Contemporary	Ranch	Domestic - Single Family	NO	PD-C	NO	Cliff May
	2540 S Meade St	1955	Contemporary	Ranch	Domestic - Single Family	NO	PD-NC	YES	Cliff May
	2540 S Newton St	1956	Contemporary	Ranch	Domestic - Single Family	NO	PD-C	NO	Cliff May
	2540 S Osceola St	1956	Contemporary	Ranch	Domestic - Single Family	NO	PD-C	NO	Cliff May
	2540 S Perry St	1957	Ranch	Ranch	Domestic - Single Family	NO	NE	NO	
	2540 S Vrain St	1956	Raised	Ranch	Domestic - Single Family	NO	NE	YES	
	2540 S Wolff St	1955	Raised	Ranch	Domestic - Single Family	NO	NE	NO	
	2541 S Perry St	1956	Ranch	Ranch	Domestic - Single Family	NO	NE	NO	
	2541 S Vrain St	1955	Raised	Ranch	Domestic - Single Family	NO	NE	NO	

	2541 S Wolff St	1955	Raised	Ranch	Domestic - Single Family	NO	NE	YES	
	2542 S Quitman St	1957	Ranch	Ranch	Domestic - Single Family	NO	NE	NO	
	2542 S Winona Ct	1955	Raised	Ranch	Domestic - Single Family	NO	NE	NO	
	2542 S Xavier St	1955	Raised	Ranch	Domestic - Single Family	NO	NE	NO	
	2543 S Osceola St	1956	Ranch	Ranch	Domestic - Single Family	NO	NE	NO	
	2543 S Quitman St	1957	Ranch	Ranch	Domestic - Single Family	NO	NE	NO	
	2543 S Winona Ct	1955	Raised	Ranch	Domestic - Single Family	NO	NE	NO	
	2543 S Xavier St	1955	Raised	Ranch	Domestic - Single Family	NO	NE	NO	
	2544 S Patton Ct	1956	Ranch	Ranch	Domestic - Single Family	NO	NE	NO	
	2544 S Raleigh St	1957	Ranch	Ranch	Domestic - Single Family	NO	NE	NO	
	2544 S Vrain St	1956	Raised	Ranch	Domestic - Single Family	NO	NE	NO	
	2544 S Yates St	1955	Raised	Ranch	Domestic - Single Family	NO	NE	NO	
5DV.11498	2545 S Lowell Blvd	1955	Contemporary	Ranch	Domestic - Single Family	NO	PD-C	NO	Cliff May
	2545 S Meade St	1955	Contemporary	Ranch	Domestic - Single Family	NO	PD-C	NO	Cliff May
	2545 S Newton St	1955	Contemporary	Ranch	Domestic - Single Family	NO	PD-NC	YES	Cliff May
	2545 S Patton Ct	1958	Ranch	Ranch	Domestic - Single Family	NO	NE	NO	
	2545 S Raleigh St	1957	Ranch	Ranch	Domestic - Single Family	NO	NE	NO	
	2545 S Tennyson Way	1956	Other	Split-Level	Domestic - Single Family	NO	NE	NO	
	2545 S Utica St	1956	Raised	Ranch	Domestic - Single Family	NO	NE	NO	
	2546 S Stuart St	1957	Ranch	Ranch	Domestic - Single Family	NO	NE	NO	
	2546 S Winona Ct	1955	Raised	Ranch	Domestic - Single Family	NO	NE	NO	
	2547 S Osceola St	1956	Ranch	Ranch	Domestic - Single Family	NO	NE	NO	
	2547 S Vrain St	1955	Raised	Ranch	Domestic - Single Family	NO	NE	NO	
	2547 S Winona Ct	1956	Other	Split-Level	Domestic - Single Family	NO	NE	NO	
	2547 S Zenobia St	1955	Raised	Ranch	Domestic - Single Family	NO	NE	NO	
	2548 S Patton Ct	1956	Ranch	Ranch	Domestic - Single Family	NO	NE	YES	
	2548 S Tennyson Way	1957	Ranch	Ranch	Domestic - Single Family	NO	NE	NO	
	2548 S Zurich Ct	1955	Raised	Ranch	Domestic - Single Family	NO	NE	NO	
	2549 S Patton Ct	1957	Ranch	Ranch	Domestic - Single Family	NO	NE	NO	
	2549 S Tennyson Way	1956	Raised	Ranch	Domestic - Single Family	NO	NE	NO	
	2549 S Utica St	1956	Raised	Ranch	Domestic - Single Family	NO	NE	NO	
	2550 S Lowell Blvd	1955	Contemporary	Ranch	Domestic - Single Family	NO	PD-C	NO	Cliff May
	2550 S Meade St	1955	Other	Other	Domestic - Single Family	NO	NE	YES	

5DV.11499	2550 S Newton St	1956	Contemporary	Ranch	Domestic - Single Family	NO	PD-C	NO	Cliff May
	2550 S Osceola St	1956	Contemporary	Ranch	Domestic - Single Family	NO	PD-C	NO	Cliff May
	2550 S Perry St	1957	Ranch	Ranch	Domestic - Single Family	NO	NE	NO	
	2550 S Raleigh St	1957	Ranch	Ranch	Domestic - Single Family	NO	NE	NO	
	2550 S Sheridan Blvd	1966	Other	Other	Commercial	NO	NE	NO	
	2550 S Vrain St	1956	Raised	Ranch	Domestic - Single Family	NO	NE	NO	
	2550 S Wolff St	1955	Ranch	Ranch	Domestic - Single Family	NO	NE	NO	
	2551 S Perry St	1956	Ranch	Ranch	Domestic - Single Family	NO	NE	NO	
	2551 S Raleigh St	1957	Ranch	Ranch	Domestic - Single Family	NO	NE	NO	
	2551 S Vrain St	1955	Raised	Ranch	Domestic - Single Family	NO	NE	NO	
	2551 S Wolff St	1955	Raised	Ranch	Domestic - Single Family	NO	NE	NO	
	2552 S Quitman St	1956	Ranch	Ranch	Domestic - Single Family	NO	NE	NO	
	2552 S Stuart St	1957	Ranch	Ranch	Domestic - Single Family	NO	NE	NO	
	2552 S Winona Ct	1955	Raised	Ranch	Domestic - Single Family	NO	NE	NO	
	2552 S Xavier St	1955	Raised	Ranch	Domestic - Single Family	NO	NE	NO	
	2553 S Quitman St	1957	Ranch	Ranch	Domestic - Single Family	NO	NE	NO	
	2553 S Stuart St	1957	Ranch	Ranch	Domestic - Single Family	NO	NE	NO	
	2553 S Winona Ct	1955	Raised	Ranch	Domestic - Single Family	NO	NE	NO	
	2553 S Xavier St	1955	Raised	Ranch	Domestic - Single Family	NO	NE	NO	
	2554 S Raleigh St	1957	Ranch	Ranch	Domestic - Single Family	NO	NE	NO	
	2554 S Tennyson Way	1957	Ranch	Ranch	Domestic - Single Family	NO	NE	NO	
	2554 S Vrain St	1956	Other	Split-Level	Domestic - Single Family	NO	NE	NO	
	2554 S Wolff St	1955	Other	Split-Level	Domestic - Single Family	NO	NE	NO	
	2554 S Yates St	1955	Raised	Ranch	Domestic - Single Family	NO	NE	NO	
	2555 S Lowell Blvd	1955	Contemporary	Ranch	Domestic - Single Family	NO	PD-C	NO	Cliff May
	2555 S Meade St	1955	Contemporary	Ranch	Domestic - Single Family	NO	PD-C	NO	Cliff May
	2555 S Newton St	1956	Contemporary	Ranch	Domestic - Single Family	NO	PD-C	NO	Cliff May
	2555 S Raleigh St	1957	Ranch	Ranch	Domestic - Single Family	NO	NE	NO	
	2555 S Tennyson Way	1956	Raised	Ranch	Domestic - Single Family	NO	NE	NO	
	2555 S Utica St	1956	Other	Split-Level	Domestic - Single Family	NO	NE	NO	
	2555 S Wolff St	1955	Other	Split-Level	Domestic - Single Family	NO	NE	NO	
	2555 S Yates St	1955	Other	Split-Level	Domestic - Single Family	NO	NE	NO	
	2556 S Stuart St	1957	Ranch	Ranch	Domestic - Single Family	NO	NE	NO	

	2556 S Uno Way	1956	Raised	Ranch	Domestic - Single Family	NO	NE	NO	
	2556 S Winona Ct	1955	Raised	Ranch	Domestic - Single Family	NO	NE	NO	
	2556 S Xavier St	1955	Raised	Ranch	Domestic - Single Family	NO	NE	NO	
	2556 S Zenobia St	1955	Raised	Ranch	Domestic - Single Family	NO	NE	NO	
	2557 S Osceola St	1956	Ranch	Ranch	Domestic - Single Family	NO	NE	NO	
	2557 S Stuart St	1957	Ranch	Ranch	Domestic - Single Family	NO	NE	NO	
	2557 S Uno Way	1956	Raised	Ranch	Domestic - Single Family	NO	NE	NO	
	2557 S Vrain St	1955	Raised	Ranch	Domestic - Single Family	NO	NE	NO	
	2557 S Winona Ct	1955	Raised	Ranch	Domestic - Single Family	NO	NE	NO	
	2558 S Patton Ct	1956	Ranch	Ranch	Domestic - Single Family	NO	NE	NO	
	2558 S Tennyson Way	1957	Ranch	Ranch	Domestic - Single Family	NO	NE	NO	
	2559 S Patton Ct	1958	Ranch	Ranch	Domestic - Single Family	NO	NE	NO	
	2559 S Tennyson Way	1956	Raised	Ranch	Domestic - Single Family	NO	NE	NO	
	2559 S Utica St	1956	Raised	Ranch	Domestic - Single Family	NO	NE	NO	
5DV.11500	2560 S Lowell Blvd	1955	Contemporary	Ranch	Domestic - Single Family	NO	PD-C	NO	Cliff May
	2560 S Meade St	1956	Contemporary	Ranch	Domestic - Single Family	NO	PD-C	NO	Cliff May
	2560 S Newton St	1955	Other	Other	Domestic - Single Family	NO	NE	NO	
	2560 S Osceola St	1955	Contemporary	Ranch	Domestic - Single Family	NO	PD-C	NO	Cliff May
	2560 S Perry St	1957	Ranch	Ranch	Domestic - Single Family	NO	NE	NO	
	2560 S Vrain St	1956	Other	Split-Level	Domestic - Single Family	NO	NE	NO	
	2560 S Wolff St	1955	Raised	Ranch	Domestic - Single Family	NO	NE	NO	
	2561 S Perry St	1956	Ranch	Ranch	Domestic - Single Family	NO	NE	YES	
	2561 S Vrain St	1955	Raised	Ranch	Domestic - Single Family	NO	NE	NO	
	2561 S Wolff St	1955	Raised	Ranch	Domestic - Single Family	NO	NE	NO	
	2562 S Quitman St	1956	Other	Other	Domestic - Single Family	NO	NE	NO	
	2562 S Uno Way	1956	Raised	Ranch	Domestic - Single Family	NO	NE	NO	
	2562 S Winona Ct	1955	Raised	Ranch	Domestic - Single Family	NO	NE	NO	
	2562 S Xavier St	1955	Raised	Ranch	Domestic - Single Family	NO	NE	NO	
	2563 S Quitman St	1957	Ranch	Ranch	Domestic - Single Family	NO	NE	NO	
	2563 S Winona Ct	1955	Raised	Ranch	Domestic - Single Family	NO	NE	NO	
	2563 S Xavier St	1955	Raised	Ranch	Domestic - Single Family	NO	NE	NO	
	2564 S Raleigh St	1957	Ranch	Ranch	Domestic - Single Family	NO	NE	YES	
	2564 S Vrain St	1955	Raised	Ranch	Domestic - Single Family	NO	NE	NO	

	2564 S Yates St	1955	Other	Split-Level	Domestic - Single Family	NO	NE	NO	
	2565 S Lowell Blvd	1955	Contemporary	Ranch	Domestic - Single Family	NO	PD-C	NO	Cliff May
	2565 S Meade St	1955	Other	Other	Domestic - Single Family	NO	NE	YES	
	2565 S Newton St	1956	Other	Other	Domestic - Single Family	NO	NE	NO	
	2565 S Raleigh St	1957	Ranch	Ranch	Domestic - Single Family	NO	NE	NO	
	2565 S Utica St	1956	Raised	Ranch	Domestic - Single Family	NO	NE	YES	
	2565 S Yates St	1955	Other	Split-Level	Domestic - Single Family	NO	NE	NO	
	2566 S Stuart St	1957	Ranch	Ranch	Domestic - Single Family	NO	NE	NO	
	2566 S Uno Way	1956	Raised	Ranch	Domestic - Single Family	NO	NE	NO	
	2566 S Winona Ct	1955	Raised	Ranch	Domestic - Single Family	NO	NE	NO	
	2567 S Osceola St	1956	Ranch	Ranch	Domestic - Single Family	NO	NE	NO	
	2567 S Stuart St	1957	Ranch	Ranch	Domestic - Single Family	NO	NE	NO	
	2567 S Uno Way	1956	Other	Split-Level	Domestic - Single Family	NO	NE	NO	
	2567 S Vrain St	1955	Other	Split-Level	Domestic - Single Family	NO	NE	NO	
	2567 S Winona Ct	1955	Raised	Ranch	Domestic - Single Family	NO	NE	NO	
	2567 S Zenobia St	1955	Other	Split-Level	Domestic - Single Family	NO	NE	NO	
	2568 S Patton Ct	1956	Ranch	Ranch	Domestic - Single Family	NO	NE	NO	
	2568 S Tennyson Way	1957	Ranch	Ranch	Domestic - Single Family	NO	NE	NO	
	2568 S Zurich Ct	1955	Raised	Ranch	Domestic - Single Family	NO	NE	NO	
	2569 S Patton Ct	1958	Ranch	Ranch	Domestic - Single Family	NO	NE	YES	
	2569 S Tennyson Way	1956	Raised	Ranch	Domestic - Single Family	NO	NE	NO	
	2569 S Utica St	1956	Raised	Ranch	Domestic - Single Family	NO	NE	NO	
	2570 S Lowell Blvd	1955	Contemporary	Ranch	Domestic - Single Family	NO	PD-C	NO	Cliff May
	2570 S Meade St	1955	Contemporary	Ranch	Domestic - Single Family	NO	PD-C	NO	Cliff May
	2570 S Newton St	1956	Contemporary	Ranch	Domestic - Single Family	NO	PD-C	NO	Cliff May
	2570 S Osceola St	1956	Contemporary	Ranch	Domestic - Single Family	NO	PD-C	NO	Cliff May
	2570 S Perry St	1957	Ranch	Ranch	Domestic - Single Family	NO	NE	NO	
	2570 S Vrain St	1955	Raised	Ranch	Domestic - Single Family	NO	NE	NO	
	2570 S Wolff St	1955	Raised	Ranch	Domestic - Single Family	NO	NE	NO	
	2571 S Perry St	1956	Ranch	Ranch	Domestic - Single Family	NO	NE	NO	
	2571 S Vrain St	1955	Other	Split-Level	Domestic - Single Family	NO	NE	NO	
	2571 S Wolff St	1955	Other	Split-Level	Domestic - Single Family	NO	NE	NO	
	2572 S Quitman St	1956	Ranch	Ranch	Domestic - Single Family	NO	NE	NO	

	2572 S Uno Way	1956	Other	Split-Level	Domestic - Single Family	NO	NE	NO	
	2572 S Winona Ct	1955	Other	Split-Level	Domestic - Single Family	NO	NE	NO	
	2572 S Xavier St	1955	Raised	Ranch	Domestic - Single Family	NO	NE	NO	
	2573 S Quitman St	1957	Ranch	Ranch	Domestic - Single Family	NO	NE	NO	
	2573 S Winona Ct	1955	Raised	Ranch	Domestic - Single Family	NO	NE	NO	
	2573 S Xavier St	1955	Raised	Ranch	Domestic - Single Family	NO	NE	NO	
	2574 S Raleigh St	1957	Ranch	Ranch	Domestic - Single Family	NO	NE	NO	
	2574 S Vrain St	1956	Other	Split-Level	Domestic - Single Family	NO	NE	NO	
	2574 S Wolff St	1955	Raised	Ranch	Domestic - Single Family	NO	NE	NO	
	2574 S Yates St	1955	Raised	Ranch	Domestic - Single Family	NO	NE	NO	
	2575 S Lowell Blvd	1958	Ranch	Ranch	Domestic - Single Family	NO	NE	NO	
	2575 S Meade St	1955	Contemporary	Ranch	Domestic - Single Family	NO	PD-C	NO	Cliff May
	2575 S Newton St	1956	Contemporary	Ranch	Domestic - Single Family	NO	PD-C	NO	Cliff May
	2575 S Raleigh St	1957	Ranch	Ranch	Domestic - Single Family	NO	NE	NO	
	2575 S Utica St	1956	Raised	Ranch	Domestic - Single Family	NO	NE	NO	
	2575 S Yates St	1955	Raised	Ranch	Domestic - Single Family	NO	NE	NO	
	2576 S Stuart St	1957	Ranch	Ranch	Domestic - Single Family	NO	NE	NO	
	2576 S Uno Way	1956	Raised	Ranch	Domestic - Single Family	NO	NE	NO	
	2576 S Winona Ct	1955	Other	Split-Level	Domestic - Single Family	NO	NE	NO	
	2576 S Zenobia St	1955	Raised	Ranch	Domestic - Single Family	NO	NE	NO	
	2577 S Osceola St	1956	Ranch	Ranch	Domestic - Single Family	NO	NE	NO	
	2577 S Stuart St	1957	Ranch	Ranch	Domestic - Single Family	NO	NE	NO	
	2577 S Uno Way	1956	Raised	Ranch	Domestic - Single Family	NO	NE	NO	
	2577 S Vrain St	1955	Raised	Ranch	Domestic - Single Family	NO	NE	NO	
	2578 S Patton Ct	1956	Ranch	Ranch	Domestic - Single Family	NO	NE	NO	
	2578 S Tennyson Way	1957	Ranch	Ranch	Domestic - Single Family	NO	NE	NO	
	2579 S Patton Ct	1958	Ranch	Ranch	Domestic - Single Family	NO	NE	NO	
	2579 S Tennyson Way	1956	Raised	Ranch	Domestic - Single Family	NO	NE	NO	
	2579 S Utica St	1956	Other	Split-Level	Domestic - Single Family	NO	NE	NO	
	2580 S Lowell Blvd	1955	Contemporary	Ranch	Domestic - Single Family	NO	PD-C	NO	Cliff May
	2580 S Meade St	1955	Contemporary	Ranch	Domestic - Single Family	NO	PD-C	NO	Cliff May
	2580 S Newton St	1956	Contemporary	Ranch	Domestic - Single Family	NO	PD-C	NO	Cliff May
	2580 S Osceola St	1956	Contemporary	Ranch	Domestic - Single Family	NO	PD-C	NO	Cliff May

	2580 S Perry St	1957	Ranch	Ranch	Domestic - Single Family	NO	NE	NO	
	2580 S Vrain St	1956	Raised	Ranch	Domestic - Single Family	NO	NE	NO	
	2580 S Wolff St	1955	Raised	Ranch	Domestic - Single Family	NO	NE	NO	
	2581 S Perry St	1956	Ranch	Ranch	Domestic - Single Family	NO	NE	NO	
	2581 S Vrain St	1955	Raised	Ranch	Domestic - Single Family	NO	NE	NO	
	2581 S Wolff St	1955	Raised	Ranch	Domestic - Single Family	NO	NE	NO	
	2582 S Quitman St	1956	Ranch	Ranch	Domestic - Single Family	NO	NE	NO	
	2582 S Uno Way	1956	Raised	Ranch	Domestic - Single Family	NO	NE	NO	
	2582 S Winona Ct	1955	Raised	Ranch	Domestic - Single Family	NO	NE	NO	
	2582 S Xavier St	1955	Raised	Ranch	Domestic - Single Family	NO	NE	NO	
	2583 S Quitman St	1957	Ranch	Ranch	Domestic - Single Family	NO	NE	NO	
	2583 S Winona Ct	1955	Other	Split-Level	Domestic - Single Family	NO	NE	NO	
	2583 S Xavier St	1955	Raised	Ranch	Domestic - Single Family	NO	NE	NO	
	2584 S Raleigh St	1957	Ranch	Ranch	Domestic - Single Family	NO	NE	NO	
	2584 S Utica St	1956	Raised	Ranch	Domestic - Single Family	NO	NE	NO	
	2584 S Vrain St	1956	Other	Split-Level	Domestic - Single Family	NO	NE	NO	
	2584 S Yates St	1955	Raised	Ranch	Domestic - Single Family	NO	NE	NO	
	2585 S Lowell Blvd	1958	Ranch	Ranch	Domestic - Single Family	NO	NE	NO	
	2585 S Meade St	1955	Contemporary	Ranch	Domestic - Single Family	NO	PD-C	NO	Cliff May
	2585 S Newton St	1955	Contemporary	Ranch	Domestic - Single Family	NO	PD-C	NO	Cliff May
	2585 S Raleigh St	1957	Ranch	Ranch	Domestic - Single Family	NO	NE	NO	
	2585 S Utica St	1956	Raised	Ranch	Domestic - Single Family	NO	NE	NO	
	2585 S Wolff St	1955	Raised	Ranch	Domestic - Single Family	NO	NE	NO	
	2586 S Stuart St	1958	Ranch	Ranch	Domestic - Single Family	NO	NE	NO	
	2586 S Uno Way	1956	Raised	Ranch	Domestic - Single Family	NO	NE	NO	
	2586 S Winona Ct	1955	Raised	Ranch	Domestic - Single Family	NO	NE	NO	
	2587 S Osceola St	1956	Ranch	Ranch	Domestic - Single Family	NO	NE	NO	
	2587 S Stuart St	1957	Ranch	Ranch	Domestic - Single Family	NO	NE	YES	
	2587 S Uno Way	1956	Other	Split-Level	Domestic - Single Family	NO	NE	NO	
	2587 S Vrain St	1955	Raised	Ranch	Domestic - Single Family	NO	NE	NO	
	2587 S Winona Ct	1955	Raised	Ranch	Domestic - Single Family	NO	NE	NO	
	2587 S Zenobia St	1955	Other	Split-Level	Domestic - Single Family	NO	NE	NO	
	2588 S Patton Ct	1956	Ranch	Ranch	Domestic - Single Family	NO	NE	NO	

	2588 S Tennyson Way	1957	Ranch	Ranch	Domestic - Single Family	NO	NE	NO	
	2588 S Utica St	1956	Raised	Ranch	Domestic - Single Family	NO	NE	NO	
	2588 S Zurich Ct	1955	Raised	Ranch	Domestic - Single Family	NO	NE	NO	
	2589 S Patton Ct	1958	Ranch	Ranch	Domestic - Single Family	NO	NE	NO	
	2589 S Tennyson Way	1956	Raised	Ranch	Domestic - Single Family	NO	NE	NO	
	2589 S Utica St	1956	Raised	Ranch	Domestic - Single Family	NO	NE	NO	
	2590 S Lowell Blvd	1955	Contemporary	Ranch	Domestic - Single Family	NO	PD-C	NO	Cliff May
	2590 S Meade St	1955	Contemporary	Ranch	Domestic - Single Family	NO	PD-C	NO	Cliff May
	2590 S Newton St	1955	Contemporary	Ranch	Domestic - Single Family	NO	PD-C	NO	Cliff May
	2590 S Osceola St	1956	Ranch	Ranch	Domestic - Single Family	NO	NE	YES	
	2590 S Perry St	1957	Ranch	Ranch	Domestic - Single Family	NO	NE	NO	
	2590 S Raleigh St	1957	Ranch	Ranch	Domestic - Single Family	NO	NE	NO	
	2590 S Vrain St	1956	Raised	Ranch	Domestic - Single Family	NO	NE	NO	
	2590 S Wolff St	1955	Raised	Ranch	Domestic - Single Family	NO	NE	NO	
	2591 S Lowell Blvd	1958	Ranch	Ranch	Domestic - Single Family	NO	NE	NO	
	2591 S Meade St	1955	Contemporary	Ranch	Domestic - Single Family	NO	PD-C	NO	Cliff May
	2591 S Newton St	1955	Contemporary	Ranch	Domestic - Single Family	NO	PD-C	NO	Cliff May
	2591 S Perry St	1956	Ranch	Ranch	Domestic - Single Family	NO	NE	NO	
	2591 S Raleigh St	1957	Ranch	Ranch	Domestic - Single Family	NO	NE	NO	
	2591 S Vrain St	1955	Raised	Ranch	Domestic - Single Family	NO	NE	NO	
	2591 S Wolff St	1955	Other	Split-Level	Domestic - Single Family	NO	NE	NO	
	2592 S Quitman St	1957	Ranch	Ranch	Domestic - Single Family	NO	NE	NO	
	2592 S Stuart St	1957	Ranch	Ranch	Domestic - Single Family	NO	NE	NO	
	2592 S Uno Way	1956	Raised	Ranch	Domestic - Single Family	NO	NE	NO	
	2592 S Winona Ct	1955	Other	Split-Level	Domestic - Single Family	NO	NE	NO	
	2592 S Xavier St	1955	Raised	Ranch	Domestic - Single Family	NO	NE	NO	
	2593 S Quitman St	1957	Ranch	Ranch	Domestic - Single Family	NO	NE	NO	
	2593 S Stuart St	1957	Ranch	Ranch	Domestic - Single Family	NO	NE	NO	
	2593 S Winona Ct	1955	Raised	Ranch	Domestic - Single Family	NO	NE	NO	
	2593 S Xavier St	1955	Raised	Ranch	Domestic - Single Family	NO	NE	NO	
	2594 S Tennyson Way	1957	Ranch	Ranch	Domestic - Single Family	NO	NE	NO	
	2594 S Vrain St	1955	Raised	Ranch	Domestic - Single Family	NO	NE	NO	
	2594 S Wolff St	1955	Other	Split-Level	Domestic - Single Family	NO	NE	NO	

	2594 S Yates St	1955	Raised	Ranch	Domestic - Single Family	NO	NE	NO	
	2595 S Lowell Blvd	1958	Ranch	Ranch	Domestic - Single Family	NO	NE	NO	
	2595 S Meade St	1955	Contemporary	Ranch	Domestic - Single Family	NO	PD-C	NO	Cliff May
	2595 S Newton St	1955	Contemporary	Ranch	Domestic - Single Family	NO	PD-C	NO	Cliff May
	2595 S Tennyson Way	1956	Raised	Ranch	Domestic - Single Family	NO	NE	NO	
	2595 S Utica St	1956	Other	Split-Level	Domestic - Single Family	NO	NE	NO	
	2595 S Wolff St	1955	Other	Split-Level	Domestic - Single Family	NO	NE	NO	
	2595 S Yates St	1955	Other	Split-Level	Domestic - Single Family	NO	NE	NO	
	2596 S Lowell Blvd	1955	Contemporary	Ranch	Domestic - Single Family	NO	PD-C	NO	Cliff May
	2596 S Meade St	1955	Contemporary	Ranch	Domestic - Single Family	NO	PD-C	NO	Cliff May
	2596 S Newton St	1956	Contemporary	Ranch	Domestic - Single Family	NO	PD-C	NO	Cliff May
	2596 S Osceola St	1955	Contemporary	Ranch	Domestic - Single Family	NO	PD-C	NO	Cliff May
	2596 S Perry St	1957	Ranch	Ranch	Domestic - Single Family	NO	NE	NO	
	2596 S Uno Way	1956	Raised	Ranch	Domestic - Single Family	NO	NE	NO	
	2596 S Xavier St	1955	Raised	Ranch	Domestic - Single Family	NO	NE	NO	
	2596 S Zenobia St	1955	Raised	Ranch	Domestic - Single Family	NO	NE	NO	
	2597 S Osceola St	1956	Ranch	Ranch	Domestic - Single Family	NO	NE	NO	
	2597 S Perry St	1957	Ranch	Ranch	Domestic - Single Family	NO	NE	NO	
	2597 S Uno Way	1956	Other	Split-Level	Domestic - Single Family	NO	NE	NO	
	2597 S Vrain St	1955	Raised	Ranch	Domestic - Single Family	NO	NE	NO	
	2597 S Xavier St	1955	Other	Split-Level	Domestic - Single Family	NO	NE	YES	
	2598 S Patton Ct	1957	Ranch	Ranch	Domestic - Single Family	NO	NE	NO	
	2598 S Quitman St	1957	Ranch	Ranch	Domestic - Single Family	NO	NE	YES	
	2598 S Utica St	1956	Raised	Ranch	Domestic - Single Family	NO	NE	NO	
	2599 S Patton Ct	1957	Ranch	Ranch	Domestic - Single Family	NO	NE	NO	
	2599 S Tennyson Way	1956	Other	Split-Level	Domestic - Single Family	NO	NE	NO	
	2600 S Perry St	1955	Contemporary	Ranch	Domestic - Single Family	NO	PD-NC	YES	Burns Modern Homes
	2600 S Sheridan Blvd	1966	Other	Other	Commercial	NO	NE	NO	
	2601 S Perry St	1956	Contemporary	Ranch	Domestic - Single Family	NO	PD-NC	YES	Burns Modern Homes
	2602 S Quitman St	1956	Contemporary	Ranch	Domestic - Single Family	NO	NE	YES	
	2603 S Quitman St	1956	Contemporary	Ranch	Domestic - Single Family	NO	NE	NO	

	2604 S Raleigh St	1956	Contemporary	Split-Level	Domestic - Single Family	NO	NE	NO	
	2605 S Wolff Way	1961	Ranch	Ranch	Domestic - Single Family	NO	NE	NO	
	2606 S Perry St	1955	Contemporary	Ranch	Domestic - Single Family	N	PD-C	NO	Burns Modern Homes
	2606 S Sheridan Blvd	1970	Other	Other	Religious - Church	NO	NE	NO	
	2607 S Osceola St	1955	Contemporary	Ranch	Domestic - Single Family	N	PD-C	NO	Burns Modern Homes
	2607 S Perry St	1956	Contemporary	Ranch	Domestic - Single Family	NO	PD-C	NO	Burns Modern Homes
	2608 S Patton Ct	1955	Contemporary	Ranch	Domestic - Single Family	N	PD-C	NO	Burns Modern Homes
	2608 S Quitman St	1956	Contemporary	Ranch	Domestic - Single Family	NO	NE	NO	
	2609 S Patton Ct	1955	Contemporary	Ranch	Domestic - Single Family	NO	PD-C	NO	Burns Modern Homes
	2609 S Quitman St	1956	Contemporary	Ranch	Domestic - Single Family	NO	NE	YES	
	2610 S Perry St	1955	Contemporary	Ranch	Domestic - Single Family	NO	PD-NC	YES	Burns Modern Homes
	2610 S Sheridan Blvd	1961	Ranch	Ranch	Domestic - Single Family	NO	NE	NO	
	2610 S Zurich Ct	1961	Other	Other	Domestic - Single Family	NO	NE	NO	
	2611 S Perry St	1956	Contemporary	Ranch	Domestic - Single Family	N	PD-C	NO	Burns Modern Homes
	2611 S Zurich Ct	1959	Ranch	Ranch	Domestic - Single Family	NO	NE	NO	
	2612 S Quitman St	1955	Contemporary	Ranch	Domestic - Single Family	NO	NE	NO	
	2613 S Osceola St	1956	Contemporary	Ranch	Domestic - Single Family	N	PD-C	NO	Burns Modern Homes
	2614 S Patton Ct	1955	Contemporary	Ranch	Domestic - Single Family	NO	PD-C	NO	Burns Modern Homes
5DV.11505	2614 S Raleigh St	1956	Contemporary	Split-Level	Domestic - Single Family	NO	NE	NO	
	2615 S Patton Ct	1955	Contemporary	Ranch	Domestic - Single Family	NO	PD-C	NO	Burns Modern Homes
	2615 S Raleigh St	1957	Ranch	Ranch	Domestic - Single Family	NO	NE	NO	
	2615 S Zurich Ct	1960	Ranch	Ranch	Domestic - Single Family	NO	NE	NO	
	2616 S Sheridan Blvd	1960	Ranch	Ranch	Domestic - Single Family	NO	NE	NO	
	2616 S Stuart Way	1957	Ranch	Ranch	Domestic - Single Family	NO	NE	YES	
	2617 S Osceola St	1955	Contemporary	Ranch	Domestic - Single Family	NO	PD-C	NO	Burns Modern Homes

	2617 S Stuart Way	1957	Ranch	Ranch	Domestic - Single Family	NO	NE	NO	
	2618 S Patton Ct	1955	Contemporary	Ranch	Domestic - Single Family	NO	PD-C	NO	Burns Modern Homes
	2618 S Tennyson Way	1957	Ranch	Ranch	Domestic - Single Family	NO	NE	NO	
	2619 S Patton Ct	1955	Contemporary	Ranch	Domestic - Single Family	NO	PD-C	NO	Burns Modern Homes
	2620 S Perry St	1955	Contemporary	Ranch	Domestic - Single Family	NO	PD-NC	YES	Burns Modern Homes
	2620 S Sheridan Blvd	1961	Ranch	Ranch	Domestic - Single Family	NO	NE	NO	
	2620 S Zurich Ct	1961	Contemporary	Ranch	Domestic - Single Family	NO	NE	NO	
	2621 S Perry St	1956	Contemporary	Ranch	Domestic - Single Family	NO	PD-C	NO	Burns Modern Homes
	2621 S Wolff Way	1962	Other	Other	Domestic - Single Family	NO	NE	YES	
	2621 S Zurich Ct	1959	Ranch	Ranch	Domestic - Single Family	NO	NE	NO	
	2622 S Quitman St	1956	Contemporary	Ranch	Domestic - Single Family	NO	NE	NO	
	2623 S Quitman St	1956	Contemporary	Split-Level	Domestic - Single Family	NO	NE	NO	
	2624 S Raleigh St	1956	Contemporary	Split-Level	Domestic - Single Family	NO	NE	NO	
	2625 S Raleigh St	1957	Ranch	Ranch	Domestic - Single Family	NO	NE	NO	
	2625 S Zurich Ct	1959	Ranch	Ranch	Domestic - Single Family	NO	NE	NO	
	2626 S Perry St	1955	Contemporary	Ranch	Domestic - Single Family	NO	NE	NO	
	2626 S Sheridan Blvd	1962	Ranch	Ranch	Domestic - Single Family	NO	NE	NO	
	2626 S Stuart Way	1957	Ranch	Ranch	Domestic - Single Family	NO	NE	YES	
	2627 S Osceola St	1955	Contemporary	Ranch	Domestic - Single Family	NO	PD-NC	YES	Burns Modern Homes
	2627 S Perry St	1956	Contemporary	Ranch	Domestic - Single Family	NO	PD-C	NO	Burns Modern Homes
	2627 S Stuart Way	1957	Ranch	Ranch	Domestic - Single Family	NO	NE	YES	
	2628 S Patton Ct	1955	Other	Other	Domestic - Single Family	NO	NE	YES	
	2628 S Quitman St	1956	Contemporary	Ranch	Domestic - Single Family	NO	NE	YES	
	2628 S Tennyson Way	1957	Ranch	Ranch	Domestic - Single Family	NO	NE	NO	
	2629 S Patton Ct	1955	Contemporary	Ranch	Domestic - Single Family	NO	PD-C	NO	Burns Modern Homes
	2629 S Quitman St	1956	Contemporary	Ranch	Domestic - Single Family	NO	NE	NO	
	2629 S Tennyson Way	1961	Ranch	Ranch	Domestic - Single Family	NO	NE	NO	
	2630 S Perry St	1955	Contemporary	Ranch	Domestic - Single Family	NO	PD-C	NO	Burns Modern

									Homes
	2630 S Raleigh St	1956	Contemporary	Split-Level	Domestic - Single Family	NO	NE	NO	
	2630 S Sheridan Blvd	1960	Ranch	Ranch	Domestic - Single Family	NO	NE	NO	
	2630 S Wolff Way	1959	Ranch	Ranch	Domestic - Single Family	NO	NE	NO	
	2630 S Zurich Ct	1959	Ranch	Ranch	Domestic - Single Family	NO	NE	NO	
	2631 S Perry St	1956	Contemporary	Ranch	Domestic - Single Family	NO	PD-C	NO	Burns Modern Homes
	2631 S Raleigh St	1957	Ranch	Ranch	Domestic - Single Family	NO	NE	NO	
	2631 S Wolff Way	1959	Ranch	Ranch	Domestic - Single Family	NO	NE	NO	
	2631 S Zurich Ct	1959	Ranch	Ranch	Domestic - Single Family	NO	NE	NO	
	2632 S Quitman St	1956	Contemporary	Ranch	Domestic - Single Family	NO	NE	NO	
	2632 S Stuart Way	1957	Ranch	Ranch	Domestic - Single Family	NO	NE	NO	
	2633 S Osceola St	1955	Contemporary	Split-Level	Domestic - Single Family	NO	PD-C	NO	Burns Modern Homes
	2633 S Quitman St	1956	Contemporary	Ranch	Domestic - Single Family	NO	NE	NO	
	2633 S Stuart Way	1957	Ranch	Ranch	Domestic - Single Family	NO	NE	NO	
	2633 S Tennyson Way	1961	Ranch	Ranch	Domestic - Single Family	NO	NE	NO	
	2634 S Patton Ct	1955	Contemporary	Ranch	Domestic - Single Family	NO	PD-C	NO	Burns Modern Homes
	2634 S Raleigh St	1956	Contemporary	Split-Level	Domestic - Single Family	NO	NE	NO	
	2634 S Tennyson Way	1957	Ranch	Ranch	Domestic - Single Family	NO	NE	NO	
	2634 S Zurich Ct	1960	Ranch	Ranch	Domestic - Single Family	NO	NE	NO	
	2635 S Patton Ct	1955	Contemporary	Ranch	Domestic - Single Family	NO	PD-C	NO	Burns Modern Homes
	2635 S Raleigh St	1957	Ranch	Ranch	Domestic - Single Family	NO	NE	NO	
	2635 S Zurich Ct	1958	Ranch	Ranch	Domestic - Single Family	NO	NE	NO	
	2636 S Sheridan Blvd	1960	Ranch	Ranch	Domestic - Single Family	NO	NE	NO	
	2636 S Stuart Way	1957	Ranch	Ranch	Domestic - Single Family	NO	NE	NO	
	2637 S Osceola St	1955	Ranch	Ranch	Domestic - Single Family	NO	NE	NO	
	2637 S Stuart Way	1958	Ranch	Ranch	Domestic - Single Family	NO	NE	NO	
	2637 S Tennyson Way	1961	Ranch	Ranch	Domestic - Single Family	NO	NE	NO	
	2638 S Patton Ct	1955	Contemporary	Ranch	Domestic - Single Family	NO	PD-NC	YES	Burns Modern Homes
	2638 S Tennyson Way	1957	Ranch	Ranch	Domestic - Single Family	NO	NE	NO	

	2639 S Patton Ct	1955	Contemporary	Ranch	Domestic - Single Family	NO	PD-NC	YES	Burns Modern Homes
	2640 S Perry St	1955	Contemporary	Ranch	Domestic - Single Family	NO	PD-NC	YES	Burns Modern Homes
	2640 S Sheridan Blvd	1960	Ranch	Ranch	Domestic - Single Family	NO	NE	NO	
	2640 S Wolff Way	1960	Other	Other	Domestic - Single Family	NO	NE	YES	
	2640 S Zurich Ct	1963	Other	Other	Domestic - Single Family	NO	NE	NO	
	2641 S Perry St	1956	Contemporary	Ranch	Domestic - Single Family	NO	PD-C	NO	Burns Modern Homes
	2641 S Tennyson Way	1961	Ranch	Ranch	Domestic - Single Family	NO	NE	NO	
	2641 S Wolff Way	1960	Other	Other	Domestic - Single Family	NO	NE	NO	
	2641 S Zurich Ct	1959	Ranch	Ranch	Domestic - Single Family	NO	NE	NO	
	2642 S Quitman St	1956	Ranch	Ranch	Domestic - Single Family	NO	NE	NO	
	2643 S Quitman St	1956	Contemporary	Split-Level	Domestic - Single Family	NO	NE	NO	
	2644 S Raleigh St	1956	Other	Other	Domestic - Single Family	NO	NE	YES	
	2645 S Raleigh St	1958	Ranch	Ranch	Domestic - Single Family	NO	NE	YES	
	2645 S Tennyson Way	1961	Ranch	Ranch	Domestic - Single Family	NO	NE	NO	
	2645 S Zurich Ct	1960	Other	Split-Level	Domestic - Single Family	NO	NE	NO	
	2646 S Perry St	1955	Contemporary	Ranch	Domestic - Single Family	NO	PD-NC	YES	Burns Modern Homes
	2646 S Sheridan Blvd	1960	Ranch	Ranch	Domestic - Single Family	NO	NE	NO	
	2646 S Stuart Way	1957	Ranch	Ranch	Domestic - Single Family	NO	NE	NO	
	2646 S Zurich Ct	1959	Ranch	Ranch	Domestic - Single Family	NO	NE	NO	
	2647 S Osceola St	1955	Ranch	Ranch	Domestic - Single Family	NO	NE	NO	
	2647 S Perry St	1956	Contemporary	Ranch	Domestic - Single Family	NO	PD-C	NO	Burns Modern Homes
	2647 S Stuart Way	1957	Ranch	Ranch	Domestic - Single Family	NO	NE	NO	
	2648 S Patton Ct	1955	Contemporary	Ranch	Domestic - Single Family	NO	PD-NC	YES	Burns Modern Homes
	2648 S Tennyson Way	1957	Ranch	Ranch	Domestic - Single Family	NO	NE	NO	
	2649 S Patton Ct	1955	Contemporary	Ranch	Domestic - Single Family	NO	PD-C	NO	Burns Modern Homes
	2649 S Tennyson Way	1961	Ranch	Ranch	Domestic - Single Family	NO	NE	NO	
5DV.11504	2650 S Perry St	1955	Contemporary	Ranch	Domestic - Single Family	NO	PD-C	NO	Burns Modern Homes

	2650 S Sheridan Blvd	1973	Ranch	Ranch	Domestic - Single Family	NO	NE	NO	
	2650 S Wolff Way	1961	Ranch	Ranch	Domestic - Single Family	NO	NE	NO	
	2651 S Perry St	1956	Contemporary	Ranch	Domestic - Single Family	NO	NE	YES	
	2651 S Zurich Ct	1960	Other	Other	Domestic - Single Family	NO	NE	NO	
	2652 S Quitman St	1956	Contemporary	Ranch	Domestic - Single Family	NO	NE	NO	
	2653 S Osceola St	1956	Ranch	Ranch	Domestic - Single Family	NO	NE	NO	
	2653 S Quitman St	1956	Contemporary	Split-Level	Domestic - Single Family	NO	NE	NO	
	2653 S Tennyson Way	1961	Ranch	Ranch	Domestic - Single Family	NO	NE	YES	
	2653 S Wolff Way	1959	Raised	Ranch	Domestic - Single Family	NO	NE	NO	
	2654 S Patton Ct	1955	Contemporary	Ranch	Domestic - Single Family	NO	PD-C	NO	Burns Modern Homes
	2654 S Raleigh St	1956	Contemporary	Split-Level	Domestic - Single Family	NO	NE	NO	
	2655 S Patton Ct	1955	Contemporary	Ranch	Domestic - Single Family	NO	PD-C	NO	Burns Modern Homes
	2655 S Raleigh St	1957	Ranch	Ranch	Domestic - Single Family	NO	NE	NO	
	2655 S Zurich Ct	1958	Ranch	Ranch	Domestic - Single Family	NO	NE	NO	
	2656 S Stuart Way	1957	Ranch	Ranch	Domestic - Single Family	NO	NE	NO	
	2657 S Osceola St	1956	Contemporary	Ranch	Domestic - Single Family	NO	PD-C	NO	Burns Modern Homes
	2657 S Stuart Way	1957	Ranch	Ranch	Domestic - Single Family	NO	NE	NO	
	2657 S Tennyson Way	1962	Ranch	Ranch	Domestic - Single Family	NO	NE	NO	
	2658 S Patton Ct	1955	Ranch	Ranch	Domestic - Single Family	NO	NE	NO	
	2658 S Tennyson Way	1957	Ranch	Ranch	Domestic - Single Family	NO	NE	YES	
	2659 S Patton Ct	1955	Contemporary	Ranch	Domestic - Single Family	NO	PD-C	NO	Burns Modern Homes
	2660 S Perry St	1955	Other	Other	Domestic - Single Family	NO	NE	NO	
	2660 S Sheridan Blvd	1961	Ranch	Ranch	Domestic - Single Family	NO	NE	NO	
	2660 S Wolff Way	1959	Other	Other	Domestic - Single Family	NO	NE	YES	
	2661 S Perry St	1956	Contemporary	Ranch	Domestic - Single Family	NO	PD-NC	YES	Burns Modern Homes
	2661 S Zurich Ct	1958	Ranch	Ranch	Domestic - Single Family	NO	NE	NO	
	2662 S Quitman St	1956	Contemporary	Ranch	Domestic - Single Family	NO	NE	NO	
	2662 S Wolff Way	1959	Ranch	Ranch	Domestic - Single Family	NO	NE	NO	
	2663 S Quitman St	1956	Contemporary	Split-Level	Domestic - Single Family	NO	NE	NO	

	2664 S Raleigh St	1956	Contemporary	Split-Level	Domestic - Single Family	NO	NE	NO	
	2664 S Zurich Ct	1959	Raised	Ranch	Domestic - Single Family	NO	NE	NO	
	2665 S Raleigh St	1957	Ranch	Ranch	Domestic - Single Family	NO	NE	NO	
	2665 S Winona Ct	1962	Ranch	Ranch	Domestic - Single Family	NO	NE	NO	
5DV.11509	2665 S Zurich Ct	1959	Ranch	Ranch	Domestic - Single Family	NO	NE	NO	
	2666 S Perry St	1955	Ranch	Ranch	Domestic - Single Family	NO	NE	YES	
	2666 S Stuart Way	1957	Ranch	Ranch	Domestic - Single Family	NO	NE	NO	
	2667 S Osceola St	1956	Contemporary	Ranch	Domestic - Single Family	NO	PD-C	NO	Burns Modern Homes
	2667 S Perry St	1956	Contemporary	Ranch	Domestic - Single Family	NO	PD-C	NO	Burns Modern Homes
	2667 S Stuart Way	1956	Contemporary	Ranch	Domestic - Single Family	NO	NE	NO	
	2668 S Patton Ct	1955	Ranch	Ranch	Domestic - Single Family	NO	NE	YES	
	2668 S Quitman St	1956	Contemporary	Ranch	Domestic - Single Family	NO	NE	YES	
	2669 S Patton Ct	1955	Contemporary	Ranch	Domestic - Single Family	NO	PD-C	NO	Burns Modern Homes
	2669 S Quitman St	1956	Contemporary	Split-Level	Domestic - Single Family	NO	NE	NO	
	2670 S Perry St	1955	Contemporary	Ranch	Domestic - Single Family	NO	PD-C	NO	Burns Modern Homes
	2670 S Raleigh St	1956	Contemporary	Split-Level	Domestic - Single Family	NO	NE	YES	
	2670 S Sheridan Blvd	1967	Modern Movement	Other	Commercial	NO	NE	NO	
	2670 S Winona Ct	1963	Ranch	Ranch	Domestic - Single Family	NO	NE	NO	
	2671 S Perry St	1956	Contemporary	Ranch	Domestic - Single Family	NO	PD-C	NO	Burns Modern Homes
	2671 S Zurich Ct	1958	Ranch	Ranch	Domestic - Single Family	NO	NE	NO	
	2672 S Quitman St	1956	Contemporary	Ranch	Domestic - Single Family	NO	NE	NO	
	2673 S Quitman St	1956	Contemporary	Ranch	Domestic - Single Family	NO	NE	NO	
	2674 S Patton Ct	1955	Contemporary	Ranch	Domestic - Single Family	NO	PD-C	NO	Burns Modern Homes
	2674 S Raleigh St	1956	Contemporary	Split-Level	Domestic - Single Family	NO	NE	NO	
	2674 S Zurich Ct	1958	Ranch	Ranch	Domestic - Single Family	NO	NE	NO	
	2675 S Patton Ct	1955	Other	Other	Domestic - Single Family	NO	NE	NO	
	2675 S Winona Ct	1961	Ranch	Ranch	Domestic - Single Family	NO	NE	NO	
	2675 S Zurich Ct	1958	Ranch	Ranch	Domestic - Single Family	NO	NE	NO	

	2676 S Stuart Way	1957	Ranch	Ranch	Domestic - Single Family	NO	NE	NO	
	2677 S Osceola St	1956	Contemporary	Ranch	Domestic - Single Family	NO	PD-C	NO	Burns Modern Homes
	2678 S Patton Ct	1955	Other	Other	Domestic - Single Family	NO	NE	NO	
	2679 S Patton Ct	1955	Contemporary	Ranch	Domestic - Single Family	NO	PD-C	NO	Burns Modern Homes
	2680 S Perry St	1955	Contemporary	Ranch	Domestic - Single Family	NO	PD-C	NO	Burns Modern Homes
	2680 S Sheridan Blvd	1978	Other	Other	Religious - Church	NO	NE	NO	
	2680 S Winona Ct	1965	Contemporary	Ranch	Domestic - Single Family	NO	NE	NO	
	2680 S Zurich Ct	1959	Ranch	Ranch	Domestic - Single Family	NO	NE	NO	
	2681 S Perry St	1956	Contemporary	Ranch	Domestic - Single Family	NO	PD-C	NO	Burns Modern Homes
	2681 S Zurich Ct	1958	Ranch	Ranch	Domestic - Single Family	NO	NE	NO	
	2682 S Quitman St	1956	Contemporary	Ranch	Domestic - Single Family	NO	NE	YES	
	2683 S Quitman St	1958	Contemporary	Ranch	Domestic - Single Family	NO	NE	NO	
	2684 S Raleigh St	1956	Contemporary	Split-Level	Domestic - Single Family	NO	NE	NO	
	2684 S Zurich Ct	1959	Ranch	Ranch	Domestic - Single Family	NO	NE	NO	
	2685 S Tennyson Way	1970	Ranch	Ranch	Domestic - Single Family	NO	NE	NO	
	2685 S Winona Ct	1961	Ranch	Ranch	Domestic - Single Family	NO	NE	NO	
	2685 S Zurich Ct	1961	Ranch	Ranch	Domestic - Single Family	NO	NE	NO	
	2686 S Perry St	1955	Other	Other	Domestic - Single Family	NO	NE	NO	
	2686 S Sheridan Blvd	1961	Other	Other	Domestic - Single Family	NO	NE	NO	
	2687 S Osceola St	1956	Contemporary	Ranch	Domestic - Single Family	NO	PD-C	NO	Burns Modern Homes
	2687 S Perry St	1956	Contemporary	Ranch	Domestic - Single Family	NO	PD-C	NO	Burns Modern Homes
	2688 S Patton Ct	1955	Contemporary	Ranch	Domestic - Single Family	NO	PD-NC	YES	Burns Modern Homes
	2689 S Patton Ct	1955	Contemporary	Ranch	Domestic - Single Family	NO	PD-C	NO	Burns Modern Homes
	2690 S Perry St	1955	Contemporary	Ranch	Domestic - Single Family	NO	PD-C	NO	Burns Modern Homes
	2690 S Sheridan Blvd	1961	Ranch	Ranch	Domestic - Single Family	NO	NE	NO	
	2690 S Winona Ct	1962	Other	Split-Level	Domestic - Single Family	NO	NE	NO	
	2690 S Zurich Ct	1961	Other	Split-Level	Domestic - Single Family	NO	NE	NO	

	2691 S Perry St	1956	Contemporary	Ranch	Domestic - Single Family	NO	PD-C	NO	Burns Modern Homes
	2691 S Zurich Ct	1959	Ranch	Ranch	Domestic - Single Family	NO	NE	NO	
	2692 S Quitman St	1956	Contemporary	Ranch	Domestic - Single Family	NO	NE	NO	
	2693 S Osceola St	1956	Contemporary	Ranch	Domestic - Single Family	NO	PD-C	NO	Burns Modern Homes
	2693 S Quitman St	1958	Ranch	Ranch	Domestic - Single Family	NO	NE	NO	
	2694 S Patton Ct	1955	Contemporary	Ranch	Domestic - Single Family	NO	PD-C	NO	Burns Modern Homes
	2694 S Raleigh St	1957	Ranch	Ranch	Domestic - Single Family	NO	NE	NO	
	2694 S Sheridan Blvd	1972	Ranch	Ranch	Domestic - Single Family	NO	NE	YES	
	2694 S Zurich Ct	1960	Ranch	Ranch	Domestic - Single Family	NO	NE	NO	
	2695 S Patton Ct	1955	Contemporary	Ranch	Domestic - Single Family	NO	PD-NC	YES	Burns Modern Homes
	2695 S Raleigh St	1970	Modern Movement	Other	Religious - Church	NO	NE	NO	
	2695 S Tennyson Way	1971	Ranch	Ranch	Domestic - Single Family	NO	NE	NO	
	2695 S Winona Ct	1971	Other	Split-Level	Domestic - Single Family	NO	NE	NO	
	2695 S Zurich Ct	1959	Ranch	Ranch	Domestic - Single Family	NO	NE	NO	
	2697 S Osceola St	1956	Ranch	Ranch	Domestic - Single Family	NO	NE	NO	
	2697 S Quitman St	1958	Ranch	Ranch	Domestic - Single Family	NO	NE	NO	
	2698 S Patton Ct	1955	Contemporary	Ranch	Domestic - Single Family	NO	PD-C	NO	Burns Modern Homes
	2698 S Quitman St	1956	Contemporary	Ranch	Domestic - Single Family	NO	NE	NO	
	2698 S Sheridan Blvd	1962	Ranch	Ranch	Domestic - Single Family	NO	NE	NO	
	2698 S Zurich Ct	1960	Raised	Ranch	Domestic - Single Family	NO	NE	NO	
	2699 S Patton Ct	1955	Contemporary	Ranch	Domestic - Single Family	NO	PD-C	NO	Burns Modern Homes
5DV.11501	2699 S Zurich Ct	1961	Contemporary	Ranch	Domestic - Single Family	NO	NE	NO	
	4100 W Harvard Ave	1957	Ranch	Ranch	Domestic - Single Family	NO	NE	NO	
	4105 W Vassar Ave	1957	Raised	Ranch	Domestic - Single Family	NO	NE	NO	
	4145 W Vassar Ave	1957	Ranch	Ranch	Domestic - Single Family	NO	NE	NO	
	4155 W Harvard Ave	1957	Ranch	Ranch	Domestic - Single Family	NO	NE	NO	
	4155 W Iliff Ave	1955	Ranch	Ranch	Domestic - Single Family	NO	NE	NO	
	4205 W Iliff Ave	1955	Ranch	Ranch	Domestic - Single Family	NO	NE	NO	

	4205 W Vassar Ave	1957	Ranch	Ranch	Domestic - Single Family	NO	NE	NO	
	4206 W Vassar Ave	1957	Ranch	Ranch	Domestic - Single Family	NO	NE	NO	
	4245 W Vassar Ave	1957	Ranch	Ranch	Domestic - Single Family	NO	NE	NO	
	4246 W Vassar Ave	1957	Ranch	Ranch	Domestic - Single Family	NO	NE	NO	
	4255 W Iliff Ave	1955	Ranch	Ranch	Domestic - Single Family	NO	NE	NO	
	4305 W Vassar Ave	1957	Ranch	Ranch	Domestic - Single Family	NO	NE	NO	
	4306 W Vassar Ave	1957	Ranch	Ranch	Domestic - Single Family	NO	NE	NO	
	4345 W Vassar Ave	1957	Ranch	Ranch	Domestic - Single Family	NO	NE	NO	
	4346 W Vassar Ave	1957	Ranch	Ranch	Domestic - Single Family	NO	NE	NO	
	4400 W Iliff Ave	1959	Ranch	Ranch	Domestic - Single Family	NO	NE	NO	
	4400 W Lakeridge Rd	1965	Other	Other	Domestic - Single Family	NO	NE	NO	
	4400 W Vassar Ave	1956	Raised	Ranch	Domestic - Single Family	NO	NE	NO	
	4400 W Warren Ave	1958	Ranch	Ranch	Domestic - Single Family	NO	NE	YES	
	4405 W Harvard Ave	1960	Ranch	Ranch	Domestic - Single Family	NO	NE	NO	
	4410 W Vassar Ave	1956	Raised	Ranch	Domestic - Single Family	NO	NE	NO	
	4420 W Vassar Ave	1956	Raised	Ranch	Domestic - Single Family	NO	NE	NO	
	4420 W Warren Ave	1958	Other	Split-Level	Domestic - Single Family	NO	NE	NO	
	4430 W Vassar Ave	1956	Raised	Ranch	Domestic - Single Family	NO	NE	NO	
	4440 W Vassar Ave	1956	Raised	Ranch	Domestic - Single Family	NO	NE	NO	
	4440 W Warren Ave	1962	Other	Split-Level	Domestic - Single Family	NO	NE	NO	
	4450 W Lakeridge Rd	1954	Ranch	Ranch	Domestic - Single Family	NO	NE	NO	
	4450 W Vassar Ave	1956	Raised	Ranch	Domestic - Single Family	NO	NE	NO	
	4455 W Harvard Ave	1959	Ranch	Ranch	Domestic - Single Family	NO	NE	NO	
	4460 W Lakeridge Rd	1968	Other	Other	Domestic - Single Family	NO	NE	YES	
	4460 W Vassar Ave	1956	Raised	Ranch	Domestic - Single Family	NO	NE	NO	
	4460 W Warren Ave	1958	Other	Split-Level	Domestic - Single Family	NO	NE	NO	
	4465 W Yale Ave	1971	Other	Bi-Level	Domestic - Single Family	NO	NE	NO	
	4470 W Lakeridge Rd	1961	Ranch	Ranch	Domestic - Single Family	NO	NE	NO	
	4470 W Vassar Ave	1956	Raised	Ranch	Domestic - Single Family	NO	NE	NO	
	4475 W Lakeridge Rd	1948	Other	Other	Domestic - Single Family	NO	NE	NO	
	4480 W Lakeridge Rd	1959	Ranch	Ranch	Domestic - Single Family	NO	NE	NO	
	4480 W Vassar Ave	1956	Raised	Ranch	Domestic - Single Family	NO	NE	NO	
	4485 W Lakeridge Rd	1961	Other	Other	Domestic - Single Family	NO	NE	NO	

	4490 W Lakeridge Rd	1976	Ranch	Ranch	Domestic - Single Family	NO	NE	NO	
	4490 W Vassar Ave	1956	Raised	Ranch	Domestic - Single Family	NO	NE	NO	
	4495 W Lakeridge Rd	1961	Other	Other	Domestic - Single Family	NO	NE	NO	
	4495 W Yale Ave	1971	Other	Bi-Level	Domestic - Single Family	NO	NE	NO	
	4500 W Iliff Ave	1956	Other	Split-Level	Domestic - Single Family	NO	NE	NO	
	4500 W Lakeridge Rd	1947	Ranch	Ranch	Domestic - Single Family	NO	NE	NO	
	4500 W Vassar Ave	1956	Raised	Ranch	Domestic - Single Family	NO	NE	NO	
	4500 W Warren Ave	1958	Other	Split-Level	Domestic - Single Family	NO	NE	NO	
	4501 W Lakeridge Rd	1948	Other	Other	Domestic - Single Family	NO	NE	NO	
	4501 W Yale Ave	1973	Other	Bi-Level	Domestic - Single Family	NO	NE	NO	
	4505 W Yale Ave	1961	Contemporary	Split-Level	Domestic - Single Family	NO	NE	NO	
	4510 W Lakeridge Rd	1965	Other	Other	Domestic - Single Family	NO	NE	NO	
	4520 W Vassar Ave	1956	Raised	Ranch	Domestic - Single Family	NO	NE	NO	
	4525 W Yale Ave	1960	Ranch	Ranch	Domestic - Single Family	NO	NE	NO	
	4530 W Warren Ave	1958	Other	Split-Level	Domestic - Single Family	NO	NE	YES	
	4535 W Lakeridge Rd	1960	Other	Other	Domestic - Single Family	NO	NE	NO	
	4540 W Vassar Ave	1956	Raised	Ranch	Domestic - Single Family	NO	NE	NO	
	4545 W Yale Ave	1960	Ranch	Ranch	Domestic - Single Family	NO	NE	NO	
	4550 W Iliff Ave	1956	Other	Split-Level	Domestic - Single Family	NO	NE	NO	
	4550 W Warren Ave	1958	Other	Split-Level	Domestic - Single Family	NO	NE	NO	
	4555 W Harvard Ave	1956	Ranch	Ranch	Domestic - Single Family	NO	NE	NO	
	4555 W Iliff Ave	1957	Ranch	Ranch	Domestic - Single Family	NO	NE	NO	
5DV.11502	4555 W Lakeridge Rd	1963	Modern Movement	A-Frame	Domestic - Single Family	NO	NE	NO	
	4560 W Evans Ave	1958	Ranch	Ranch	Domestic - Single Family	NO	NE	NO	
	4560 W Vassar Ave	1956	Raised	Ranch	Domestic - Single Family	NO	NE	NO	
	4565 W Yale Ave	1960	Ranch	Ranch	Domestic - Single Family	NO	NE	NO	
	4575 W Lakeridge Rd	1948	Other	Other	Domestic - Single Family	NO	NE	NO	
	4580 W Vassar Ave	1956	Raised	Ranch	Domestic - Single Family	NO	NE	NO	
	4585 W Yale Ave	1961	Ranch	Ranch	Domestic - Single Family	NO	NE	NO	
	4595 W Lakeridge Rd	1968	Ranch	Ranch	Domestic - Single Family	NO	NE	NO	
	4595 W Yale Ave	1963	Ranch	Ranch	Domestic - Single Family	NO	NE	NO	
	4600 W Evans Ave	1957	Ranch	Ranch	Domestic - Single Family	NO	NE	NO	

	4600 W Lakeridge Rd	1961	Ranch	Ranch	Domestic - Single Family	NO	NE	NO	
	4600 W Vassar Ave	1956	Raised	Ranch	Domestic - Single Family	NO	NE	NO	
	4605 W Lakeridge Rd	1961	Other	Other	Domestic - Single Family	NO	NE	NO	
	4620 W Vassar Ave	1956	Raised	Ranch	Domestic - Single Family	NO	NE	NO	
	4630 W Evans Ave	1956	Other	Other	Domestic - Single Family	NO	NE	NO	
	4640 W Vassar Ave	1956	Raised	Ranch	Domestic - Single Family	NO	NE	NO	
	4660 W Evans Ave	1955	Ranch	Ranch	Domestic - Single Family	NO	NE	NO	
	4660 W Vassar Ave	1956	Raised	Ranch	Domestic - Single Family	NO	NE	NO	
	4680 W Vassar Ave	1956	Raised	Ranch	Domestic - Single Family	NO	NE	NO	
	4690 W Evans Ave	1957	Other	Other	Domestic - Single Family	NO	NE	NO	
	4700 W Evans Ave	1956	Other	Other	Domestic - Single Family	NO	NE	YES	
	4700 W Lakeridge Rd	1968	Other	Other	Domestic - Single Family	NO	NE	NO	
	4700 W Vassar Ave	1956	Raised	Ranch	Domestic - Single Family	NO	NE	NO	
	4705 W Lakeridge Rd	1961	Other	Other	Domestic - Single Family	NO	NE	NO	
	4711 W Yale Ave	1964	Other	Bi-Level	Domestic - Single Family	NO	NE	NO	
	4721 W Yale Ave	1968	Other	Bi-Level	Domestic - Single Family	NO	NE	NO	
	4730 W Evans Ave	1957	Ranch	Ranch	Domestic - Single Family	NO	NE	NO	
	4730 W Vassar Ave	1956	Raised	Ranch	Domestic - Single Family	NO	NE	NO	
	4731 W Yale Ave	1964	Other	Bi-Level	Domestic - Single Family	NO	NE	NO	
	4750 W Lakeridge Rd	1966	Other	Other	Domestic - Single Family	NO	NE	NO	
	4755 W Lakeridge Rd	1962	Other	Other	Domestic - Single Family	NO	NE	NO	
	4760 W Evans Ave	1956	Ranch	Ranch	Domestic - Single Family	NO	NE	NO	
	4760 W Vassar Ave	1956	Raised	Ranch	Domestic - Single Family	NO	NE	NO	
	4790 W Evans Ave	1957	Other	Other	Domestic - Single Family	NO	NE	NO	
	4790 W Lakeridge Rd	1948	Other	Other	Domestic - Single Family	NO	NE	NO	
	4790 W Vassar Ave	1956	Raised	Ranch	Domestic - Single Family	NO	NE	NO	
	4800 W Evans Ave	1958	Ranch	Ranch	Domestic - Single Family	NO	NE	NO	
	4800 W Lakeridge Rd	1960	Ranch	Ranch	Domestic - Single Family	NO	NE	NO	
	4800 W Vassar Ave	1956	Raised	Ranch	Domestic - Single Family	NO	NE	NO	
	4800 W Warren Ave	1955	Raised	Ranch	Domestic - Single Family	NO	NE	NO	
	4801 W Yale Ave	1966	Other	Other	Domestic - Single Family	NO	NE	NO	
	4805 W Lakeridge Rd	1961	Ranch	Ranch	Domestic - Single Family	NO	NE	NO	
	4820 W Warren Ave	1955	Raised	Ranch	Domestic - Single Family	NO	NE	NO	

	4830 W Evans Ave	1957	Ranch	Ranch	Domestic - Single Family	NO	NE	NO	
	4830 W Vassar Ave	1956	Raised	Ranch	Domestic - Single Family	NO	NE	NO	
	4840 W Warren Ave	1955	Other	Split-Level	Domestic - Single Family	NO	NE	NO	
	4855 W Lakeridge Rd	1959	Raised	Ranch	Domestic - Single Family	NO	NE	NO	
	4855 W Yale Ave	1965	Other	Other	Domestic - Single Family	NO	NE	NO	
	4860 W Vassar Ave	1956	Raised	Ranch	Domestic - Single Family	NO	NE	NO	
	4860 W Warren Ave	1955	Raised	Ranch	Domestic - Single Family	NO	NE	NO	
	4880 W Warren Ave	1955	Raised	Ranch	Domestic - Single Family	NO	NE	NO	
	4890 W Vassar Ave	1956	Raised	Ranch	Domestic - Single Family	NO	NE	NO	
	4900 W Lakeridge Rd	1960	Raised	Ranch	Domestic - Single Family	NO	NE	NO	
	4900 W Vassar Ave	1956	Raised	Ranch	Domestic - Single Family	NO	NE	NO	
	4905 W Lakeridge Rd	1960	Ranch	Ranch	Domestic - Single Family	NO	NE	NO	
	4905 W Yale Ave	1966	Other	Other	Domestic - Single Family	NO	NE	NO	
	4907 W Yale Ave	1967	Other	Other	Domestic - Single Family	NO	NE	NO	
	4920 W Vassar Ave	1956	Raised	Ranch	Domestic - Single Family	NO	NE	NO	
	4935 W Lakeridge Rd	1961	Ranch	Ranch	Domestic - Single Family	NO	NE	NO	
	4940 W Vassar Ave	1956	Raised	Ranch	Domestic - Single Family	NO	NE	NO	
	4950 W Lakeridge Rd	1961	Other	Split-Level	Domestic - Single Family	NO	NE	NO	
	4960 W Vassar Ave	1956	Raised	Ranch	Domestic - Single Family	NO	NE	NO	
	4965 W Lakeridge Rd	1960	Ranch	Ranch	Domestic - Single Family	NO	NE	NO	
	4965 W Yale Ave	1968	Other	Other	Domestic - Single Family	NO	NE	NO	
	4980 W Vassar Ave	1956	Raised	Ranch	Domestic - Single Family	NO	NE	NO	
	5000 W Lakeridge Rd	1960	Ranch	Ranch	Domestic - Single Family	NO	NE	NO	
	5000 W Vassar Ave	1956	Raised	Ranch	Domestic - Single Family	NO	NE	NO	
	5005 W Lakeridge Rd	1959	Ranch	Ranch	Domestic - Single Family	NO	NE	NO	
	5005 W Yale Ave	1960	Other	Bi-Level	Domestic - Single Family	NO	NE	NO	
	5020 W Vassar Ave	1956	Raised	Ranch	Domestic - Single Family	NO	NE	NO	
	5040 W Vassar Ave	1956	Raised	Ranch	Domestic - Single Family	NO	NE	NO	
	5045 W Yale Ave	1961	Other	Other	Domestic - Single Family	NO	NE	NO	
	5055 W Lakeridge Rd	1959	Ranch	Ranch	Domestic - Single Family	NO	NE	NO	
	5060 W Vassar Ave	1956	Raised	Ranch	Domestic - Single Family	NO	NE	NO	
	5075 W Yale Ave	1961	Other	Other	Domestic - Single Family	NO	NE	NO	
	5080 W Vassar Ave	1968	Raised	Ranch	Domestic - Single Family	NO	NE	NO	

	5100 W Evans Ave	1969	Other	Other	Religious - Church	NO	NE	NO	
	5100 W Harvey Pl	1955	Other	Split-Level	Domestic - Single Family	NO	NE	NO	
	5105 W Lakeridge Rd	1960	Ranch	Ranch	Domestic - Single Family	NO	NE	NO	
	5105 W Warren Ave	1955	Other	Split-Level	Domestic - Single Family	NO	NE	YES	
	5105 W Yale Ave	1960	Other	Other	Domestic - Single Family	NO	NE	NO	
	5115 W Warren Ave	1955	Raised	Ranch	Domestic - Single Family	NO	NE	NO	
	5120 W Harvey Pl	1955	Raised	Ranch	Domestic - Single Family	NO	NE	NO	
	5125 W Lakeridge Rd	1959	Ranch	Ranch	Domestic - Single Family	NO	NE	NO	
	5135 W Warren Ave	1955	Other	Split-Level	Domestic - Single Family	NO	NE	NO	
	5140 W Harvey Pl	1955	Raised	Ranch	Domestic - Single Family	NO	NE	NO	
	5145 W Lakeridge Rd	1960	Ranch	Ranch	Domestic - Single Family	NO	NE	NO	
	5155 W Warren Ave	1955	Raised	Ranch	Domestic - Single Family	NO	NE	NO	
	5160 W Harvey Pl	1955	Raised	Ranch	Domestic - Single Family	NO	NE	NO	
	5165 W Lakeridge Rd	1962	Ranch	Ranch	Domestic - Single Family	NO	NE	NO	
	5175 W Warren Ave	1955	Raised	Ranch	Domestic - Single Family	NO	NE	NO	
	5175 W Yale Ave	1962	Other	Split-Level	Domestic - Single Family	NO	NE	NO	
	5180 W Harvey Pl	1955	Raised	Ranch	Domestic - Single Family	NO	NE	NO	
	5190 W Lakeridge Rd	1961	Other	Split-Level	Domestic - Single Family	NO	NE	NO	
	5195 W Warren Ave	1955	Other	Split-Level	Domestic - Single Family	NO	NE	NO	